



TANK MAGNETS

Vescor Tank Magnets Pay Off For You because they pick-up material that ordinary filters miss. Tank Magnets help maintain clean oil. The cleaner the oil can be kept in your reservoirs, the less your troubles will be and the greater your savings will be.

REGULAR TANK MAGNETS – This Heavy Duty model uses 5/8" solid steel rod, furnished with a 5" support rod. However, these support rods can be ordered any length desired, either shorter or longer than 5" to suit the reservoir. Heavy Duty comes with the end threaded 5/8"-18 NF. The support rod can also be furnished with special threads or with special means of attachment brazed on. Pipe plugs are optional and are furnished in 2 1/2" NPT size. When a Tank-Magnet is ordered with a pipe plug, the unit is shipped assembled so all that is required is to unwrap it and screw it into position. The recommended opening that will accommodate the unit is a 2 1/2" pipe flange or a hole approximately 2 1/4" in diameter. If desired, it can be installed in the cover of any opening larger than this.

Construction – The magnetic unit of the Vescor® Tank Magnet is exceptionally efficient. Each section is composed of a larger doughnut shaped ceramic magnet and two disc shaped pole pieces. This unique design adds the area of the discs to the area of the magnets to give the greatest amount of magnetic surface possible. This design also permits the hydraulic fluid to flow in and around the magnets and discs, thus allowing the oil to come in intimate contact with the magnets and discs to facilitate the removal of ferrous particles.

SLIM LINE TANK MAGNETS consists of Alnico V Magnets encased in a non-magnetic tube with the major difference between it and regular tank magnet being that it is only 3/8" in diameter. This means that it can be put through a hole tapped for 3/4" pipe plug and can be used where mounting space is a premium. Slim Line Tank Magnets come in two types, the **Slim Line** and **Extra Sturdy Slim Line**, with standard aluminum or optional stainless steel housings. The aluminum housing series are numbered SL-11, etc. for the Slim Lines and SLX-11, etc. for the Extra Sturdy lines. To designate the stainless steel housing units, SS is added after the appropriate catalog number, i.e., SLX-13 SS.

Construction – Magnetic units - Basically the same for all types of Slim Lines, the magnetic units vary only in length. **Support rods** - All Slim Lines are normally furnished with a 5" long support rod, but can be furnished with any length, either longer or shorter than the standard 5" length. **Housing** - Slim Lines come with aluminum housing for use with ordinary hydraulic fluids. For use where conditions might cause problems such as water glycols or phosphate esters, a stainless steel housing is provided. **Mounting** - Pipe plugs for mounting in the reservoir top are optional and are furnished in any size from 3/4" NPT to 3" NPT, with a 1 1/4" NPT or larger being recommended. Units come completely assembled and ready for installation.

Application – For greatest protection - Use a size such, that the magnetic unit extends from 1" off the floor of the reservoir to the top of the oil level.

For lowest cost - Use a standard unit of any series for all sizes of reservoirs. Position it 1" from the bottom of the reservoir with proper length support rod.

No maintenance is needed except for periodic cleaning, with cleaning once a month recommended. To clean, remove from the reservoir, wipe with a clean cloth and reinstall.

WHICH ONE SHOULD I USE?

STANDARD

When . . .

- The support rod is short
- The magnetic unit is small
- Normal use can be expected
- Cost is important

HEAVY DUTY

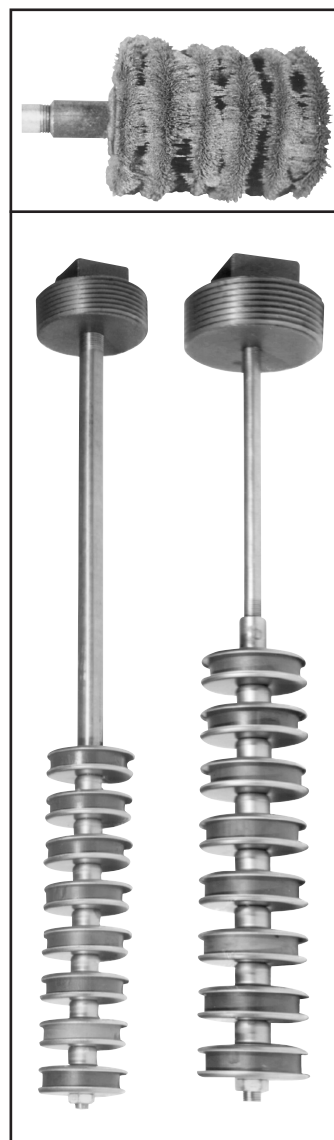
When . . .

- The support rod is long
- The magnetic unit is large
- Abuse in shipping or operation is expected
- A little more can be spent

CLEANING

Cleaning a Tank Magnet couldn't be easier. An ordinary air hose using shop compressed air does the job in seconds.

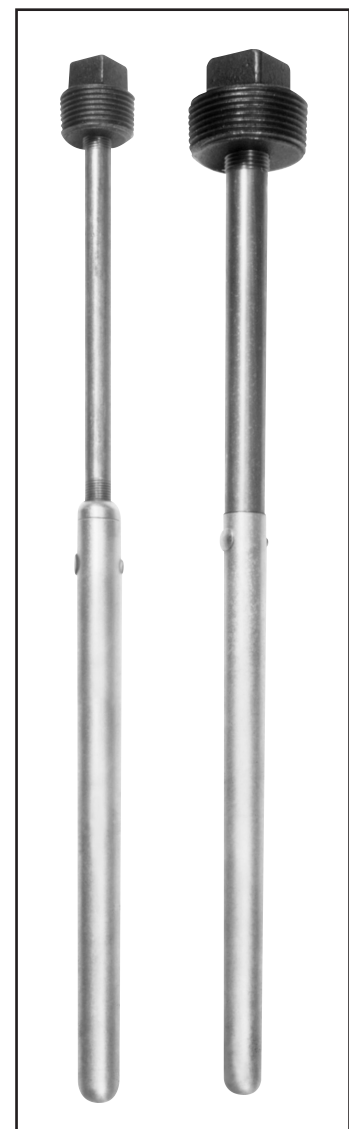
STANDARD MAGNETS



Cat. No. HDM-13
with 9" support rod
and 2 1/2" pipe plug
HEAVY DUTY

Cat. No. TM-14
with 5" support rod
and 2 1/2" pipe plug
STANDARD

SLIM LINE MAGNETS



Cat. No. SL-18-5
With 5" support rod
and 1 1/4" pipe plug
STANDARD

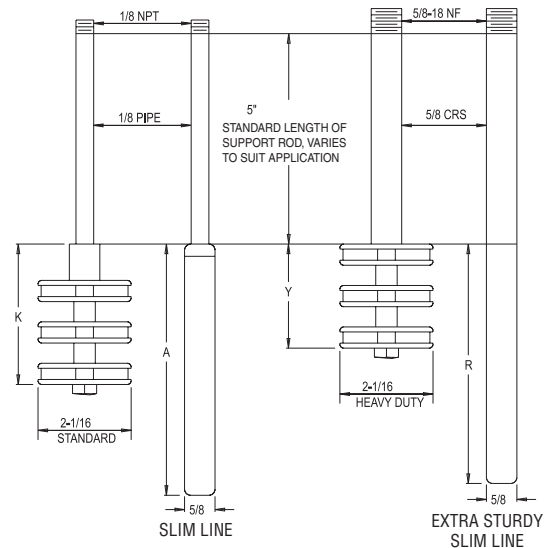
Cat. No. SLX-18
With 5" support rod
and 1 1/4" pipe plug
HEAVY DUTY



TANK MAGNETS

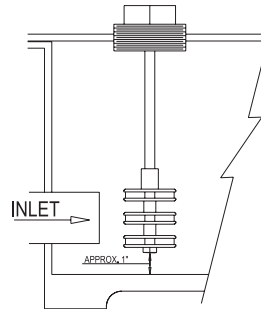
STANDARD / HEAVY DUTY

Reservoir Capacity (gallons)	Standard		Heavy Duty		No. of Magnets
	Part No.	K Dimension	Part No.	Y Dimension	
0-10	TM- 6	1 ⁵ / ₈ "	HDM- 6	7 ⁷ / ₈ "	1
10-30	TM- 7	2 ¹ / ₁₆ "	HDM- 7	1 ¹⁵ / ₁₆ "	2
30-60	TM- 9	3 ³ / ₄ "	HDM- 8	3"	3
60-100	TM-10	4 ¹³ / ₁₆ "	HDM- 9	4 ¹ / ₁₆ "	4
100-150	TM-11	5 ⁷ / ₈ "	HDM-10	5 ¹ / ₈ "	5
150-210	TM-12	6 ¹⁵ / ₁₆ "	HDM-11	6 ³ / ₁₆ "	6
210-280	TM-13	8"	HDM-12	7 ¹ / ₄ "	7
280-350	TM-14	9 ¹ / ₁₆ "	HDM-13	8 ⁵ / ₁₆ "	8



SLIM LINE / EXTRA STURDY SLIM LINE

Slim Line		Extra Sturdy Slim Line	
Part No.	A Dimension	Catalog No.	R Dimension
SL-11	6"	SLX-11	5 ³ / ₄ "
SL-13.5	8 ¹ / ₂ "	SLX-13	8 ¹ / ₄ "
SL-16	11"	SLX-16	10 ³ / ₄ "
SL-18.5	13 ¹ / ₂ "	SLX-18	13 ¹ / ₄ "
SL-21	16"	SLX-21	15 ³ / ₄ "
SL-23.5	18 ¹ / ₂ "	SLX-23	18 ¹ / ₄ "
SL-26	21"	SLX-26	20 ³ / ₄ "
SL-28.5	23 ¹ / ₂ "	SLX-28	23 ¹ / ₄ "
SL-31	26"	SLX-31	25 ³ / ₄ "

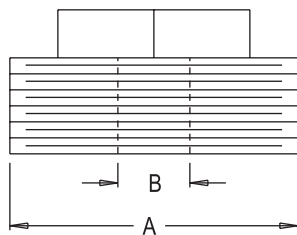


WHEN ORDERING BE SURE TO:

- List number of the magnetic unit
- Give part number of plug (if plug is desired)
- Give length of support rod (if other than standard 5")
- Add SS to unit number if stainless steel housings are desired

Our experienced design engineers are available to give you quick and efficient help on any problems you may have with magnetic applications or with special designs.

Pipe Plugs for Tank Magnets

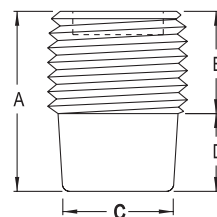


Vescor Part Number	Dimensions		Use with Magnet
	A NPT	B Thread	
PM-125	1 ¹ / ₄ " NPT	1 ¹ / ₈ " NPT	SL Series
PM-125X	1 ¹ / ₄ " NPT	5 ⁸ / ₁₆ -18NF	SLX Series
PM-250	2 ¹ / ₂ " NPT	1 ¹ / ₈ " NPT	TM Series
PM-250HD	2 ¹ / ₂ " NPT	5 ⁸ / ₁₆ -18NF	HDM Series

Square Head Magnetic Plugs

Vescor Magnetic Drain Plugs attract and hold abrasive, ferrous metal particles preventing their circulation through hydraulic system. By holding these particles Vescor Magnetic Plugs prevent excessive wear to a hydraulic systems components.

Vescor Part Number	Nominal Pipe Size	Dimensions				Body Material
		A	B	C	D	
4044041	1/2" NPTF	.96	.57	.56	.38	Steel
4054121	3/4" NPTF	1.11	.62	.62	.45	Steel



Specifications:

- Steel Body Material
- Permanent magnet fastened to plug body
- Ceramic magnet
- Readily available from stock