



ELECTRIC MOTOR INFORMATION

Dimensions for AC Motors

(Based on Nema MG1-11.01)

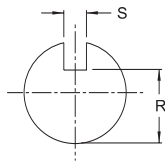
“C” Face Polyphase 60 Hertz Electric Motors

System for Designating Frames

HP	RPM	T Frame	U Frame	HP	RPM	T Frame	U Frame
1/4	1200	56C		20	1200	286T	326U
	1800	56C			1800	254T	286U
	3600	56C			3600	254T	286U
1/3	1200	56C		25	1200	324T	364U
	1800	56C			1800	284T	324U
	3600	56C			3600	256TS	324U
1/2	1200	56C		30	1200	326T	365U
	1800	56C			1800	286T	326U
	3600	56C			3600	286TS	326US
3/4	1200	56C		40	1200	364T	404U
	1800	56C			1800	324T	364U
	3600	56C			3600	324TS	364US
1	1200	145T	184U	50	1200	365T	405U
	1800	56C/143T	182U		1800	326T	365U
	3600	56C			3600	326TS	365US
1 1/2	1200	182T	184U	60	1200	404T	444U
	1800	56C/145T	184U		1800	364TS	405US
	3600	143T	184U		3600	364TS	405US
2	1200	184T	213U	75	1200	405T	445U
	1800	145T	184U		1800	365TS	444US
	3600	145T	184U		3600	365TS	444US
3	1200	213T	215U	100	1200	444T	445US
	1800	182T	213U		1800	405TS	445US
	3600	145T	184U		3600	405TS	445US
5	1200	215T	254U	125	1200	445T	
	1800	184T	215U		1800	444TS	
	3600	182T	213U		3600	444TS	
7 1/2	1200	254T	256U	150	1200	445T	
	1800	213T	254U		1800	445T	
	3600	184T	215U		3600	445T	
10	1200	256T	284U	200*	1200	445TS	
	1800	215T	256U		1800	445TS	
	3600	213T	254U		3600	445TS	
15	1200	284T	324U				
	1800	254T	284U				

*Open Drip Proof

KEYWAY DETAIL



NEMA KEYSEAT DIMENSIONS

NEMA SHAFT DIA.	KEYSEAT DIMENSIONS (R)		NEMA SHAFT (U)	KEYSEAT DIMENSIONS (S)	
	(R)	(S)		(R)	(S)
5/8	33/64	3/16	2 1/8	1 27/32	1/2
7/8	49/64	3/16	2 3/8	2 1/64	5/8
1 1/8	63/64	1/4	2 1/2	2 3/16	5/8
1 3/8	1 13/64	5/16	3 3/8	2 7/8	7/8
1 5/8	1 13/32	3/8	2 7/8	2 29/64	3/4
1 7/8	1 19/32	1/2			

Fractional-Horsepower Motors

The frame number for fractional-horsepower motors shall be the “D” dimension in inches multiplied by 16.

The letters C, G, H, J, K, M, N, Y and Z shall immediately follow the frame number to denote variations as follows:

- C** Face Mounting
- G** Gasoline Pump Motors
- H** Indicates a frame having an “F” dimension larger than that of the same frame without the suffix letter H (dimensional diagram must be obtained from the manufacturer)
- J** Jet pump motors
- K** Sump pump motors
- M** Oil burner motors
- N** Oil burner motors
- Y** Special mounting dimensions (dimensional diagram must be obtained from the manufacturer)
- Z** All mounting dimensions are standard except the shaft extension (dimensional diagram must be obtained from the manufacturer)

Integral-Horsepower Motors

The system for numbering the frames of integral-horsepower motors shall be as follows:

1. The first two digits of the frame number are equal to four times the “D” dimension in inches. When this product is not a whole number, the first two digits of the frame number shall be the next higher whole number
2. The third digit of the frame number is obtained from the value of 2F (see dimensions from manufacturer).

The letters A, C, CH, D, E, HP, HPH, JM, JP, LP, LPH, P, PH, R, S, T, U, V, VP, X, Y or Z shall immediately follow the frame number to denote variations as follows:

- A** Industrial direct-current motor or generator
- C** Face mounting on drive end
- CH** Face mounting dimensions are different from those for the frame designation having the suffix letter C. (The letters CH are to be considered as one suffix and should not be separated.)
- D** Flange mounting on drive end.
- E** Shaft extension dimensions for elevator motors in frames larger than the 326U frame
- S** Standard shaft for direct connection (see dimension tables)
- T** Included as part of a frame designation for which standard dimensions have been established (see dimension tables)
- U** Previously used as part of a frame designation for which standard dimensions had been established
- V** Vertical mounting only
- X** Wound-rotor crane motors with double shaft extension
- Y** Special mounting dimensions (dimensional diagram must be obtained from the manufacturer)
- Z** All mounting dimensions are standard except the shaft extension(s). Also used to designate motor with double shaft extension. (dimensional diagram must be obtained from the manufacturer)



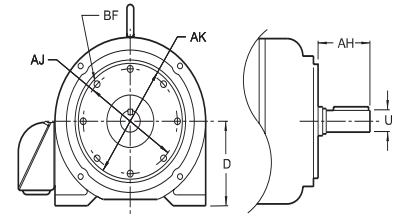
ELECTRIC MOTOR DIMENSIONS

Standard Nema "C" Face

"T" Frame Electric Motor Data

Chart 1

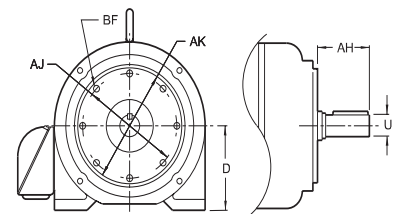
MOTOR	NEMA FRAMES	BOLT CIRCLE AJ	REGISTER AK	SHAFT DIAMETER U	SHAFT LENGTH AH	KEY SQ.	KEY LENGTH	BF (TAPPED HOLES)		D MAX
								SIZE	QTY	
	56C	5-7/8	4-1/2	5/8	2-1/16	3/16	1	3/8-16	4	3-1/2
	143TC	5-7/8	4-1/2	7/8	2-1/8	3/16	1-3/8	3/8-16	4	3-1/2
	145TC	5-7/8	4-1/2	7/8	2-1/8	3/16	1-3/8	3/8-16	4	3-1/2
	182TC	7-1/4	8-1/2	1-1/8	2-5/8	1/4	1-3/4	1/2-13	4	4-1/2
	184TC	7-1/4	8-1/2	1-1/8	2-5/8	1/4	1-3/4	1/2-13	4	4-1/2
	213TC	7-1/4	8-1/2	1-3/8	3-1/8	5/16	2-3/8	1/2-13	4	5-1/4
	215TC	7-1/4	8-1/2	1-3/8	3-1/8	5/16	2-3/8	1/2-13	4	5-1/4
	254TC	7-1/4	8-1/2	1-5/8	3-3/4	3/8	2-7/8	1/2-13	4	6-1/4
	256TC	7-1/4	8-1/2	1-5/8	3-3/4	3/8	2-7/8	1/2-13	4	6-1/4
284TSC	284TC	9	10-1/2	1-7/8	4-3/8	1/2	3-1/4	1/2-13	4	7
		9	10-1/2	1-5/8	3	3/8	1-7/8	1/2-13	4	7
	286TC	9	10-1/2	1-7/8	4-3/8	1/2	3-1/4	1/2-13	4	7
286TSC		9	10-1/2	1-5/8	3	3/8	1-7/8	1/2-13	4	7
		9	10-1/2	1-5/8	3	3/8	1-7/8	1/2-13	4	7
324TSC	324TC	11	12-1/2	2-1/8	5	1/2	3-7/8	5/8-11	4	8
		11	12-1/2	1-7/8	3-1/2	1/2	2	5/8-11	4	8
	326TC	11	12-1/2	2-1/8	5	1/2	3-7/8	5/8-11	4	8
326TSC		11	12-1/2	1-7/8	3-1/2	1/2	2	5/8-11	4	8
		11	12-1/2	1-7/8	3-1/2	1/2	2	5/8-11	4	8
		11	12-1/2	1-7/8	3-1/2	1/2	2	5/8-11	4	8
364TSC	364TC	11	12-1/2	2-3/8	5-5/8	5/8	4-1/4	5/8-11	8	9
		11	12-1/2	1-7/8	3-1/2	1/2	2	5/8-11	8	9
	365TC	11	12-1/2	2-3/8	5-5/8	5/8	4-1/4	5/8-11	8	9
365TSC		11	12-1/2	1-7/8	3-1/2	1/2	2	5/8-11	8	9
		11	12-1/2	1-7/8	3-1/2	1/2	2	5/8-11	8	9
		11	12-1/2	1-7/8	3-1/2	1/2	2	5/8-11	8	9
404TSC	404TC	11	12-1/2	2-7/8	7	3/4	5-5/8	5/8-11	8	10
		11	12-1/2	2-1/8	4	1/2	2-3/4	5/8-11	8	10
	405TC	11	12-1/2	2-7/8	7	3/4	5-5/8	5/8-11	8	10
405TSC		11	12-1/2	2-1/8	4	1/2	2-3/4	5/8-11	8	10
		11	12-1/2	2-1/8	4	1/2	2-3/4	5/8-11	8	10
		11	12-1/2	2-1/8	4	1/2	2-3/4	5/8-11	8	10
444TSC	444TC	14	16	3-3/8	8-1/4	7/8	7	5/8-11	8	11
		14	16	2-3/8	4-1/2	5/8	3	5/8-11	8	11
	445TC	14	16	3-3/8	8-1/4	7/8	7	5/8-11	8	11
445TSC		14	16	2-3/8	4-1/2	5/8	3	5/8-11	8	11
		14	16	2-3/8	4-1/2	5/8	3	5/8-11	8	11
		14	16	2-3/8	4-1/2	5/8	3	5/8-11	8	11
447TSC	447TC	14	16	3-3/8	8-1/4	7/8	7	5/8-11	8	11
		14	16	2-3/8	4-1/2	5/8	3	5/8-11	8	11
	449TC	14	16	3-3/8	8-1/4	7/8	7	5/8-11	8	11
449TSC		14	16	2-3/8	4-1/2	5/8	3	5/8-11	8	11
		14	16	2-3/8	4-1/2	5/8	3	5/8-11	8	11
		14	16	2-3/8	4-1/2	5/8	3	5/8-11	8	11



"U" Frame Electric Motor Data

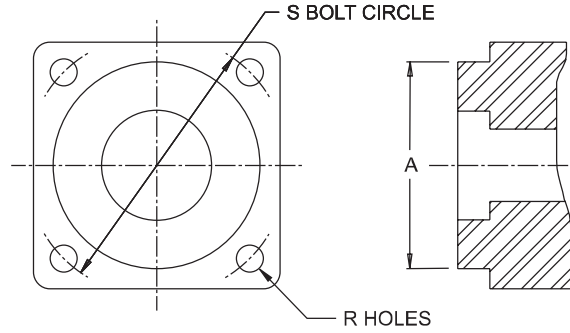
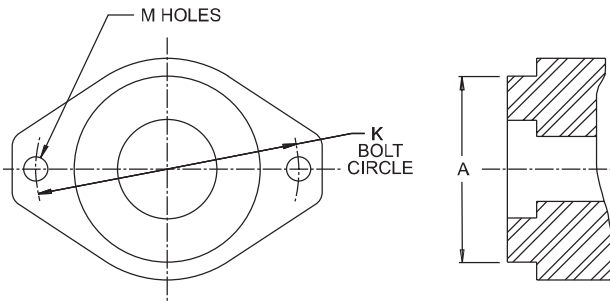
Chart 2

MOTOR	NEMA FRAMES	BOLT CIRCLE AJ	REGISTER AK	SHAFT DIAMETER U	SHAFT LENGTH AH	KEY SQ.	KEY LENGTH	BF (TAPPED HOLES)		D MAX
								SIZE	QTY	
	182UC	5-7/8	4-1/2	7/8	2-1/8	3/16	1-3/8	3/8-16	4	4-1/2
	184UC	5-7/8	4-1/2	7/8	2-1/8	3/16	1-3/8	3/8-16	4	4-1/2
	213UC	7-1/4	8-1/2	1-1/8	2-3/4	1/4	1-7/8	1/2-13	4	5-1/4
	215UC	7-1/4	8-1/2	1-1/8	2-3/4	1/4	1-7/8	1/2-13	4	5-1/4
	254UC	7-1/4	8-1/2	1-3/8	3-1/2	5/16	2-3/4	1/2-13	4	6-1/4
	256UC	7-1/4	8-1/2	1-3/8	3-1/2	5/16	2-3/4	1/2-13	4	6-1/4
284UC		9	10-1/2	1-5/8	4-5/8	3/8	3-3/4	1/2-13	4	7
	286UC	9	10-1/2	1-5/8	4-5/8	3/8	3-3/4	1/2-13	4	7
324USC	324UC	11	12-1/2	1-7/8	5-3/8	1/2	4-1/4	5/8-11	4	8
		11	12-1/2	1-5/8	3	3/8	1-7/8	5/8-11	4	8
326USC	326UC	11	12-1/2	1-7/8	5-3/8	1/2	4-1/4	5/8-11	4	8
		11	12-1/2	1-5/8	3	3/8	1-7/8	5/8-11	4	8
364USC	364UC	11	12-1/2	2-1/8	6-1/8	1/2	5	5/8-11	8	9
		11	12-1/2	1-7/8	3-1/2	1/2	2	5/8-11	8	9
365USC	365UC	11	12-1/2	2-1/8	6-1/8	1/2	5	5/8-11	8	9
		11	12-1/2	1-7/8	3-1/2	1/2	2	5/8-11	8	9
404USC	404UC	11	12-1/2	2-3/8	6-7/8	5/8	5-1/2	5/8-11	8	10
		11	12-1/2	2-1/8	4	1/2	2-3/4	5/8-11	8	10
405USC	405UC	11	12-1/2	2-3/8	6-7/8	5/8	5-1/2	5/8-11	8	10
		11	12-1/2	2-1/8	4	1/2	2-3/4	5/8-11	8	10
444USC	444UC	14	16	2-7/8	8-3/8	3/4	7	5/8-11	8	11
		14	16	2-1/8	4	1/2	2-3/4	5/8-11	8	11
	445UC	14	16	2-7/8	8-3/8	3/4	7	5/8-11	8	11
445USC		14	16	2-1/8	4	1/2	2-3/4	5/8-11	8	11
		14	16	2-1/8	4	1/2	2-3/4	5/8-11	8	11





PUMP MOUNTING FLANGE INFORMATION

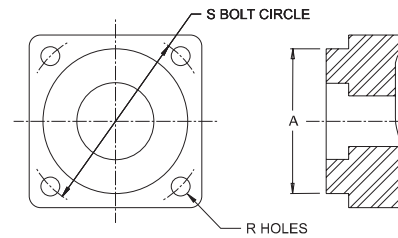
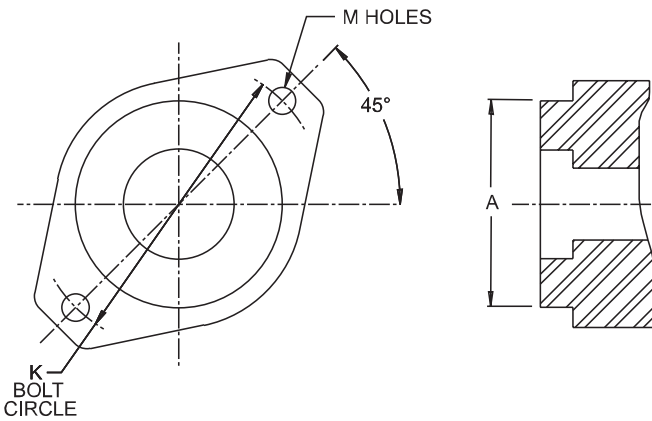


SAE 2 Bolt Mounting Flanges

Mounting Flange			Pilot Dimensions		Flange Dimensions	
ANSI	USA	SAE	A	K	M	
50-2	—	AA	2.000/1.998	3.255 3.245	0.406	
82-2	2F32	A	3.250/3.248	4.192 4.182	0.438	
101-2	2F40	B	4.000/3.998	5.755 5.745	0.562	
127-2	2F50	C	5.000/4.998	7.130 7.120	0.687	
152-2	2F60	D	6.000/5.998	9.005 8.995	0.812	
165-2	2F65	E	6.500/6.498	12.503 12.495	1.062	
177-2	2F70	F	7.000/6.998	13.786 13.776	1.062	

SAE 4 Bolt Mounting Flanges

Mounting Flange			Pilot Dimensions		Flange Dimensions	
ANSI	USA	SAE	A	S	R	
—	4F17	—	1.781/1.799	2.843 2.833	0.375	
101-4	4F40	B	4.000/3.998	5.005 4.995	0.562	
127-4	4F50	C	5.000/4.998	6.380 6.370	0.562	
152-4	4F60	D	6.000/5.998	9.005 8.995	0.812	
165-4	4F65	E	6.500/6.498	12.505 12.495	0.812	
177-4	4F70	F	7.000/6.998	13.786 13.776	1.062	

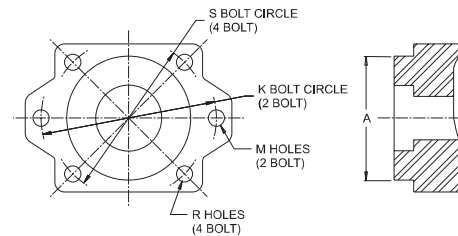


SAE 4 Bolt Mounting Flange (Modified)

Mounting Flange	Pilot Dimensions		Flange Dimensions	
	A	S	R	
4BM	4.000/3.998	5.005 4.995	0.438 0.433	

SAE 2 Bolt 45° Offset Mounting Flanges

Mounting Flange			Pilot Dimensions		Flange Dimensions	
ANSI	USA	SAE	A	K	M	
50-2 (45°)	—	SAE AA (45°)	2.000/1.998	3.255 3.245	0.406	
82-2 (45°)	2F32	SAE A (45°)	3.250/3.248	4.192 4.182	0.438	
101-2 (45°)	2F40	SAE B (45°)	4.000/3.998	5.755 5.745	0.562	
127-2 (45°)	2F50	SAE C (45°)	5.000/4.998	7.130 7.125	0.687	

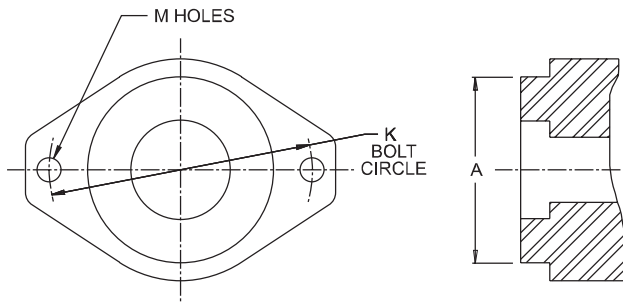


SAE 2 and 4 Bolt "B" with "A" Pilot

Mounting Flange	Pilot Dimensions	Flange Dimensions 2 Bolt		Flange Dimensions 4 Bolt	
	A	K	M	S	R
SAE BA	3.250/3.248	5.755 5.745	.562	5.005 4.995	.562

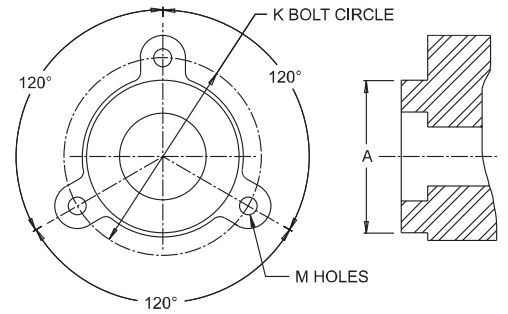


PUMP MOUNTING FLANGE INFORMATION



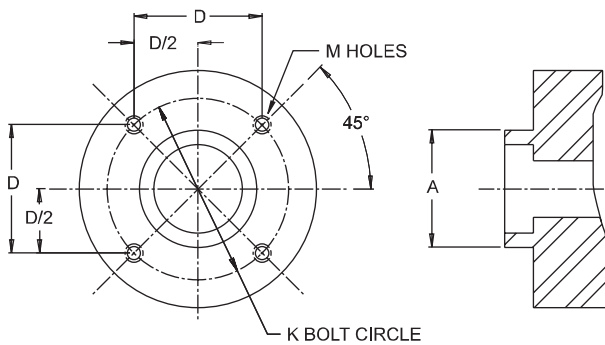
2 Bolt Special Mounting Flange

Mounting Flange	Pilot Dimensions	Flange Dimensions	
	A	K	M
2H	2.000/1.998	4.192 4.182	0.438



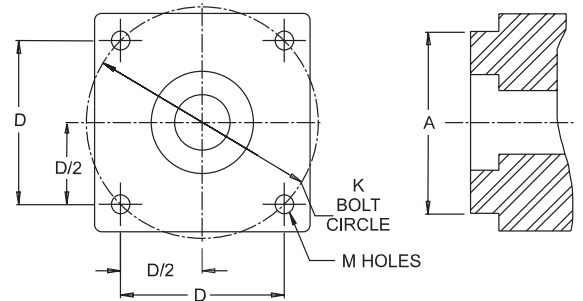
3 Bolt Mounting Flange

Mounting Flange	Pilot Dimensions	Flange Dimensions	
	A	K	M
3H	2.125/2.123	2.755 2.745	0.281



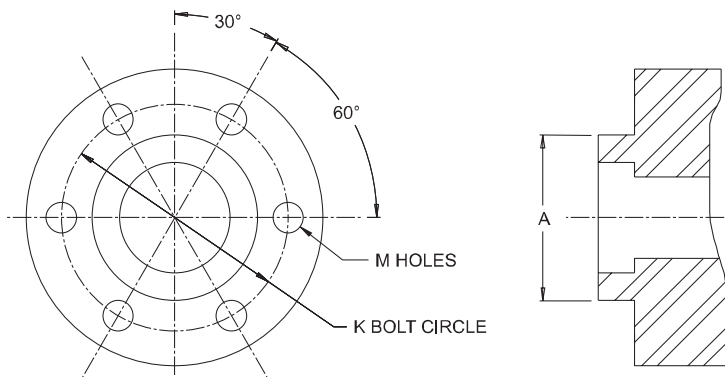
4 Bolt Round Mounting Flange

Mounting Flange	Pilot Dimensions	Flange Dimensions		
	A	D	M	K
4RB	1.627/1.625	1.727 1.717	1/4-20NC	2.435



4 Bolt Square Mounting Flanges

Mounting Flange	Pilot Dimensions	Flange Dimensions		
	A	D	M	K
4HC	3.750/3.748	6.005 5.995	0.687	8.485
4HNA	3.741/3.739	3.545 3.535	0.438	5.006
4HNB	5.315/5.313	4.895 4.875	0.531	6.901
4HV	3.749/3.747	3.541 3.531	0.438	5.000



6 Bolt Mounting Flanges

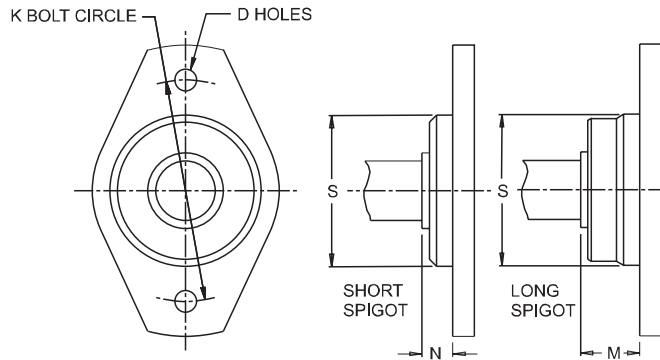
Mounting Flange	Pilot Dimensions	Flange Dimensions	
	A	K	M
6HA	2.625/2.623	3.255 3.245	3/8-16NC
6HB	2.625/2.623	3.255 3.245	0.438
6HC	2.247/2.246	2.879 2.869	3/8-16NC
6HD	2.999/2.998	4.755 4.745	3/8-16NC

NOTE: WITH VESCORS' POLICY OF CONSTANTLY IMPROVING ITS PRODUCTS, SPECIFICATIONS ARE SUBJECT TO CHANGE WITHOUT NOTICE.



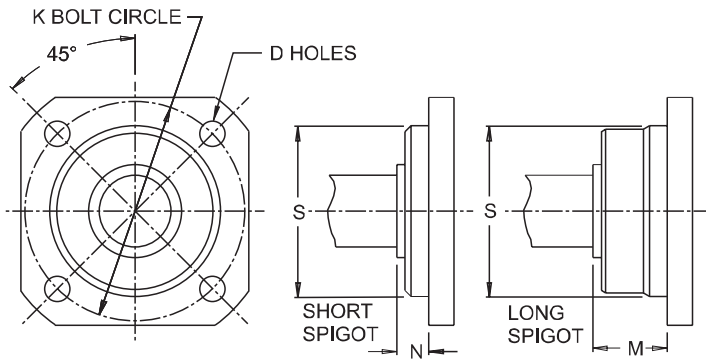
PUMP MOUNTING FLANGE INFORMATION

Metric 2-Bolt Mounting Flanges (Oval)



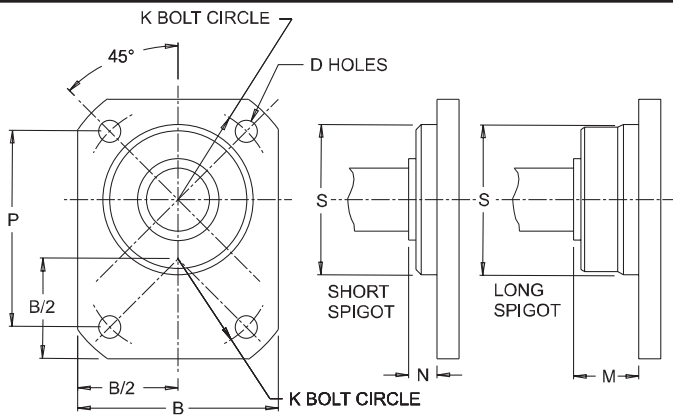
Mounting Flange	Metric Code	Spigot Dia.	Flange Dimensions (All Dimensions in mm)					Series
			S	K	D	M	N	
32	A2	32	56	6.6	16	8	PREF	
40	A2	40	63	6.6	16	8	PREF	
50	A2	50	80	9	20	8	PREF	
63	A2	63	100	9	20	8	PREF	
80	A2	80	109	11	20	8	PREF	
100	A2	100	140	14	25	10	PREF	
112	A2	112	160	14	25	10	NON-PREF	
125	A2	125	180	18	32	10	PREF	
140	A2	140	200	18	32	10	NON-PREF	
160	A2	160	224	22	40	10	PREF	
180	A2	180	250	22	40	10	NON-PREF	
200	A2	200	280	26	50	10	PREF	

Metric 4-Bolt Mounting Flanges (Square)



Mounting Flange	Metric Code	Spigot Dia.	Flange Dimensions (All Dimensions in mm)					Series
			S	K	D	M	N	
63	B4	63	85	9	20	8	PREF	
80	B4	80	103	9	20	8	PREF	
80	Non-Code	80	100	9	20	8	NON-PREF	
100	B4	100	125	11	25	10	PREF	
112	B4	112	140	11	25	10	NON-PREF	
125	B4	125	160	14	32	10	PREF	
140	B4	140	180	14	32	10	NON-PREF	
160	B4	160	200	18	40	10	PREF	
180	B4	180	224	18	40	10	NON-PREF	
200	B4	200	250	22	50	10	PREF	
224	B4	224	280	22	50	10	NON-PREF	
250	B4	250	315	26	50	10	PREF	

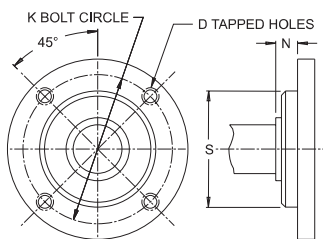
Metric 4-Bolt Mounting Flanges (Rectangular)



Mounting Flange	Metric Code	Spigot Dia.	Flange Dimensions (All Dimensions in mm)						Series
			S	K	P	B	D	M	
50	C4	50	68	72	62	6.6	20	8	PREF
63	C4	63	85	90	80	9	20	8	PREF
80	C4	80	103	109	100	9	20	8	PREF
100	C4	100	125	132	125	11	25	10	PREF
112	C4	112	140	148	132	11	25	10	NON-PREF
125	C4	125	160	170	150	14	32	10	PREF
140	C4	140	180	191	170	14	32	10	NON-PREF
160	C4	160	200	212	190	18	40	10	PREF
180	C4	180	224	265	212	18	40	10	NON-PREF
200	C4	200	250	265	236	22	50	10	PREF

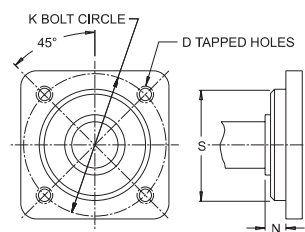
Metric 4-Bolt Mounting Flange (R4)

Mounting Flange	Metric Code	Spigot Dia.	Flange Dimensions (All Dimensions in mm)			
			S	K	D	N
R4	Non-Code	63	80	M8	6.5	



Metric 4-Bolt Mounting Flange (R4M)

Mounting Flange	Metric Code	Spigot Dia.	Flange Dimensions (All Dimensions in mm)			
			S	K	D	N
R4M	Non-Code	50	63	M6	8	



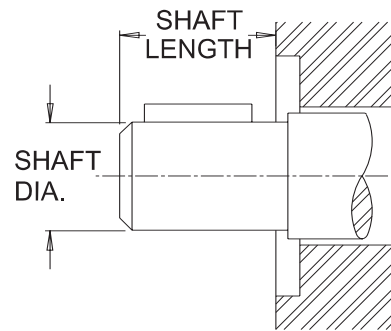


ANSI PUMP/MOTOR SHAFT INFORMATION

SHAFT IDENT CODE	SHAFT DIAMETER	SHORT SHAFT LENGTH	LONG SHAFT LENGTH	KEY WIDTH	*SAE REF.
13-1	.500	.750	—	.125	A-A
16-1	.625	.938	2.000	.156	A
22-1	.875	1.312	2.500	.250	B
25-1	1.000	1.500	2.750	.250	B-B
32-1	1.250	1.875	3.000	.312	C
38-1	1.500	2.125	3.250	.375	C-C
44-1	1.750	2.625	3.625	.437	D, E

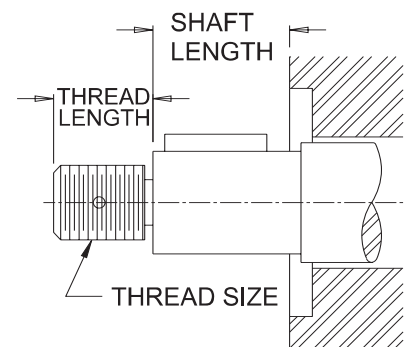
*Reference letters indicate the matching SAE front flange for each diameter

STRAIGHT SHAFT (without threads)



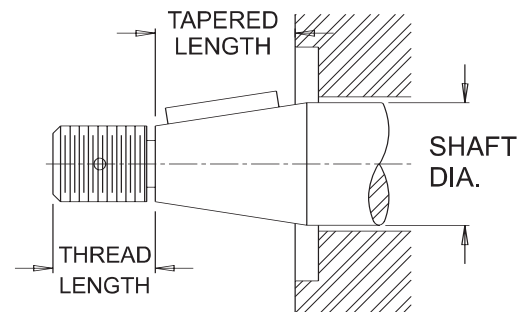
SHAFT IDENT CODE	SHAFT DIAMETER	STR. SHAFT LENGTH	THREAD LENGTH	THREAD WIDTH	KEY WIDTH
13-2	.500	.750	.563	$\frac{3}{8}$ -24	.125
16-2	.625	.937	.719	$\frac{1}{2}$ -20	.156
22-2	.875	1.312	.906	$\frac{5}{8}$ -18	.250
25-2	1.000	1.500	1.063	$\frac{3}{4}$ -16	.250
32-2	1.250	1.875	1.219	1-12	.312
38-2	1.500	2.125	1.375	$1\frac{1}{8}$ -12	.375
44-2	1.750	2.625	1.563	$1\frac{1}{4}$ -12	.437

STRAIGHT SHAFT (with threads)



SHAFT IDENT CODE	SHAFT DIAMETER	TAPERED SHAFT LENGTH	THREADED SHAFT LENGTH	THREAD WIDTH	KEY WIDTH
13-3	.500	.687	.500	$\frac{5}{16}$ -32	.125
16-3	.625	.687	.719	$\frac{1}{2}$ -20	.156
22-3	.875	1.125	.906	$\frac{5}{8}$ -18	.250
25-3	1.000	1.375	1.063	$\frac{3}{4}$ -16	.250
32-3	1.250	1.375	1.219	1-12	.312
38-3	1.500	1.875	1.375	$1\frac{1}{8}$ -12	.375
44-3	1.750	2.125	1.563	$1\frac{1}{4}$ -12	.437
50-3	2.000	2.875	1.563	$1\frac{1}{4}$ -12	.500

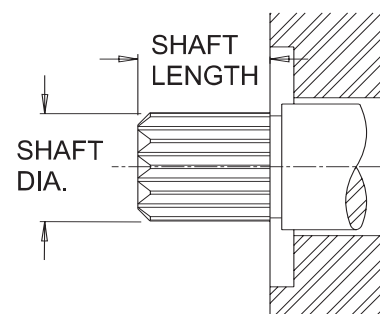
TAPERED SHAFT (with threads)



SHAFT IDENT CODE	SHAFT DIAMETER	SHAFT LENGTH	SPLINE SPECIFICATIONS	*SAE REF.
13-4	.500	.750	9T, 20/40 DP	A-A
16-4	.625	.937	9T, 16/32 DP	A
22-4	.875	1.312	13T, 16/32 DP	B
25-4	1.000	1.500	15T, 16/32 DP	B-B
32-4	1.250	1.875	14T, 12/24 DP	C
38-4	1.500	2.125	17T, 12/24 DP	C-C
44-4	1.750	2.625	13T, 8/16 DP	D, E
50-4	2.000	3.125	15T, 8/16 DP	F

*Reference letters indicate the matching SAE front flange for each diameter

30° INVOLUTE SPLINE



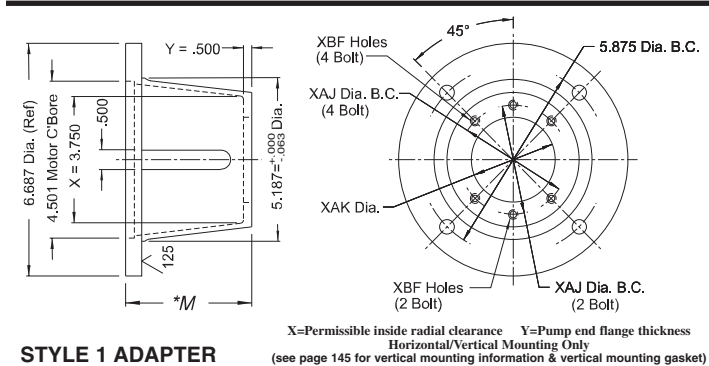


PUMP MOUNTS for ELECTRIC MOTORS

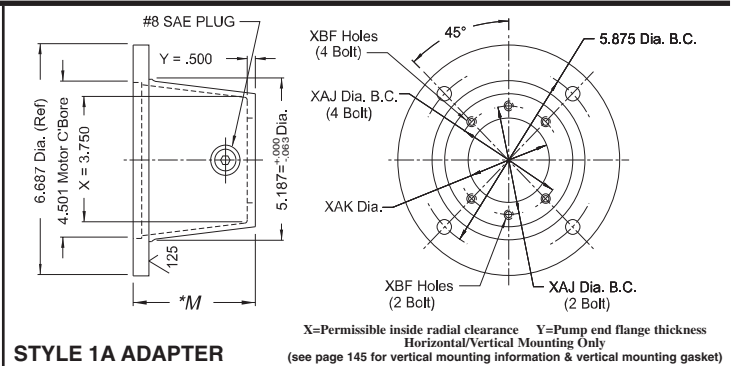
56C thru 145TC

182UC thru 184UC

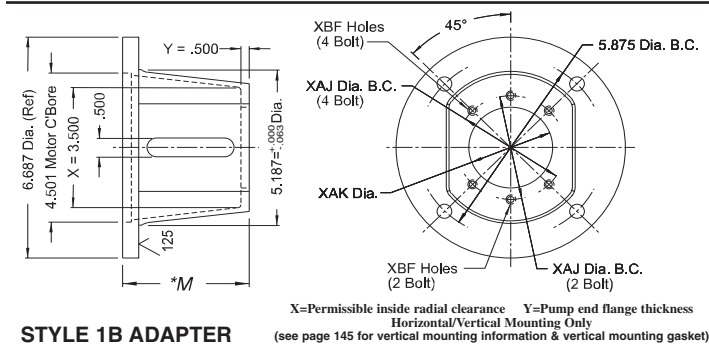
Motor Size	56C	143TC	145TC	182UC	184UC
HP/1800 RPM	1/4-1/2	1	2	1	1 1/2
Shaft Diameter	.625	.875	.875	.875	.875
Key Size	3/16	3/16	3/16	3/16	3/16
Shaft Length	2.063	2.125	2.125	2.125	2.125



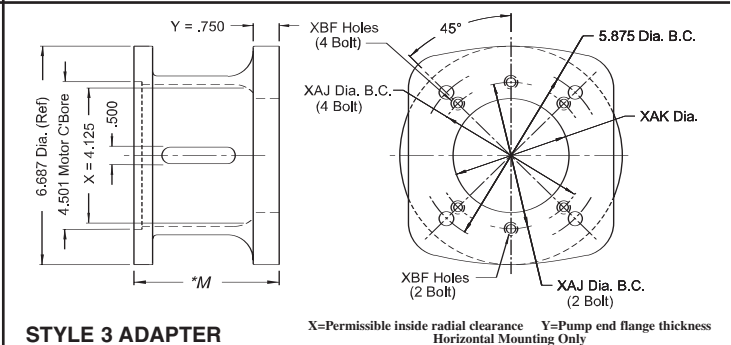
STYLE 1 ADAPTER



STYLE 1A ADAPTER



STYLE 1B ADAPTER



STYLE 3 ADAPTER

If your pump is not listed or is a non-standard pump, contact us for special machining and/or information. Not all pump mounting holes are supplied on every adapter.

Pump Type	Flange	XAJ Bolt Circle	XAK Pump Pilot	XBF Mounting Holes	Adapter Style	Mounting Horiz / Vert	Face to Face	Vescor Part Number
USA 4F17	4 Bolt	2.84	1.781	5/16-18	1	yes yes	3.50	170599
					1A	yes yes	3.50	6094
					1B	yes yes	3.81	152199
					1	yes yes	4.25	6029
					1A	yes yes	4.25	6070
					1B	yes yes	4.50	150199
					1	yes yes	5.06	171399
					1B	yes yes	5.25	150799+
					1	yes yes	3.50	170699
					1A	yes yes	3.50	6093
					1B	yes yes	3.81	152299
					1	yes yes	4.25	6027
SAE AA	2 Bolt	3.25	2.001	3/8-16	1A	yes yes	4.25	6095
					1B	yes yes	4.50	150299
					1	yes yes	5.06	171499
SAE A	2 Bolt	4.19	3.251	3/8-16	1B	yes yes	5.25	150699+
					1A	yes yes	3.50	6091
					1A	yes yes	4.25	6071

*NON-STOCK SPECIAL ORDER ITEM (see page 142 for Motor Mounting Spacers)



PUMP MOUNTS for ELECTRIC MOTORS

56C thru 145TC

182UC thru 184UC

Pump Type	Flange	XAJ Bolt Circle	XAK Pump Pilot	XBF Mounting Holes	Adapter Style	Mounting Horiz / Vert	Face to Face	Vescor Part Number	
Standard SAE Pump Flanges					1	yes yes	3.50	170799*	
					1B	yes yes	3.81	152399	
SAE A	2 Bolt	4.19	3.251	3/8-16	1	yes yes	4.25	6028*	
					1B	yes yes	4.50	150499	
					1	yes yes	5.06	6042	
					1B	yes yes	5.25	150599	
					3	yes no	4.25	149199	
SAE B	2 Bolt	5.75	4.001	1/2-13	3	yes no	5.06	149799	
	4 Bolt	5.00			3	yes no	5.63	6085	
	SAE C	4 Bolt			6.375	5.001	1/2-13	3	yes no
2 Bolt Special Mounting Flange									
	2H	2 Bolt	4.19	2.001	3/8-16	1	yes yes	4.25	6072
3 Bolt Mounting Flange									
	3H	3 Bolt	2.75	2.121	1/4-20	1	yes yes	4.25	6062
SAE 4 Bolt Mounting Flange (MODIFIED)									
4BM	4 Bolt	5.00	4.001	3/8-16	3	yes no	4.25	142199	
					3	yes no	5.06	142299+	
					3	yes no	5.63	142399+	
6 Bolt Mounting Flange									
	6HA	6 Bolt	3.25	2.626	7/16 Dia.	1	yes yes	4.25	1973+
	6HB	6 Bolt	3.25	2.626	3/8-16	1	yes yes	4.25	1948
	6HC	6 Bolt	2.874	2.249	7/16 Dia.	1	yes yes	5.06	6043
Double A Pumps (BSM)									
	14-42	4 Bolt	Spl. Mtg.	1.628	5/16 Dia.	1	yes yes	4.25	1936
	14-42-PFG	4 Bolt	Spl. Mtg.	1.249	15/64 Dia.	1	yes yes	4.25	1937
Metric Series Pump Flange									
80MM	4 Bolt	100MM	80.01MM	5/16-18	1	yes yes	3.50	151199	
					1	yes yes	4.25	1961+	
					1B	yes yes	4.50	151499	
					1	yes yes	5.06	151799+	
					1B	yes yes	5.25	152499+	
80MM	2 Bolt	109MM	80.01MM	3/8-16 5/16-18	1	yes yes	3.50	151299+	
	4 Bolt	103MM			1	yes yes	4.25	1879+	
					1B	yes yes	4.50	151599	
					1	yes yes	5.06	151899+	
					1B	yes yes	5.25	152599+	
100MM	2 Bolt	140MM	100.01MM	1/2-13 3/8-16	3	yes no	4.25	151399	
	4 Bolt	125MM			3	yes no	5.06	151699+	
					3	yes no	5.63	152699+	
Metric Series 4 Bolt Flange									
R4M	4 Bolt	63MM	50.01MM	.437 Dia.	1	yes yes	3.50	6082+	
					1	yes yes	4.25	6075	

*NON-STOCK SPECIAL ORDER ITEM

*Note:also contains additional SAE-A 4 bolt mounting suitable for mounting SAE-A 45°

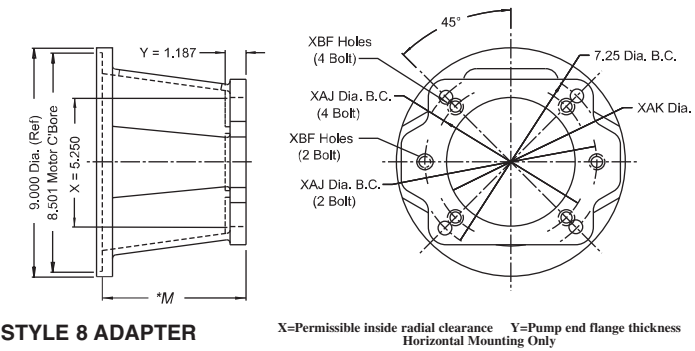
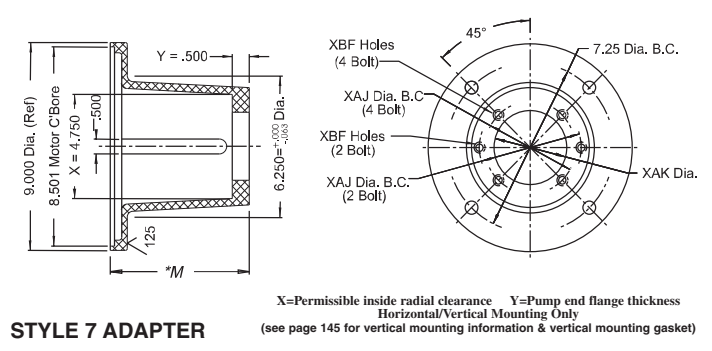
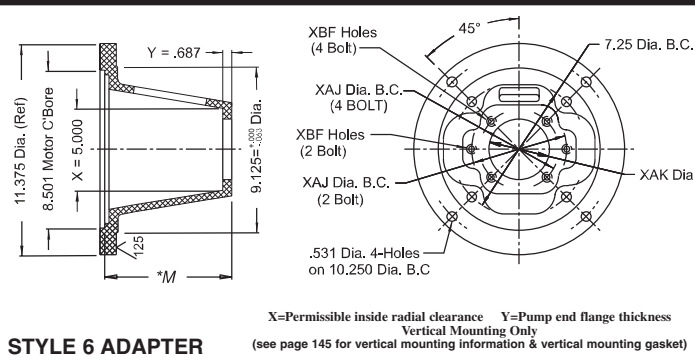
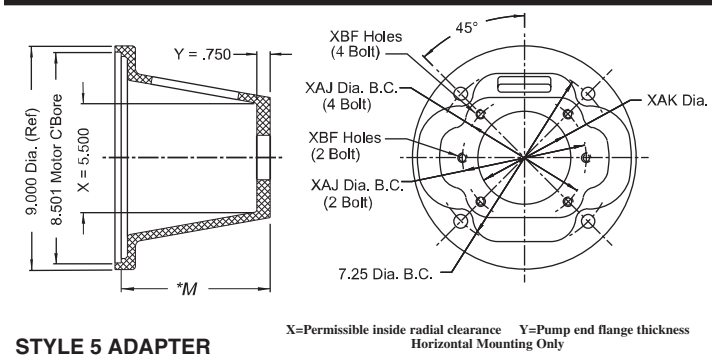


PUMP MOUNTS for ELECTRIC MOTORS

182TC thru 256TC

213UC thru 256UC

Motor Size	182TC	184TC	213TC	215TC	254TC	256TC	213UC	215UC	254UC	256UC
HP/1800 RPM	3	5	7-1/2	10	15	20	2	3	7-1/2	10
Shaft Diameter	1.125	1.125	1.375	1.375	1.625	1.625	1.125	1.125	1.375	1.375
Key Size	1/4	1/4	5/16	5/16	3/8	3/8	1/4	1/4	5/16	5/16
Shaft Length	2.625	2.625	3.125	3.125	3.750	3.750	2.750	2.750	3.500	3.500



If your pump is not listed or is a non-standard pump, contact us for special machining and/or information. Not all pump mounting holes are supplied on every adapter.

Pump Type	Flange	XAJ Bolt Circle	XAK Pump Pilot	XBF Mounting Holes	Adapter Style	Mounting Horiz / Vert	Face to Face	Vescor Part Number
USA4F17	4 Bolt	2.84	1.781	5/16-18	7	yes yes	4.38	2194
					7	yes yes	4.63	3371
					5	yes no	5.00	2000
					7	yes yes	5.00	6033
					6	no yes	5.00	6053
					7	yes yes	5.25	168199+
					7	yes yes	5.44	157199
					6	no yes	5.75	6056
					5	yes no	5.81	1965
					7	yes yes	5.88	6037
SAE AA	2 Bolt	3.25	2.001	3/8-16	7	yes yes	6.88	6041+
					6	no yes	6.81	6059+
					7	yes yes	4.38	2196
					7	yes yes	4.63	3373
					5	yes no	5.00	1994

*NON-STOCK SPECIAL ORDER ITEM

(see page 142 for Motor Mounting Spacers, page 143 for Vertical Mounting Rings)



PUMP MOUNTS for ELECTRIC MOTORS

182TC thru 256TC

213UC thru 256UC

Pump Type	Flange	XAJ Bolt Circle	XAK Pump Pilot	XBF Mounting Holes	Adapter Style	Mounting Horiz / Vert	Face to Face	Vescor Part Number
Standard SAE Pump Flanges					7	yes yes	5.00	6031
					6	no yes	5.00	6052
					7	yes yes	5.25	168299
					7	yes yes	5.44	157299
SAE AA	2 Bolt	3.25	2.001	3/8-16	6	no yes	5.75	6057
					7	yes yes	5.88	6035
					7	yes yes	6.88	6039+
					6	no yes	6.81	6060+
					7	yes yes	4.38	2198*
					7	yes yes	4.63	6026*
					5	yes no	5.00	1960
					7	yes yes	5.00	6030*
					6	no yes	5.00	6054
SAE A	2 Bolt	4.19	3.251	3/8-16	7	yes yes	5.25	168399*
					7	yes yes	5.44	3364*
					6	no yes	5.75	6055
					5	yes no	5.81	1959
					7	yes yes	5.88	6034*
					8	yes no	6.38	3365
					5	yes no	6.81	1950
					6	no yes	6.81	6058
					7	yes yes	6.88	6038*
					8	yes no	7.38	3361
					5	yes no	5.00	1964
					6	no yes	5.00	6032
					8	yes no	5.44	254199
SAE B	2 Bolt 4 Bolt	5.75 5.00	4.001	1/2-13	6	no yes	5.75	6036
					5	yes no	5.81	1952
					8	yes no	6.38	254299
					5	yes no	6.81	1951
					6	no yes	6.81	6040
					8	yes no	7.38	254399
					8	yes no	5.44	1946
SAE C	2 Bolt 4 Bolt	7.12 6.38	5.001	5/8-11 1/2-13	8	yes no	6.38	1955
					8	yes no	7.38	1956
SAE D	2 Bolt 4 Bolt	9.00	6.001	3/4-10	Steel	yes no	7.00	1886
					Steel	yes no	8.25	1884

*NON-STOCK SPECIAL ORDER ITEM

*contains (2) SAE 45° mounting patterns



PUMP MOUNTS for ELECTRIC MOTORS

182TC thru 256TC

213UC thru 256UC

Pump Type	Flange	XAJ Bolt Circle	XAK Pump Pilot	XBF Mounting Holes	Adapter Style	Mounting Horiz / Vert		Face to Face	Vescor Part Number
SAE 2 Bolt 45° Offset Mounting Flange					8	yes	no	5.44	2116
SAE B (45°)	2 Bolt	5.75	4.001	1/2-13	8	yes	no	6.38	2117
					8	yes	no	7.38	2118
					8	yes	no	5.44	2111+
SAE C (45°)	2 Bolt	7.12	5.001	5/8-11	8	yes	no	6.38	2110
					8	yes	no	7.38	2109
SAE 4 Bolt Mounting Flange (MODIFIED)					5	yes	no	5.00	2175+
					6	no	yes	5.00	181599+
4BM	4 Bolt	5.00	4.001	3/8-16	6	no	yes	5.75	181699+
					5	yes	no	5.81	2176
					8	yes	no	6.38	2177+
					6	no	yes	6.81	181799+
4 Bolt Square Mounting Flanges					Steel	yes	no	7.50	3350
4HC	4 Bolt	8.485	3.751	5/8-11	5	yes	no	5.00	2108
					6	no	yes	5.00	6089
4HNA	4 Bolt	5.006	3.742	3/8-16	6	no	yes	5.75	6096+
					5	yes	no	5.81	2190
4HNB	4 Bolt	6.901	5.316	1/2-13	8	yes	no	6.38	1931
					8	yes	no	7.38	6098
4HV	4 Bolt	5.000	3.750	3/8-16	5	yes	no	5.00	1943
					5	yes	no	5.81	1944
6 Bolt Mounting Flanges					5	yes	no	5.00	1972+
6HA	6 Bolt	3.25	2.626	7/16 Dia.	7	yes	yes	5.88	6044
6HC	6 Bolt	2.874	2.249	7/16 Dia.	7	yes	yes	6.88	6045
Double A Pumps (BSM)					5	yes	no	5.00	1935
14-42-PFG	4 Bolt	Spl. Mtg.	1.249	15/64 Dia.	7	yes	yes	4.38	3375
Metric Series Pump Flanges					7	yes	yes	4.63	3398+
					5	yes	no	5.00	2005+
					6	no	yes	5.00	3396+
80MM	4 Bolt	100MM	80.01MM	5/16-18	7	yes	yes	5.00	6046
					7	yes	yes	5.25	168599
					7	yes	no	5.44	3352+
					6	no	yes	5.75	3974+
					7	yes	yes	5.88	3351+
					8	yes	no	6.38	3358

*NON-STOCK SPECIAL ORDER ITEM



PUMP MOUNTS for ELECTRIC MOTORS

182TC thru 256TC

213UC thru 256UC

Pump Type	Flange	XAJ Bolt Circle	XAK Pump Pilot	XBF Mounting Holes	Adapter Style	Mounting Horiz / Vert	Face to Face	Vescor Part Number					
Metric Series Pump Flanges					5	yes no	6.81	3369					
80MM	4 Bolt	100MM	80.01MM	5/16-18	7	yes yes	6.88	3366					
					6	no yes	6.81	3397+					
					8	yes no	7.38	3353+					
					7	yes yes	4.38	2145+					
					7	yes yes	4.63	2148+					
					5	yes no	5.00	1877+					
					6	no yes	5.00	1997+					
					7	yes yes	5.00	2152+					
					7	yes yes	5.25	168499					
					80MM	2 Bolt 4 Bolt	109MM 103MM	80.01MM	3/8-16 5/16-18	7	yes yes	5.44	3354+
6	no yes	5.75	6099+										
7	yes yes	5.88	2149+										
8	yes no	6.38	2154+										
5	yes no	6.81	1947+										
6	no yes	6.81	2140+										
7	yes yes	6.88	2153+										
8	yes no	7.38	2163+										
100MM	2 Bolt 4 Bolt	140MM 125MM	100.01MM	1/2-13 3/8-16						5	yes no	5.00	1878+
										6	no yes	5.00	2166+
					8	yes no	5.44	2158+					
					6	no yes	5.75	2171+					
					8	yes no	6.38	3356					
					5	yes no	6.81	2156+					
					6	no yes	6.81	2157+					
					8	yes no	7.38	2159+					
					112MM	2 Bolt 4 Bolt	160MM 140MM	112.01MM	1/2-13 3/8-16	8	yes no	5.44	232199+
										8	yes no	6.38	232299+
8	yes no	7.38	232399+										
125MM	2 Bolt 4 Bolt	180MM 160MM	125.01MM	5/8-11 1/2-13	8	yes no	5.44	2167+					
					8	yes no	6.38	2174					
					8	yes no	7.38	2187+					
Metric Series 4 Bolt Flange					7	yes yes	5.00	6066					
R4	4 Bolt	80MM	63.01MM	13/32 Dia	7	yes yes	5.88	2183					
					7	yes yes	6.88	2184					

+NON-STOCK SPECIAL ORDER ITEM

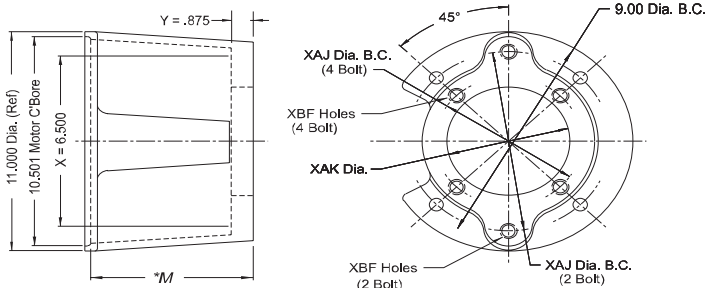


PUMP MOUNTS for ELECTRIC MOTORS

284 thru 286TC/TSC

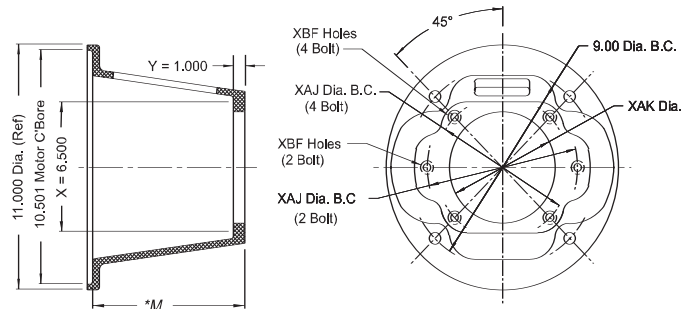
284 thru 286UC/USC

Motor Size	284TSC	286TSC	284TC	286TC	284UC	286USC
HP/1800 RPM	25	30	25	30	15	20
Shaft Diameter	1.625	1.625	1.875	1.875	1.625	1.625
Key Size	3/8	3/8	1/2	1/2	3/8	3/8
Shaft Length	3.000	3.000	4.375	4.375	4.625	4.625



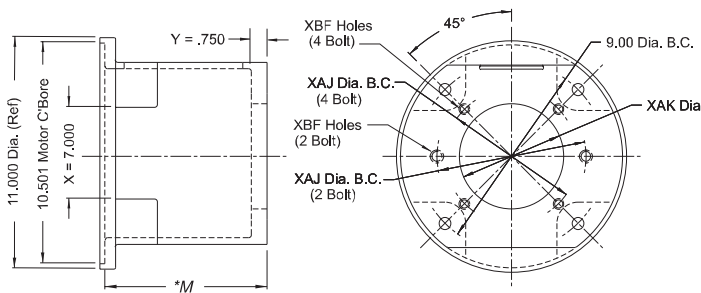
STYLE 10 ADAPTER

X=PERMISSIBLE INSIDE RADIAL CLEARANCE Y=Pump END Flange THICKNESS
HORIZONTAL Mounting ONLY



STYLE 11 ADAPTER

X=PERMISSIBLE INSIDE RADIAL CLEARANCE Y=Pump END Flange THICKNESS
HORIZONTAL Mounting ONLY



STYLE 12 ADAPTER

X=PERMISSIBLE INSIDE RADIAL CLEARANCE Y=Pump END Flange THICKNESS
HORIZONTAL Mounting ONLY

(see page 142 for Motor Mounting Spacers, page 143 for Vertical Mounting Rings)

If your pump is not listed or is a non-standard pump, contact us for special machining and/or information. Not all pump mounting holes are supplied on every adapter.

Pump Type	Flange	XAJ Bolt Circle	XAK Pump Pilot	XBF Mounting Holes	Adapter Style	Mounting Horiz / Vert	Face to Face	Vescor Part Number
SAE A	2 Bolt	4.19	3.251	3/8-16	11	yes no	5.88	1851
					11	yes no	6.75	167199
					11	yes no	7.19	1975
					11	yes no	7.88	1852
					11	yes no	8.88	1978
SAE B	2 Bolt 4 Bolt	5.75 5.00	4.001	1/2-13	11	yes no	5.88	1853
					11	yes no	6.75	167299
					11	yes no	7.19	1979
					11	yes no	7.88	1854
					11	yes no	8.88	1980
SAE C	2 Bolt 4 Bolt	7.12 6.38	5.001	5/8-11 1/2-13	11	yes no	5.88	1855
					11	yes no	6.75	167399
					11	yes no	7.19	1981
					11	yes no	7.88	1856
					11	yes no	8.88	1982



PUMP MOUNTS for ELECTRIC MOTORS

284 thru 286TC/TSC

284 thru 286UC/USC

Pump Type	Flange	XAJ Bolt Circle	XAK Pump Pilot	XBF Mounting Holes	Adapter Style	Mounting Horiz / Vert		Face to Face	Vescor Part Number
Standard SAE Pump Flanges									
SAE D	2 Bolt	9.00	6.001	3/4-10	10	yes	no	8.68	147999
SAE D	2 Bolt 4 Bolt	9.00	6.001	3/4-10	12	yes	no	7.88	161699
					12	yes	no	9.44	161799
SAE B (45°)	2 Bolt	5.75	4.001	1/2-13	11	yes	no	7.19	1857
					11	yes	no	7.88	181499
SAE C (45°)	2 Bolt	7.12	5.001	5/8-11	12	yes	no	7.88	1858
4 Bolt Square Mounting Flange									
4HC	4 bolt	8.485	3.751	5/8-11	12	yes	no	8.00	1887
6 Bolt Mounting Flange									
6HD	6 Bolt	4.750	3.001	.437 Dia.	11	yes	no	7.19	1934+
Metric Series Pump Flanges									
80MM	4 Bolt	100MM	80.01MM	5/16-18	11	yes	no	5.88	2168+
					11	yes	no	6.75	167499+
					11	yes	no	7.19	2178+
					11	yes	no	7.88	2169+
80MM	2 Bolt 4 Bolt	109MM 103MM	80.01MM	3/8-16 5/16-18	11	yes	no	8.88	2179
					11	yes	no	5.88	2188+
					11	yes	no	6.75	167599+
					11	yes	no	7.19	2192+
100MM	2 Bolt 4 Bolt	140MM 125MM	100.01MM	1/2-13 3/8-16	11	yes	no	7.88	2170+
					11	yes	no	8.88	2189+
					11	yes	no	5.88	3855+
					11	yes	no	6.75	167699+
112MM	2 Bolt 4 Bolt	160MM 140MM	112.01MM	1/2-13 3/8-16	11	yes	no	7.19	3865+
					11	yes	no	7.88	3857
					11	yes	no	8.88	3856+
					11	yes	no	5.88	232499+
125MM	2 Bolt 4 Bolt	180MM 160MM	125.01MM	5/8-11 1/2-13	11	yes	no	6.75	148199+
					11	yes	no	7.19	232599+
					11	yes	no	7.88	148299+
					11	yes	no	8.88	232699+
140MM	2 Bolt 4 Bolt	200MM 180MM	140.01MM	5/8-11 1/2-13	11	yes	no	5.88	3859+
					11	yes	no	6.75	167799+
					11	yes	no	7.19	3861+
					11	yes	no	7.88	3858
200MM	4 Bolt	250MM	200.01MM	3/4-10	11	yes	no	8.88	3869
					10	yes	no	8.68	232799+
140MM	2 Bolt 4 Bolt	200MM 180MM	140.01MM	5/8-11 1/2-13	12	yes	no	7.88	148399+
					12	yes	no	9.44	232899+
200MM	4 Bolt	250MM	200.01MM	3/4-10	12	yes	no	9.44	2181+

+NON-STOCK SPECIAL ORDER ITEM

NOTE: WITH VESCORS' POLICY OF CONSTANTLY IMPROVING ITS PRODUCTS, SPECIFICATIONS ARE SUBJECT TO CHANGE WITHOUT NOTICE.

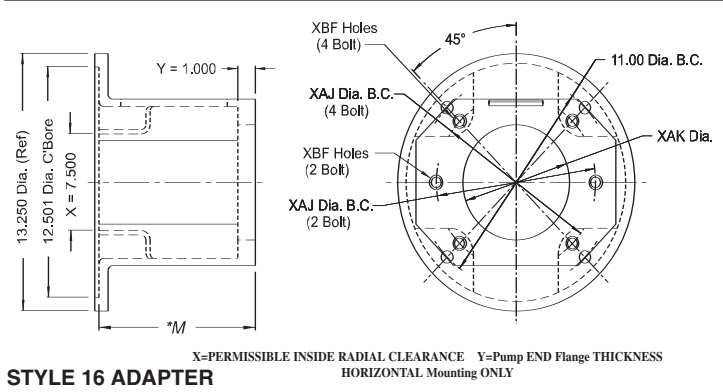
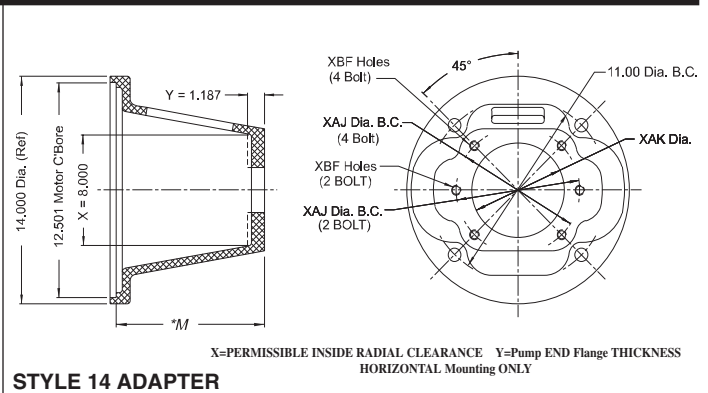
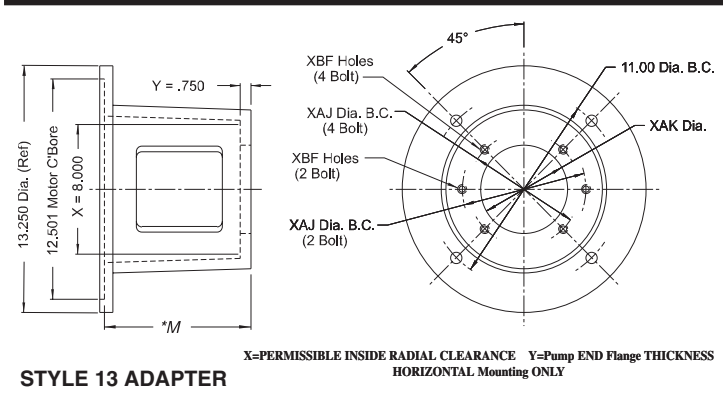


PUMP MOUNTS for ELECTRIC MOTORS

324 thru 405TC/TSC

324 thru 405UC/USC

Motor Size	324 / 326				364 / 365				404 / 405			
	TSC	TC	USC	UC	TSC	TC	USC	UC	TSC	TC	USC	UC
HP/1800 RPM	40/50	40/50	25/30	25/30	60/75	60/75	40/50	40/50	100/125	100/125	60/75	60/75
Shaft Diameter	1.875	2.125	6.25	1.875	1.875	2.375	1.875	2.125	2.125	2.875	2.125	2.375
Key Size	1/2	1/2	3/8	1/2	1/2	5/8	1/2	1/2	1/2	3/4	1/2	5/8
Shaft Length	3.500	5.000	3.000	5.375	3.500	5.625	3.500	6.125	4.000	7.00	4.000	6.875



+NON STOCK SPECIAL ORDER ITEM
(see page 142 for Motor Mounting Spacers, page 143 for Vertical Mounting Rings)

If your pump is not listed or is a non-standard pump, contact us for special machining and/or information. Not all pump mounting holes are supplied on every adapter.

Pump Type	Flange	XAJ Bolt Circle	XAK Pump Pilot	XBF Mounting Holes	Adapter Style	Mounting Horiz / Vert	Face to Face	Vescor Part Number
Standard SAE Pump Flanges	SAE A	2 Bolt	4.19	3.251	3/8-16	yes no	7.68	1945+
						no yes	6.30	260199
SAE B	2 Bolt	5.75	4.001	1/2-13	yes no	7.68	1974	
					yes no	8.88	1969	
					yes no	9.88	260599	
					yes no	6.30	260399	
SAE C	4 Bolt	6.38	5.001	5/8-11	yes no	7.68	1984	
					yes no	8.38	168799	
					yes no	8.88	1983	
SAE D	2 Bolt	9.00	6.001	3/4-10	yes no	9.88	260799	
					yes no	7.68	1986	
					yes no	8.88	1985	



PUMP MOUNTS for ELECTRIC MOTORS

324 thru 405TC/TSC

324 thru 405UC/USC

Pump Type	Flange	XAJ Bolt Circle	XAK Pump Pilot	XBF Mounting Holes	Adapter Style	Mounting Horiz / Vert		Face to Face	Vescor Part Number
Standard SAE Pump Flanges									
SAE D	2 Bolt 4 Bolt	9.00	6.001	3/4-10	16	yes	no	7.05	260999+
					16	yes	no	7.68	3370
					16	yes	no	8.38	234299
					16	yes	no	8.75	1883
					16	yes	no	8.88	3372
					16	yes	no	9.63	235099
					16	yes	no	10.63	261399
SAE 2 Bolt 45° Offset Mounting Flanges									
SAE B (45°)	2 Bolt	5.75	4.001	1/2-13	13	yes	no	6.30	2147
					14	yes	no	7.68	2133
					14	yes	no	8.88	2191
SAE C (45°)	2 Bolt	7.12	5.001	5/8-11	14	yes	no	7.68	2119
					14	yes	no	8.88	2120
					13	yes	no	9.88	2121
4 Bolt Square Mounting Flanges									
4HC	4 Bolt	8.485	3.751	5/8-11	14	yes	no	7.68	1999
					14	yes	no	8.88	1949
Metric Series Pump Flanges									
100MM	2 Bolt 4 Bolt	140MM 125MM	100.01MM	1/2-13 3/8-16	13	yes	no	6.30	3862+
					14	yes	no	7.68	3866+
					14	yes	no	8.88	3863+
					13	yes	no	9.88	3867+
125MM	2 Bolt 4 Bolt	180MM 160MM	125.01MM	5/8-11 1/2-13	13	yes	no	6.30	3864+
					14	yes	no	7.68	3868+
					14	yes	no	8.88	3870
140MM	2 Bolt	200MM	140.01MM	5/8-11	13	yes	no	9.88	3850+
					14	yes	no	7.68	232999+
					14	yes	no	8.88	148499+
140MM	2 Bolt 4 Bolt	200MM 180MM	140.01MM	5/8-11 1/2-13	16	yes	no	7.05	163199+
					16	yes	no	7.68	232099+
					13	yes	no	8.38	148599+
					16	yes	no	8.75	163299+
					16	yes	no	8.88	148699+
					16	yes	no	9.63	163399+
					16	yes	no	10.63	148799+
160MM	2 Bolt 4 Bolt	224MM 200MM	160.01MM	3/4-10 5/8-11	16	yes	no	7.05	3853+
					16	yes	no	7.68	3882
					16	yes	no	8.38	3880+
					16	yes	no	8.75	3852+
					16	yes	no	9.63	3881
200MM	4 Bolt	250MM	200.01MM	3/4-10	16	yes	no	10.63	3851
					16	yes	no	9.63	2193+
					16	yes	no	10.63	2195+

+NON-STOCK SPECIAL ORDER ITEM

NOTE: WITH VESCORS' POLICY OF CONSTANTLY IMPROVING ITS PRODUCTS, SPECIFICATIONS ARE SUBJECT TO CHANGE WITHOUT NOTICE.

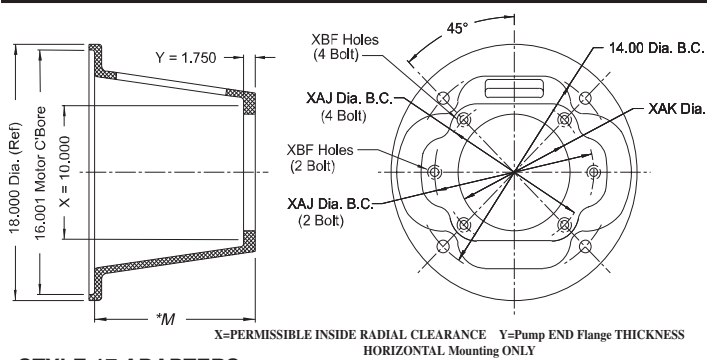


PUMP MOUNTS for ELECTRIC MOTORS

444 thru 445TSC/TC/USC/UC

447 thru 449TSC/TC

Motor Size	444/445TSC	444/445TC	447/449TSC	447/449TC	444/445USC	444/445UC
HP/1800 RPM	150/200	150/200	250/300	250/300	75/100	75/100
Shaft Diameter	2.375	3.375	2.375	3.375	2.125	2.875
Key Size	5/8	7/8	5/8	7/8	1/2	3/4
Shaft Length	4.500	8.250	4.500	8.250	4.00	8.375



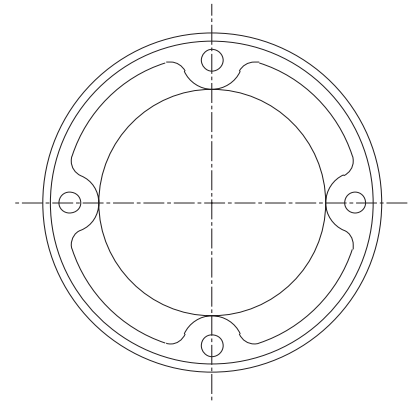
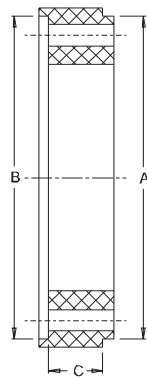
STYLE 17 ADAPTERS

If your pump is not listed or is a non-standard pump, contact us for special machining and/or information. Not all pump mounting holes are supplied on every adapter.

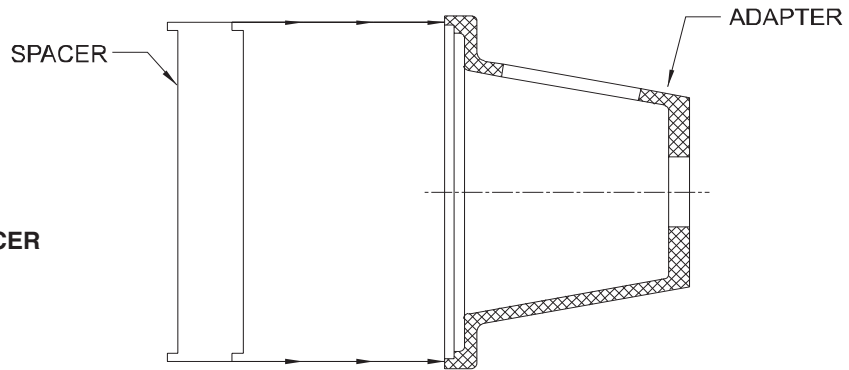
Pump Type	Flange	XAJ Bolt Circle	XAK Pump Pilot	XBF Mounting Holes	Adapter Style	Mounting Horiz / Vert	Face to Face	Vescor Part Number
SAE C	2 Bolt	7.12	5.001	5/8-11	17	yes no	8.88	1880
	4 Bolt	6.38		1/2-13	17	yes no	9.75	197299
SAE D	2 Bolt	9.00	6.001	3/4-10	17	yes no	8.88	1881
	4 Bolt				17	yes no	9.75	197499
SAE E	2 Bolt	12.50	6.501	1-8	17	yes no	8.88	1882
					17	yes no	9.75	197699



MOTOR MOUNTING SPACERS



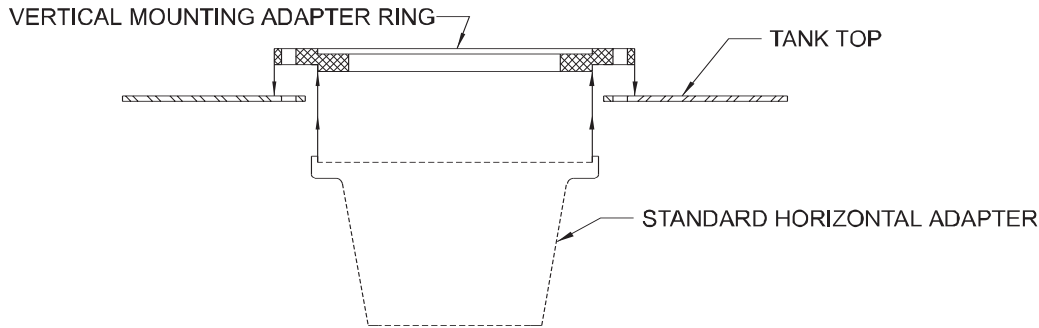
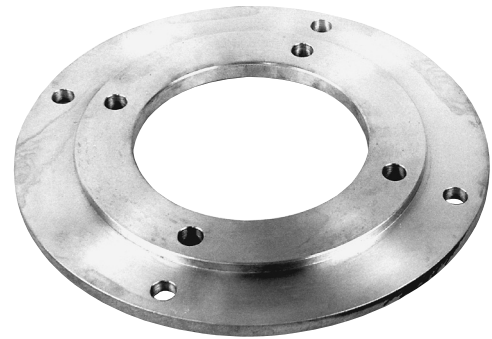
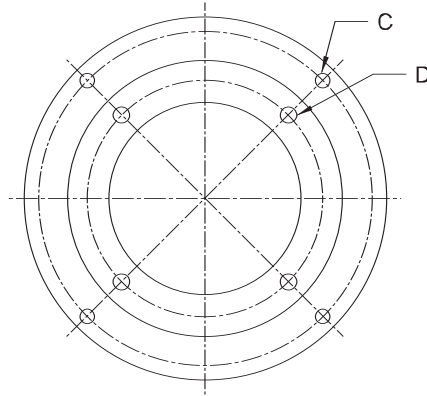
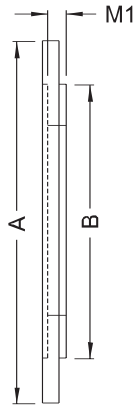
TYPICAL SPACER Mounting



Motor Size	Dimensions			Vescor Part No.	Remarks	Example
	A	B	C			
56C, 143TC, 145TC 182/184UC	4.500 4.497	4.501 4.504	1.000 .998	2114	Spacer can be used with any 56/145 size pump/motor mount to add 1" to the face to face dimension	(1) 2114 spacer + (1) 6028 pump/motor mount = 5.25" face to face dimension
182/256TC 213/256UC	8.500 8.497	8.501 8.503	1.000 .998	1962	Spacer can be used with any 182/256 size pump/motor mount to add 1" to the face to face dimension	(1) 1962 spacer + (1) 1960 pump/motor mount = 6.00" face to face dimension
284/286TC 284/286TSC 284/286UC	10.500 10.497	10.501 10.503	.500 .498	3047	Spacer can be used with any 284/286 size pump/motor mount to add 1/2" to the face to face dimension	(1) 3047 spacer + (1) 1981 pump/motor mount = 7.69" face to face dimension
284/286TC 284/286TSC 284/286UC	10.500 10.497	10.501 10.503	1.750 1.747	1992	Spacer can be used with any 284/286 size pump/motor mount to add 1 3/4" to the face to face dimension	(1) 1992 spacer + (1) 1981 pump/motor mount = 8.94" face to face dimension
324/405TC 324/405TSC 324/405UC 324/405USC	12.500 12.497	12.501 12.503	1.250 1.247	1993	Spacer can be used with any 324/405 size pump/motor mount to add 1 1/4" to the face to face dimension	(1) 1993 spacer + (1) 1984 pump/motor mount = 8.87" face to face dimension



VERTICAL MOUNTING ADAPTER RINGS



Motor Size	General Information	Dimensions					Mounting Information
		A	B	C	D	M1	
182TC thru 256TC 213UC thru 256UC	For use with 182TC/256TC and 213UC/256UC pump motor adapters. (add 1/2" to 'M' dimension of adapter) See page 111 for optional Vertical Mounting Gasket Vescor Part No. 268299	11 1/2" Dia.	8 1/2" Dia.	4 Holes 9/16" dia. on 10 1/4" dia. B.C.	4 Holes 9/16" dia. on 7 1/4" dia. B.C.	1/2"	Tank top requires a 9 1/8" dia. hole with (4) 9/16" dia. holes equally spaced on a 10 1/4" dia. bolt circle
284TC/TSC 286TC/TSC 284UC/286UC	For use with 284/286TC thru 284/286/TSC and 284/286UC pump motor adapters. (add 1/2" to 'M' dimension of adapter) See page 111 for optional Vertical Mounting Gasket Vescor Part No. 268399	13 1/2" Dia.	10 1/2" Dia.	4 Holes 9/16" Dia. on 12 1/2" Dia. B.C.	4 Holes 9/16" dia. on 9" Dia. B.C.	1/2"	Tank top requires a 11 1/8" dia. hole with (4) 9/16" dia. holes equally spaced on a 12 1/2" dia. bolt circle
324TC/TSC thru 405TC/TSC 324UC/USC thru 405UC/USC	For use with 324TC/TSC thru 405TC/TSC and 324UC/USC thru 405UC/USC pump motor adapters. (add 5/8" to 'M' dimension of adapter) See page 111 for optional Vertical Mounting Gasket Vescor Part No. 268499	16 3/4" Dia.	12 1/2" Dia.	4 Holes 1 1/16" Dia. on 15 1/2" Dia. B.C.	4 Holes 1 1/16" dia. on 11" Dia. B.C.	5/8"	Tank top requires a 14 1/8" dia. hole with (4) 1 1/16" dia. holes equally spaced on a 15 1/2" dia. bolt circle



VERTICAL INFORMATION/GASKETS

Vertical Mounting Information

VESCOR® Vertical Pump/Motor Adapters require a cutout to mount adapters vertically.
See chart below for mounting/cutout information.

Vertical Adapters		
Motor Size	Adapter Style	Cutout Information
56C 143TC/145TC 182/184UC	Style 1, 1A, 1B	Requires a 5 ³ / ₁₆ " dia. hole with (4) 7 ⁷ / ₁₆ " dia holes equally spaced on 5 ⁷ / ₈ " dia. B.C.
182/256TC 213/256UC	Style 6	Requires a 9 ¹ / ₈ " dia. hole with (4) 9 ⁹ / ₁₆ " dia. holes equally spaced in 10 ¹ / ₄ " dia. B.C.
182/256TC 213/256UC	Style 7	Requires a 6 ¹ / ₄ " dia. hole with (4) 9 ⁹ / ₁₆ " dia. holes equally spaced on 7 ¹ / ₄ " dia. B.C.
182/256TC 213/256UC	Vertical Mounting Adapter Ring 268299 on Horizontal Adapter (see information in chart below)	
284/286TC/TSC 284/286UC	None (Use Vertical Mounting Adapter Ring 268399) (see information in chart below)	
324/405TC/TSC 324/405UC/USC	None (Use Vertical Mounting Adapter Ring 268499) (see information in chart below)	
444/445TSC	None	

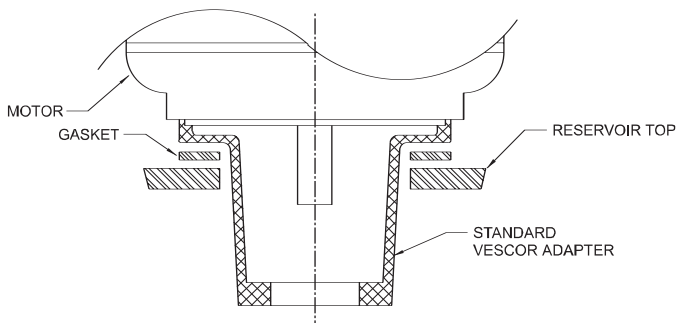
VERTICAL RINGS		
Motor Size	Part Number	Cutout Information
182/256TC 213/256UC	268299	Requires a 9 ¹ / ₈ " dia. hole with (4) 9 ⁹ / ₁₆ " dia holes equally spaced on 10 ¹ / ₄ " dia. B.C.
284/286TC/TSC 284/286UC	268399	Requires a 11 ¹ / ₈ " dia. hole with (4) 9 ⁹ / ₁₆ " dia. holes equally spaced in 12 ¹ / ₂ " dia. B.C.
324/405TC/TSC 324/405UC/USC	268499	Requires a 14 ¹ / ₈ " dia. hole with (4) 11 ¹ / ₁₆ " dia. holes equally spaced on 15 ¹ / ₂ " dia. B.C.

Vertical Mounting Gaskets

VESCOR Vertical Mounting Gaskets are used with VESCOR Pump/Motor Adapters to seal adapter to reservoir top.

Material: 3/32" thick cork neoprene

Ordering Information: Order Vertical Mounting Gaskets by VESCOR part numbers



Adapter Size	Adapter Style	Vescor Part Number
56C	1	
143TC/145TC 182/184UC	1A 1B	268599
182/256TC 213/256UC	6	268699
182/256TC 213/256UC	7	268799
182/256TC 213/256UC	Vertical Ring 268299	268699
284/286TC/TSC 284/286UC	Vertical Ring 268399	268899



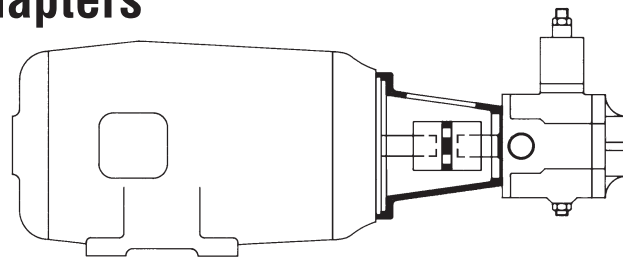
SELECTION GUIDE

For Electric Motor/Hydraulic Pump Adapters

How to Select a Pump/Motor Adapter

for your Nema "C" Face

Electric Motor and Flange Mounted Hydraulic Pump



Example:

Motor – 10 HP @ 1800 RPM, Pump –Nachi VDC-2B-E35

1. From Chart 1 and 2 on page 126 and Motor Manufacturers Specifications:

Determine :	A. Motor Frame Size	<u>215TC</u>	
	B. Motor Shaft Length	<u>3¹/₈"</u>	
	C. Motor Shaft Diameter and Keyway	<u>1³/₈" x 5⁵/₁₆"</u>	

Your Calculations Here

2. From Chart 3 on page 176

Determine:	A. Coupling Size	<u>L-100</u>	
	B. Maximum Allowable Bore Size	<u>1³/₈"</u>	
	C. Distance Between Flanges	<u>3³/₄"</u>	

3. From Pump Flange Mounting Information Charts on pages 127-129 and/or Pump Manufacturers Specifications

Determine:	A. Pump Mounting Flange	<u>SAE-B 2 Bolt</u>	
	B. Pump Shaft Length	<u>1¹³/₁₆"</u>	
	C. Pump Shaft Diameter and Keyway	<u>1" x 3³/₁₆"</u>	

4. Calculate the Ideal Pump/Adapter Length

	Motor Shaft Length (Line 1B) pages 126	<u>3¹/₈"</u>	
Plus	Distance Between Coupling Flange (Line 2C)	<u>3³/₄"</u>	+
Plus	Pump Shaft Length (Line 3B)	<u>1¹³/₁₆"</u>	+
Equals		<u>5¹¹/₁₆"</u>	=

5. From the following pages Select the Correct Vescor Pump/Motor Adapter

A. Locate proper frame size (Line 1A)	<u>215TC</u>	
B. Locate proper pump mounting flange (Line 3A)	<u>SAE B 2 Bolt</u>	
C. Select the closest face to face (M dimension) that exceeds the ideal length by at least 1/16	<u>5¹³/₁₆"</u>	
D. Select Pump/Motor orientation (horizontal or vertical)	<u>Horizontal</u>	
E. Read correct Vescor part number at right	<u>1952</u>	

6. Check to see

1. That coupling O.D. (Dim A) is less than adapter "X" dimension	<u>Coupling O.D. = 4.00</u> <u>Adapter "X" = 5.00</u>	<u>OK</u>
2. That coupling O.D. (Dim A) will fit thru pump pilot	<u>Coupling O.D. = 2¹⁷/₃₂</u> <u>Pump Pilot = 4.00</u>	<u>OK</u>
3. If coupling O.D. (dim A) is larger then pump pilot add adapter "Y" dimension to adapter "M" dimension (5C), select the next closest adapter (not applicable to this application)		<u>N/A</u>

7. How to Order

1. Specify the Vescor Pump/Motor Adapter Part Number	<u>1952</u>	
2. Specify the Motor Coupling Half Part Number	<u>L-100 1³/₈" x 5⁵/₁₆"</u>	<u>11522</u>
3. Specify the Pump Coupling Half Part Number	<u>L-100 1" x 3³/₁₆"</u>	<u>37259</u>
4. Specify the Coupling Spider (OCT) Part Number (See page 177)	<u>L-100 Sox (OCT)</u>	<u>11942</u>
