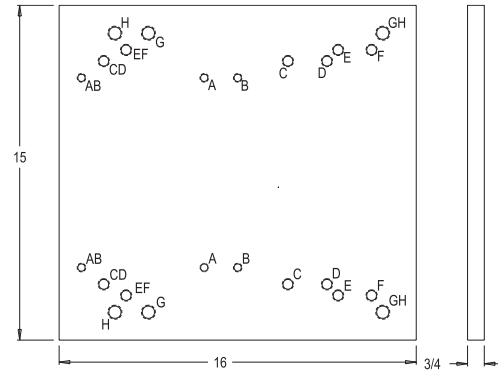
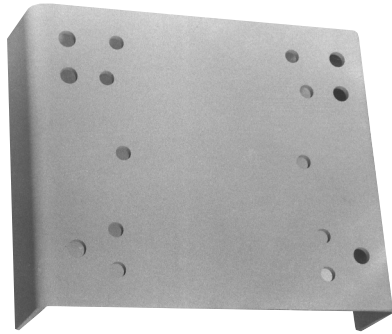


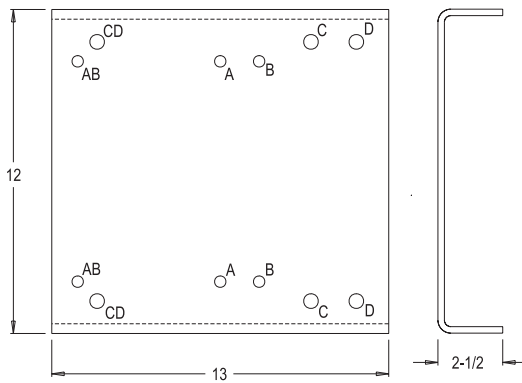


MOTOR BASE PLATES



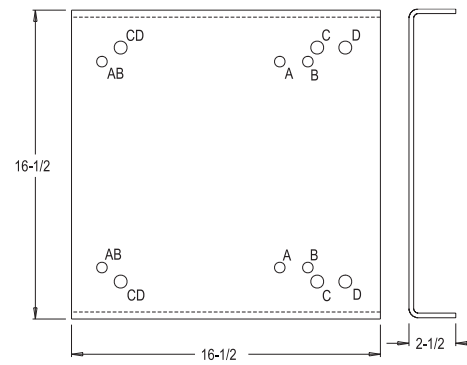
VESCOR
Part Number
5130
Weight 51#

Tap Size	Holes	Motor Frame	Tap Size	Holes	Motor Frame
A-3/8-16NC	4	213TC	E-1/2-13NC	4	284TC/TSC
B-3/8-16NC	4	215TC	F-1/2-13NC	4	286TC/TSC
C-1/2-13NC	4	254TC	G-5/8-11NC	4	324TC/TSC
D-1/2-13NC	4	256TC	H-5/8-11NC	4	326TC/TSC



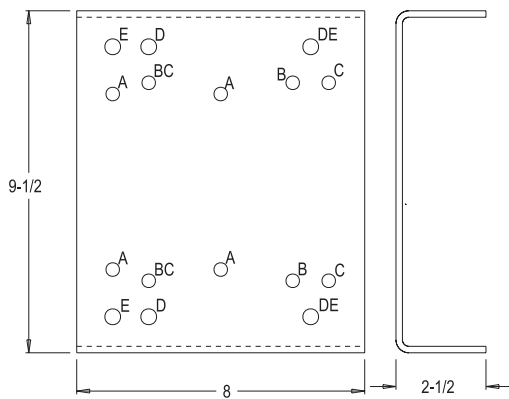
Diameter	Holes	Motor Frame
A - .437	4	213TC
B - .437	4	215TC
C - .562	4	254TC
D - .562	4	256TC

VESCOR
Part Number **5131**
Weight 15#



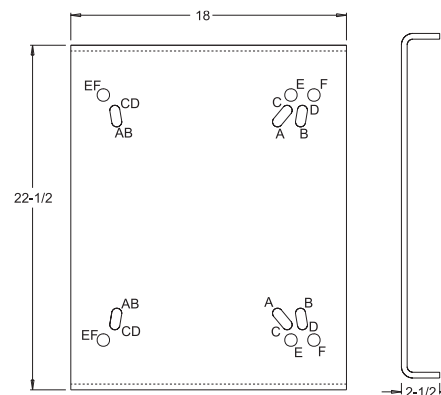
Diameter	Holes	Motor Frame
A - .562	4	284TC/TSC
B - .562	4	286TC/TSC
C - .687	4	324TC/TSC
D - .687	4	326TC/TSC

VESCOR
Part Number **5132**
Weight 34#



Diameter	Holes	Motor Frame
A - .375	4	56C
B - .375	4	143TC
C - .375	4	145TC
D - .437	4	182TC
E - .437	4	184TC

VESCOR
Part Number **5135**
Weight 6#



Diameter	Holes	Motor Frame
A - .656	4	324TC/TSC
B - .656	4	326TC/TSC
C - .656	4	364TC/TSC
D - .812	4	365TC/TSC
E - .812	4	404TC/TSC
F - .812	4	405TC/TSC

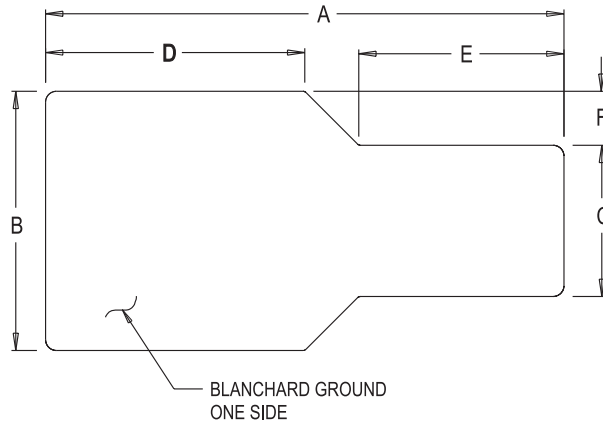
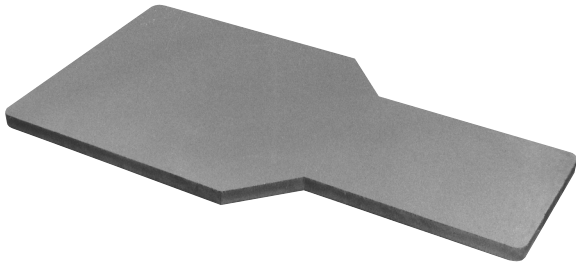
VESCOR
Part Number **VPM324**
Weight 51#

NOTE: WITH VESCORS' POLICY OF CONSTANTLY IMPROVING ITS PRODUCTS, SPECIFICATIONS ARE SUBJECT TO CHANGE WITHOUT NOTICE.



MOUNTING PLATES / GUARDS

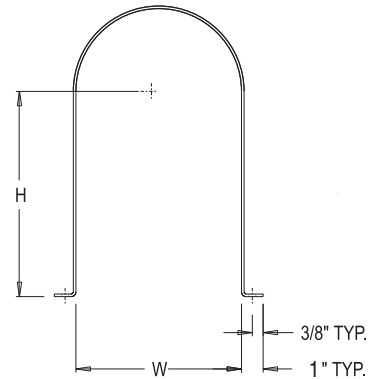
Mounting Plates



Style	Vescor Part Number	A	B	C	D	E	F	Material	Shipping Weight
10	5269	24"	12"	7"	12"	9 1/2"	2 1/2"	3/4" x 12" x 24"	50#
20	5270	27"	13"	9"	13 1/2"	11 1/2"	2"	3/4" x 13" x 27"	65#
30	5271	35"	16"	11"	17 1/2"	15"	2 1/2"	3/4" x 16" x 35"	95#
40	5291	38"	18"	14 1/2"	18"	13 3/4"	1 3/4"	7/8" x 18" x 38"	120#

Standard non-stock item

Coupling Guards



Motor Frame	Vescor Part Number	Dimensions (nominal)			Weight lbs.
		H	W	L	
143/145	CG-145	3 1/2"	3 1/2"	3 3/4"	1#
182/184	CG-184	4 1/2"	4"	4 1/4"	1 1/4#
213/215	CG-215	5 1/4"	4 1/2"	4 3/4"	1 1/2#
254/256	CG-256	6 1/4"	5"	5 1/4"	2#
284/286	CG-286	7"	5 1/2"	5 3/4"	2 1/2#
324/326	CG-326	8"	6"	6 1/4"	2 3/4#
364/365	CG-365	9"	6"	6 1/4"	3 1/2#
404/405	CG-405	10"	7 1/2"	8"	5#
444/445	CG-445	11"	9 1/2"	9"	7#

