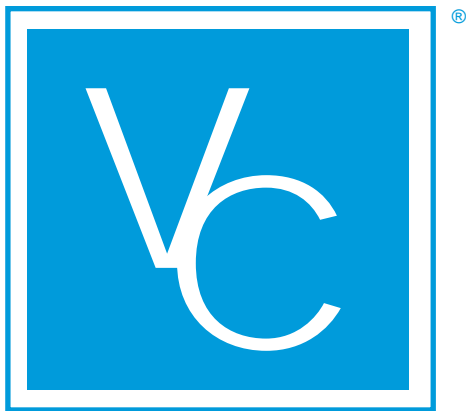


RESERVOIRS



VESCOR[®]

*Specialists in
Hydraulic Reservoirs
and Accessories*

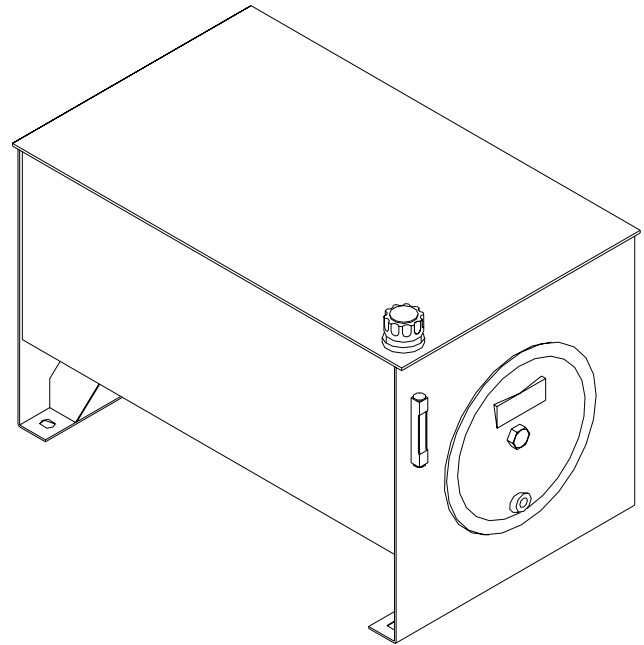
Hydraulic Reservoir Facts	1
VESCOR Reservoirs	2
Custom Reservoirs	3
J.I.C./NFPA Type Reservoirs Style A	4
J.I.C./NFPA Type Reservoirs Style A Stainless Steel.....	5
J.I.C./NFPA Type Reservoirs Style B	6
J.I C./NFPA Type Reservoirs Style RB (Removable Baffle).....	7
J.I C./NFPA Type Reservoirs Style RT (Removable Top)	8
J.I C./NFPA Type Reservoirs Style RT (Removable Top Cover Plates)	9
“L” Shaped Reservoirs Style C.....	10
“L” Shaped Reservoirs Style D	11
“T” Shaped Reservoirs Style T	12
Aluminum Reservoirs	13
DIN Type Reservoirs Style 1	14
DIN Type Reservoirs Style 2	15
DIN Type Reservoirs Style 3	16
DIN Type Reservoirs Style 4	17
Vertical Non-J.I.C. Type Reservoirs (Removable Top).....	18
Vertical Non-J.I.C. Cover Plates.....	19
Vertical Non-J.I.C. Type Reservoirs (Removable Top).....	20
Vertical Non-J.I.C. Cover Plates.....	21
Horizontal Non-J.I.C. Type Reservoirs (Removable Top)	22
Horizontal Non-J.I.C. Type Reservoirs (Welded Top)	23
Horizontal-Non-J.I.C. Type Reservoirs (Welded Top)	24
VESCOR Vari-Pak Reservoirs (2, 3, 5 Gallons)	25
VESCOR Vari-Pak Reservoirs (8, 10, 14 Gallons)	26
VESCOR Vari-Pak Reservoirs (20, 25 Gallons)	27
Installed Couplings and Downlines	28
Quick Reference/Replacement Parts	29

FACTS TO CONSIDER ON HYDRAULIC RESERVOIRS

SIZING

Folklore rules of thumb proclaim that the reservoir should be from 2 to 5 times the size of the pump GPM. For example: a 20 GPM pump should have a reservoir of 40 to 100 gallon capacity. However, this rule of thumb may not necessarily be true, especially if heat exchangers are used. With a heat exchanger the reservoir could be as small as one times the size of the pump GPM. Some closed loop systems require virtually no reservoir at all.

The accurate method for sizing a reservoir is to determine the heat balance for your hydraulic system. Try to accurately determine the amount of heat that will be generated through lost work, then determine the reservoir space available and how much heat can be dissipated in that space. From these calculations the necessity and size of the heat exchanger and the proper size of the reservoir can be determined.



INDOOR or OUTDOOR

Reservoirs for indoor service usually have rubber grommets in the top plates for sealing suction and return lines. These grommets are not water tight. For outdoor reservoirs, welded couplings are used seal the suction and return lines from weather and foreign fluids. For reservoirs requiring wash downs, welded couplings should also be used to prevent wash fluids from entering the tank.

Tank heaters are essential in cold climates. The most common heaters used are electrical immersion heaters. Most of them require a welded coupling in the tank side for installation. Sizing of the immersion heaters falls into two categories.

1. Sizing the immersion heater for maintaining the oil temperature when the pump is not running.

For sizing the immersion heater to maintain the oil temperature, calculate the total surface area of the tank (include all four sides plus top and bottom) in square feet. Then use the following approximate formula for heat transfer between a steel surface and surrounding air:

$$\text{WATTS} = 0.01 \times \text{AREA OF TANK (SQUARE FEET)} \\ \times \text{TEMPERATURE DIFFERENCE (°F)}$$

2. Sizing the immersion heater to heat the hydraulic oil to pump suction temperature requirements in a given time.

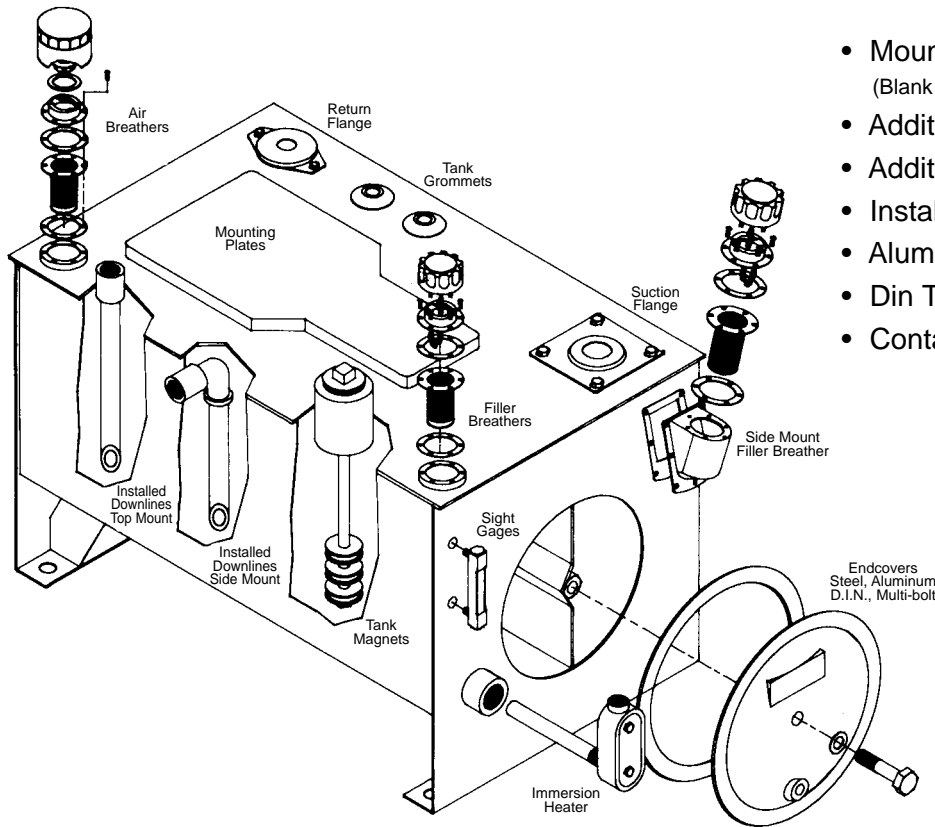
For sizing the immersion heater to heat the hydraulic oil. Use the following rule of thumb:

ONE WATT WILL HEAT ONE GALLON ONE °F IN ONE HOUR

Location of the reservoir is important. Adequate air circulation should be provided. For outdoor location, shield the tank from direct sun radiation and protect it from weather, if possible. For indoor location shield the tank from furnace and steam lines and other radiation. The reservoir can be painted white to help reflect radiant heat or painted black to help radiate heat from tank to atmosphere.

You will note that no discussion of the sizing of cooling heat exchangers is given here. Most full line hydraulic manufacturers and distributors have complete data for sizing. If you require information for your specific needs and cannot obtain assistance, contact us and we will help you.

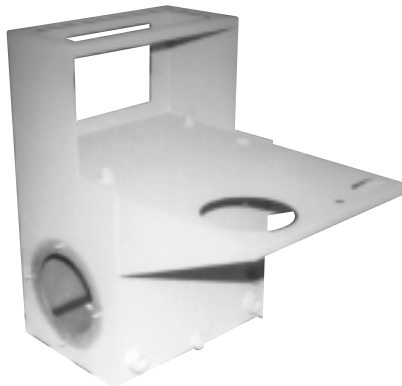
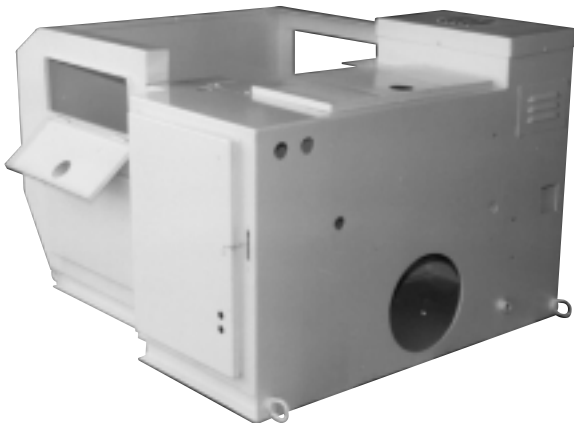
AVAILABLE OPTIONS FROM VESCOR®



- Mounting Plates
(Blank or Drilled and Tapped to your specifications)
- Additional Sight Gages
- Additional Filler Breathers
- Installed Couplings
- Aluminum Endcovers
- Din Type Endcovers
- Containment Trays/Stand

IMPORTANT FEATURES / STANDARD EQUIPMENT

- All VESCOR J.I.C. Reservoirs meet all J.I.C., N.F.P.A., and A.S.L.E. standards
- All VESCOR Reservoirs are skillfully fabricated from hot rolled steel plate and sheet. All steel is pickled and oiled which eliminates the need for sandblasting.
- Stationery baffles are properly slotted providing correct oil circulation.
- Single bolt endcovers provide the maximum opening for cleanout of reservoir.
- All VESCOR Reservoirs include sight gage and filler breather as standard equipment.
- Endcovers include bayonet gasket for positive seal.
- Reservoir exterior prime painted.



Custom Reservoirs Are Standard

For over 20 years, VESCOR has signified excellence in hydraulic reservoirs and accessories. VESCOR has always offered exceptional quality and service in the manufacturing of hydraulic reservoirs for a wide variety of applications.

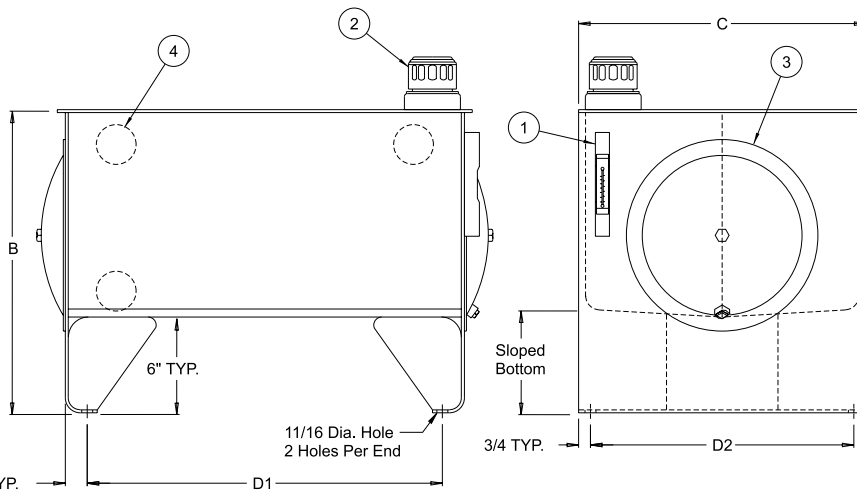
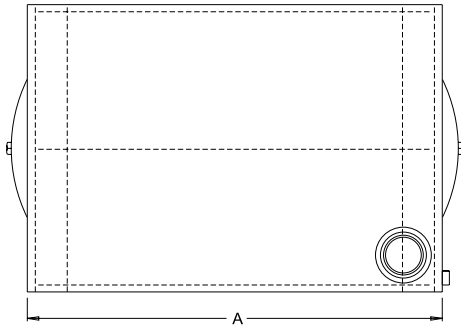
While offering a complete line of standard reservoirs, VESCOR is one of the largest manufacturer of customized tanks and reservoirs. VESCOR can manufacture your customized reservoir in quantities of one to one hundred. A complete, totally updated engineering department assists customers in developing the most cost effective and practical design for every application.

VESCOR is proud of its earned reputation for quality and on-time performance, this is due in part to refined engineering specifications and quality control efforts. VESCOR offers a depth of experience few competitors can match. VESCORS' personnel are continually trained in the use of new technology. New advanced equipment maintains the highest possible manufacturing standards.

VESCORS' *off the shelf* reservoirs are always available. Customers are often able to utilize *modified standards* in their design, thus saving in manufacturing costs.

When you need a quality tank or reservoir, call VESCOR for assistance and a quote.

At VESCOR **Custom Reservoirs Are Standard.**



Each Style A Reservoir Includes:

1. (1) Oil Level & Temp. Gage
2. (1) Riser with Filler Breather
3. (2) Steel Endcovers with Gaskets
*(1) Endcover includes 3/4" NPT Drain
4. Baffle with cutouts for circulation
5. Exterior of reservoir prime painted
6. Interior of reservoir coated with rust preventive oil

Sight Gage

- 10 to 200 gallon - 5" sight gage (ALG5T)
- 300 gallon and up - 10" sight gage (FMLG10T)

Filler Breather

Bayonet Style - 40 micron (5201)

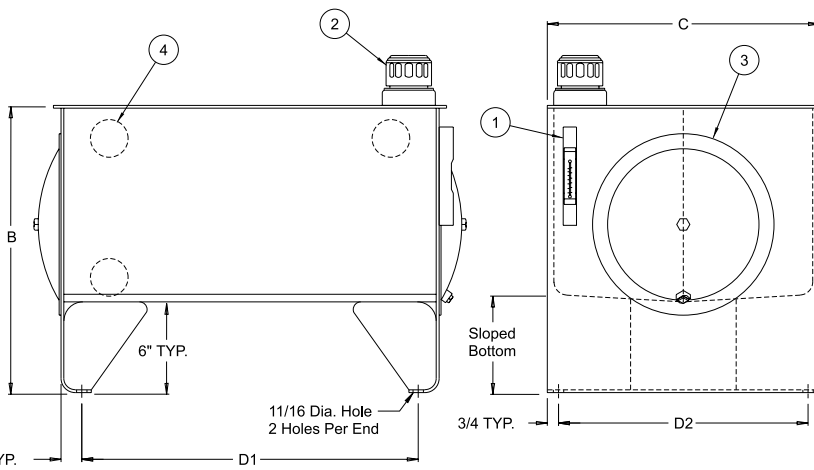
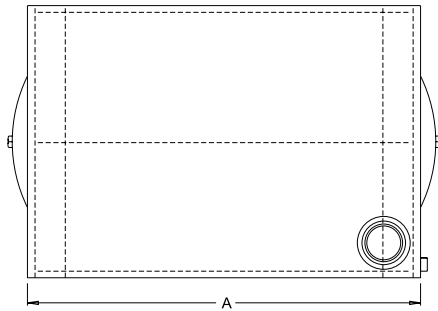
CAPACITY GALLONS	VESCOR PART NUMBER	TANK DIMENSIONS (INCHES)					MATERIAL THICKNESS		SHIPPING WEIGHT	
		A LENGTH	B HEIGHT	C WIDTH	MOUNTING CENTERS		END COVER	END		TOP
					D1 ±1/8"	D2 ±1/8"				
10	10010	22"	19"	18"	18-1/4"	16-1/2"	12"	7 GA.	7 GA.	105#
15	10015	26"	19"	18"	22-1/4"	16-1/2"	12"	7 GA.	7 GA.	105#
20	10020	30"	19"	18"	26-1/4"	16-1/2"	12"	7 GA.	7 GA.	124#
30	10030	36"	19-3/8"	24"	32-1/4"	22-1/2"	12"	7 GA.	7 GA.	178#
40	10040	36"	21"	24"	32-1/4"	22-1/2"	12"	7 GA.	7 GA.	190#
50	10050	36"	23"	24"	32-1/4"	22-1/2"	16"	7 GA.	7 GA.	200#
60	10060	48"	20-11/16"	27"	44-1/4"	25-1/2"	16"	7 GA.	3/8"	314#
80	10080	60"	21-1/2"	27"	56-1/4"	25-1/2"	16"	7 GA.	3/8"	398#
100	100100	60"	23-1/2"	27"	56-1/4"	25-1/2"	16"	7 GA.	3/8"	418#
120	100120	60"	27"	30"	56-1/4"	28-1/2"	16"	3/8"	3/8"	616#
150	100150	60"	31"	30"	56-1/4"	28-1/2"	16"	3/8"	3/8"	681#
200	100200	72"	29-3/8"	36"	68-1/4"	34-1/2"	18"	3/8"	3/8"	908#
300	100300	72"	38-1/2"	36"	68-1/4"	34-1/2"	18"	3/8"	3/8"	999#
400	100400	72"	38-1/2"	48"	68-1/4"	46-1/2"	18"	3/8"	1/2"	1578#
500	100500	72"	43"	48"	68-1/4"	46-1/2"	18"	3/8"	1/2"	1733#
600	100600	96"	43"	48"	92-1/4"	46-1/2"	18"	3/8"	1/2"	1838#
700	100700	96"	49"	48"	92-1/4"	46-1/2"	18"	3/8"	1/2"	1996#



J.I.C. TYPE RESERVOIRS STYLE A



STAINLESS STEEL



Each Stainless Steel Style A Reservoir Includes:

- (1) Oil Level & Temp. Gage
- (1) Riser with Filler Breather
- (2) Stainless Steel Endcovers with Gaskets *(1)Endcover includes 3/4" NPT Drain
- Baffle with cutouts for circulation
- Material - 304 Stainless Steel

Sight Gage

10 to 200 gallon - 5" sight gage (ALG5T)
 300 gallon and up - 10" sight gage (FMALG10T)

Filler Breather

Bayonet Style - 40 micron (5201)

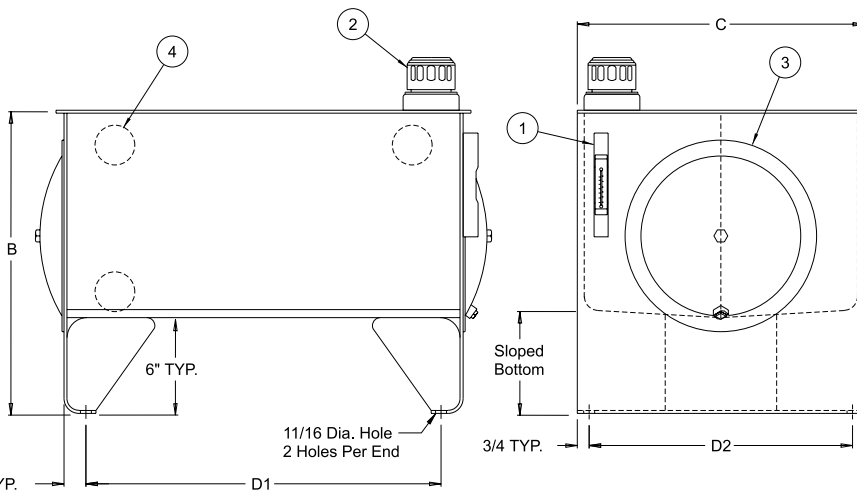
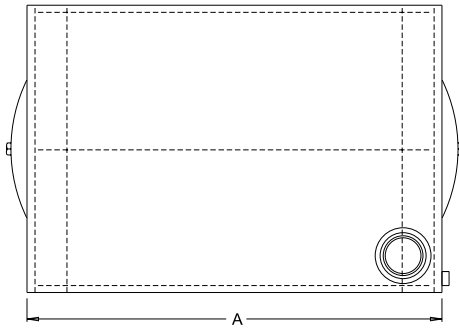
Note: Sight Gage and Filler Breather are not stainless steel

CAPACITY GALLONS	VESCO PART NUMBER	TANK DIMENSIONS (INCHES)						MATERIAL THICKNESS		SHIPPING WEIGHT
		A LENGTH	B HEIGHT	C WIDTH	MOUNTING CENTERS		END COVER	END	TOP	
					D ₁ ±1/8	D ₂ ±1/8				
10	23610	22"	19"	18"	18-1/4"	16-1/2"	12"	7 GA.	7 GA.	105#
15	23615	26"	19"	18"	22-1/4"	16-1/2"	12"	7 GA.	7 GA.	105#
20	23620	30"	19"	18"	26-1/4"	16-1/2"	12"	7 GA.	7 GA.	124#
30	23630	36"	19-3/8"	24"	32-1/4"	22-1/2"	12"	7 GA.	7 GA.	178#
40	23640	36"	21"	24"	32-1/4"	22-1/2"	12"	7 GA.	7 GA.	190#
50	23650	36"	23"	24"	32-1/4"	22-1/2"	16"	7 GA.	7 GA.	200#
60	23660	48"	20-11/16"	27"	44-1/4"	25-1/2"	16"	7 GA.	3/8"	314#
80	23680	60"	21-1/2"	27"	56-1/4"	25-1/2"	16"	7 GA.	3/8"	398#
100	236100	60"	23-1/2"	27"	56-1/4"	25-1/2"	16"	7 GA.	3/8"	418#
120	236120	60"	27"	30"	56-1/4"	28-1/2"	16"	3/8"	3/8"	616#
150	236150	60"	31"	30"	56-1/4"	28-1/2"	16"	3/8"	3/8"	681#
200	236200	72"	29-3/8"	36"	68-1/4"	34-1/2"	16"	3/8"	3/8"	908#
300	236300	72"	38-1/2"	36"	68-1/4"	34-1/2"	16"	3/8"	3/8"	999#
400	236400	72"	38-1/2"	48"	68-1/4"	46-1/2"	16"	3/8"	3/8"	1460#
500	236500	72"	43"	48"	68-1/4"	46-1/2"	16"	3/8"	3/8"	1618#
600	236600	96"	43"	48"	92-1/4"	46-1/2"	16"	3/8"	3/8"	1685#
700	236700	96"	49"	48"	92-1/4"	46-1/2"	16"	3/8"	3/8"	1843#

NOTE: WITH VESCO'S POLICY OF CONSTANTLY IMPROVING ITS PRODUCTS, SPECIFICATIONS ARE SUBJECT TO CHANGE WITHOUT NOTICE.



J.I.C. TYPE RESERVOIRS STYLE B



Each Style B Reservoir Includes:

1. (1) Oil Level & Temp Gage
2. (1) Riser with Filler Breather
3. (2) Steel Endcovers with Gaskets
*(1) Endcover includes 3/4" NPT Drain
4. Baffle with cutouts for circulation
5. Exterior of reservoir prime painted
6. Interior of reservoir coated with rust preventive oil

Sight Gage

10 to 400 gallon - 5" sight gage (ALG5T)

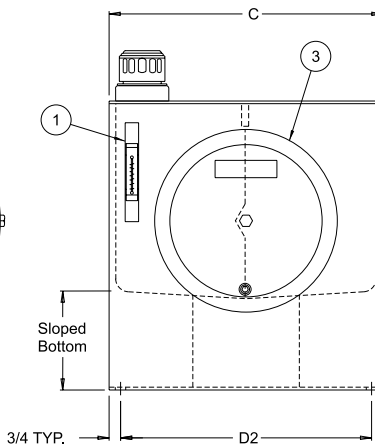
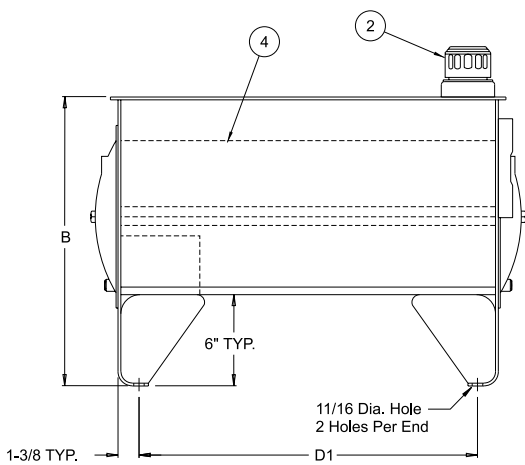
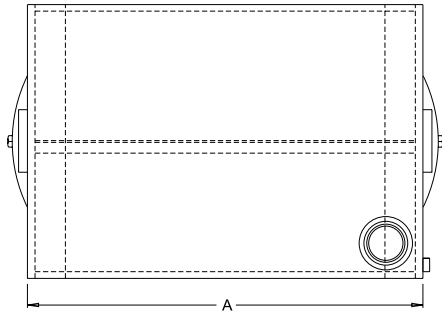
Filler Breather

Bayonet Style - 40 micron (5201)

CAPACITY GALLONS	VESCOR PART NUMBER	TANK DIMENSIONS (INCHES)						MATERIAL THICKNESS		SHIPPING WEIGHT
		A LENGTH	B HEIGHT	C WIDTH	MOUNTING CENTERS		END COVER	ENDS	TOP	
					D ₁ ±1/8"	D ₂ ±1/8"				
10	37510	24"	18"	16"	20-1/4"	14-1/2"	12"	11 GA.	7 GA.	80#
20	37520	32"	18"	21"	28-1/4"	19-1/2"	12"	11 GA.	7 GA.	94#
60	37560	38"	25"	25"	34-1/4"	23-1/2"	16"	7 GA.	1/4"	242#
80	37580	47"	26-7/8"	30"	43-1/4"	28-1/2"	16"	7 GA.	1/4"	365#
100	375100	47"	29"	30"	43-1/4"	28-1/2"	16"	7 GA.	1/4"	375#
120	375120	60"	27"	30"	56-1/4"	28-1/2"	16"	7 GA.	3/8"	512#
150	375150	60"	31"	30"	56-1/4"	28-1/2"	16"	7 GA.	3/8"	523#
200	375200	72"	29"	36"	68-1/4"	34-1/2"	18"	1/4"	3/8"	769#
*250	375250	72"	35"	36"	68-1/4"	34-1/2"	18"	1/4"	3/8"	900#
300	375300	82"	29"	48"	78-1/4"	46-1/2"	18"	1/4"	1/2"	1306#
400	375400	96"	24"	72"	92-1/4"	70-1/2"	⁺ 18"	3/8"	1/2"	2066#

*Non-stock special order items. + (4) endcovers (2) with 3/4" NPT drains provided

REMOVABLE BAFFLE



Each Style RB Reservoir Includes:

1. (1) Oil Level & Temp. Gage
2. (1) Riser with Filler Breather
3. (2) Aluminum Endcovers with Gaskets
*Each endcover includes (1) #12 SAE Drain
4. Removable Baffle
5. Exterior of reservoir prime painted
6. Interior of reservoir coated with rust preventive oil

Sight Gage

10 to 300 gallon - 5" sight gage (ALG5T)

Filler Breather

Bayonet Style - 40 micron (5201)

CAPACITY GALLONS	VESCOR PART NUMBER	TANK DIMENSIONS (Inches)					END COVER	MATERIAL THICKNESS		SHIPPING WEIGHT
		A LENGTH	B HEIGHT	C WIDTH	MOUNTING CENTERS			ENDS	TOP	
					D ₁ ±1/8	D ₂ ±1/8				
10	19910	24"	18"	16"	20-1/4"	14-1/2"	12"	11 GA	7 GA	80#
15	19915	26"	19"	18"	22-1/4"	16-1/2"	12"	11 GA	7 GA	105#
20	19920	32"	18"	21"	28-1/4"	19-1/2"	12"	11 GA	7 GA	124#
30	19930	36"	19-3/8"	24"	32-1/4"	22-1/2"	12"	7 GA	7 GA	178#
40	19940	36"	21"	24"	32-1/4"	22-1/2"	12"	7 GA	7 GA	190#
50	19950	36"	23"	24"	32-1/4"	22-1/2"	12"	7 GA	7 GA	200#
60	19960	38"	25"	25"	34-1/2"	23-1/2"	18"	7 GA	7 GA	242#
80	19980	47"	26-7/8"	30"	43-1/4"	28-1/2"	18"	7 GA	1/4"	365#
100	199100	47"	29"	30"	43-1/4"	28-1/2"	18"	7 GA	1/4"	375#
120	199120	60"	27"	30"	56-1/4"	28-1/2"	18"	7 GA	1/4"	448#
150	199150	60"	31"	30"	56-1/4"	28-1/2"	18"	7 GA	1/4"	460#
200	199200	72"	29"	36"	68-1/4"	34-1/2"	18"	1/4"	3/8"	769#
300	199300	82"	29"	48"	78-1/4"	46-1/2"	18"	1/4"	3/8"	860#

Each Style RT Reservoir Includes:

1. (1) Oil Level & Temp Gage
2. Endcover(s) with Gasket(s)
3. Baffle with cutout for circulation
4. (1) 3/4" NPT Drain
5. (1) Customer Return Connection
6. Channel Gasket for Removable Top (see note)
7. Exterior of reservoir prime painted
8. Interior of reservoir coated with rust preventive oil

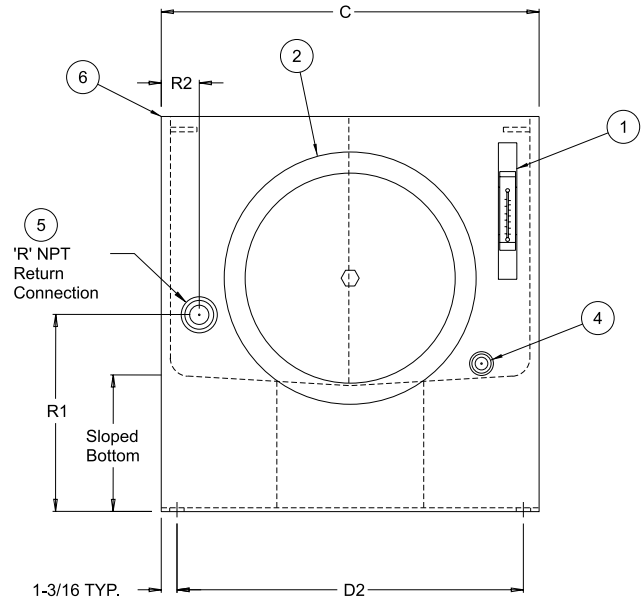
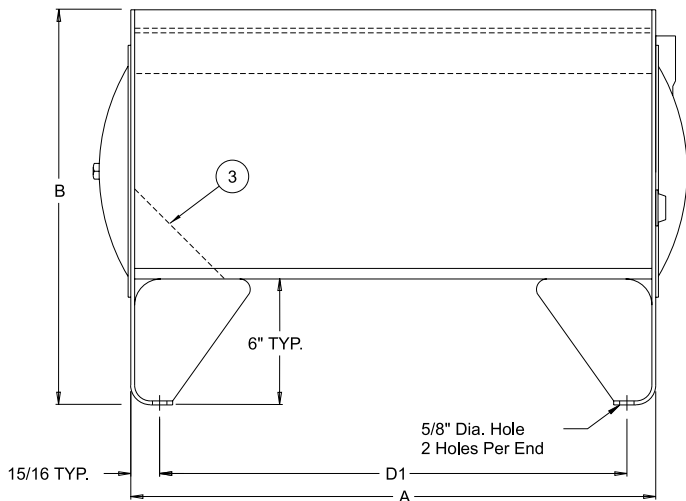
NOTE: Removable Top Plates are ordered as separate items (see page 9)

Cleanout Covers

<u>10 and 20 Gallon</u>	<u>35 Gallon</u>	<u>50 to 210 Gallon</u>
(1) 10" Dia. cleanout (sight gage end only)	(1) 10" Dia. cleanout/ both ends	(1) 14" Dia. cleanout/both ends

Sight Gage

10 to 210 gallon - 5" sight gage (ALG5T)

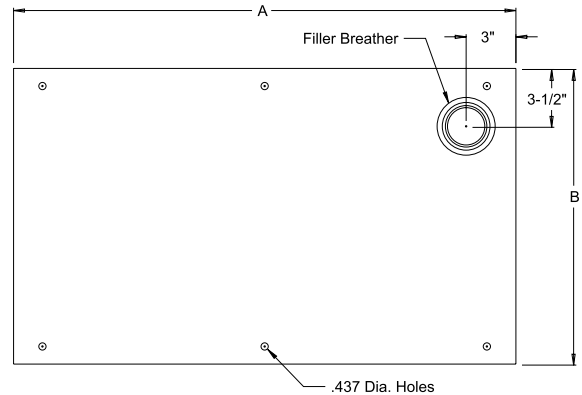
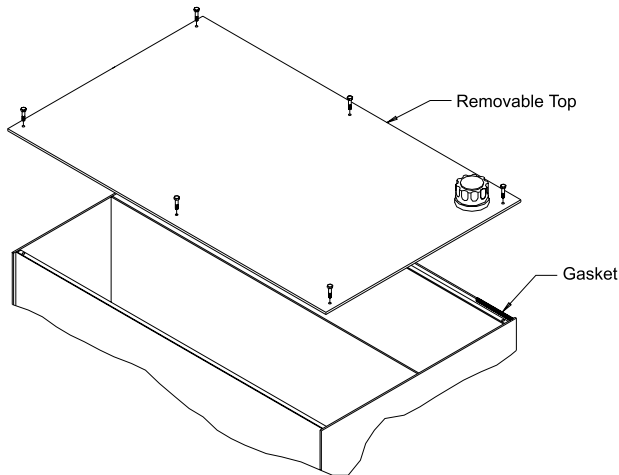


CAPACITY GALLONS	VESCOR PART NUMBER	TANK DIMENSIONS (INCHES)					RETURN CONNECTIONS			SHIPPING WEIGHT
		A LENGTH	B HEIGHT	C WIDTH	MOUNTING CENTERS		R1	R2	R	
					D1 ±1/8"	D2 ±1/8"				
10	12210	18-1/4"	18"	17-7/8"	16-3/8"	15-1/2"	8-1/2"	1-1/2"	1/2" NPT	90#
20	12220	29-3/8"	18"	17-7/8"	27-1/2"	15-1/2"	8-1/2"	1-1/2"	1" NPT	120#
35	12235	35-3/8"	18-1/4"	23-7/8"	33-1/2"	21-1/2"	9-1/2"	3"	1-1/2" NPT	160#
50	12250	35-3/8"	23"	23-7/8"	33-1/2"	21-1/2"	9-1/2"	3"	1-1/2" NPT	197#
70	12270	47-3/8"	21"	26-7/8"	45-1/2"	24-1/2"	9-1/2"	3"	1-1/2" NPT	235#
90	12209	59-3/8"	21-1/2"	26-7/8"	57-1/2"	24-1/2"	9-1/2"	3"	2" NPT	281#
130	122130	59-3/8"	26"	29-7/8"	57-1/2"	27-1/2"	9-1/2"	3"	2" NPT	345#
160	122160	59-3/8"	31"	29-7/8"	57-1/2"	27-1/2"	9-1/2"	3"	2" NPT	398#
210	122210	71-3/8"	28-1/4"	35-7/8"	69-1/2"	33-1/2"	9-1/2"	3"	2" NPT	484#

NOTE: Removable Top Plates are ordered as separate items (see page 9). Weights do not include covers.



J.I.C. TYPE RESERVOIRS STYLE RT REMOVABLE TOPS



Each Style RT Removable Top Includes:

1. (1) Riser with Filler Breather
2. (1) Set of Mounting Hardware
3. Exterior surface of removable top prime painted

Filler Breather: Bayonet Style - 40 micron (5201)

VESCOR PART NUMBER	DESCRIPTION		DIMENSIONS		SHIPPING WEIGHT
	GALLONS	COVER	A	B	
465001	10	1/4"	19"	18"	25#
465002	10	3/8"	19"	18"	37#
465003	10	1/2"	19"	18"	50#
465004	20	1/4"	30"	18"	39#
465005	20	3/8"	30"	18"	59#
465006	20	1/2"	30"	18"	78#
465007	35	1/4"	36"	24"	62#
465008	35	3/8"	36"	24"	94#
465009	35	1/2"	36"	24"	123#
465010	35	3/4"	36"	24"	184#
465011	50	1/4"	36"	24"	52#
465012	50	3/8"	36"	24"	86#
465013	50	1/2"	36"	24"	104#
465014	50	3/4"	36"	24"	172#
465015	70	1/4"	48"	27"	93#
465016	70	3/8"	48"	27"	140#
465017	70	1/2"	48"	27"	186#
465018	70	3/4"	48"	27"	279#

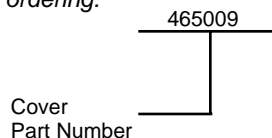
VESCOR PART NUMBER	DESCRIPTION		DIMENSIONS		SHIPPING WEIGHT
	GALLONS	COVER	A	B	
465019	90	1/4"	60"	27"	116#
465020	90	3/8"	60"	27"	175#
465021	90	1/2"	60"	27"	232#
465022	90	3/4"	60"	27"	348#
465023	130	1/4"	60"	30"	129#
465024	130	3/8"	60"	30"	194#
465026	130	1/2"	60"	30"	258#
465027	130	3/4"	60"	30"	387#
465028	130	1"	60"	30"	516#
465029	160	1/4"	60"	30"	129#
465030	160	3/8"	60"	30"	194#
465031	160	1/2"	60"	30"	258#
465032	160	3/4"	60"	30"	387#
465033	160	1"	60"	30"	516#
465034	210	1/4"	72"	36"	186#
465035	210	3/8"	72"	36"	278#
465036	210	1/2"	72"	36"	371#
465037	210	3/4"	72"	36"	566#
465038	210	1"	72"	36"	736#

ORDERING INFORMATION:

Reservoirs do not include Removable Tops.

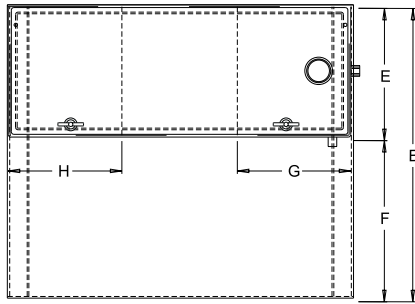
Removable Tops are ordered as separate items.

Please use VESCOR part number when ordering.

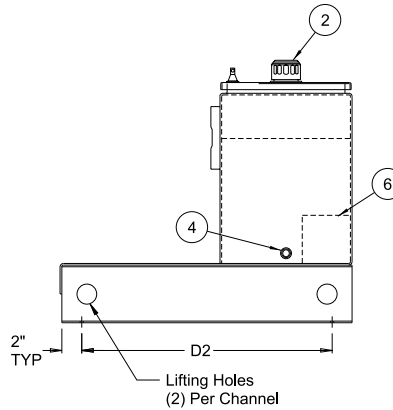
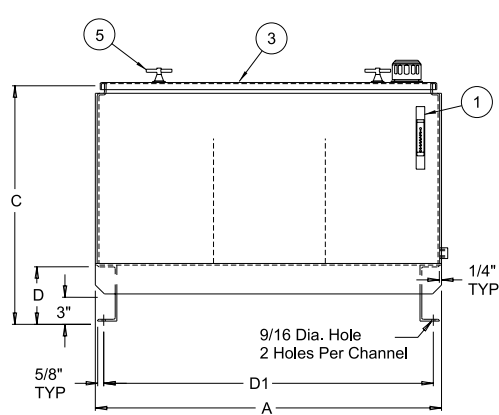
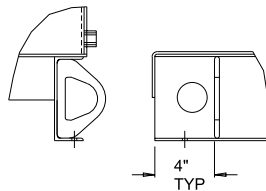


NOTE:

Removable Top in example is a 1/2" thick top for a 35 gallon RT Reservoir.



OPTIONAL LIFT LUG INSTALLATION
(2) LUGS PER CHANNEL



Each "L" Shaped Style C Reservoir Includes:

1. (1) Oil Level & Temp. Gage
2. (1) Filler Breather
3. (1) Hinged Cover with gasket
4. (1) 3/4" NPT Drain
5. (2) T-Handles (3) for 200 gallon and up
6. Baffle with cutout for circulation
7. Exterior of reservoir prime painted
8. Interior of reservoir coated with rust preventive oil.
9. 100 gallon to 600 gallon include (1) door prop (not shown)

Sight Gage

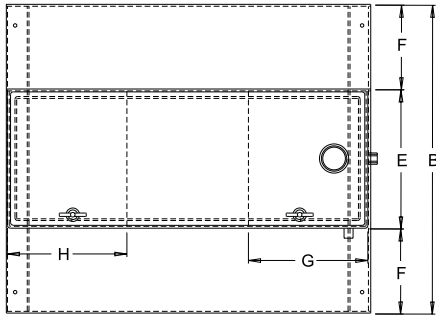
10 to 200 gallon - 5" sight gage (ALG5T)
300 gallon and up - 10" sight gage (FMALG10T)

Filler Breather

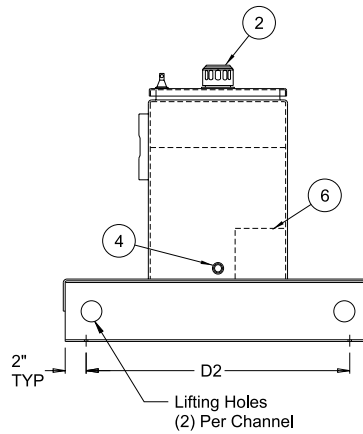
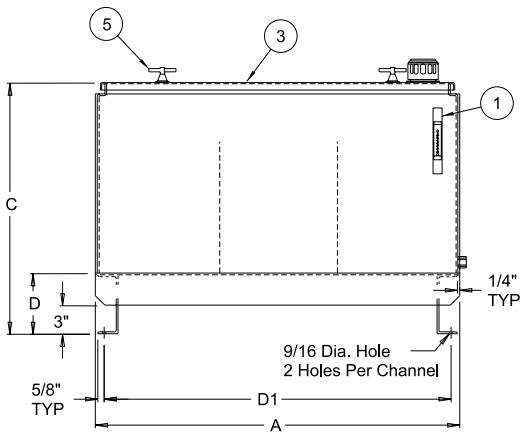
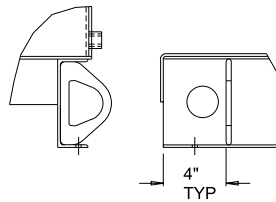
Bayonet Style - 40 micron (5201)

CAPACITY GALLONS	VESCOR PART NUMBER	TANK DIMENSIONS (INCHES)										SHIPPING WEIGHT
		A	B	C	D	E	F	G	H	MOUNTING CENTERS		
										D1 ±1/8"	D2 ±1/8"	
10	VL-10	24"	23-3/8"	23-7/8"	6-3/16"	11-1/8"	12-1/4"	11"	N/A	22-1/4"	19"	135#
20	VL-20	30"	27-3/8"	25-7/8"	6-3/16"	13-1/2"	13-7/8"	12"	N/A	28-1/4"	23"	183#
30	VL-30	36"	30-3/8"	29-7/8"	6-3/16"	13-3/4"	16-5/8"	12"	N/A	34-1/4"	26"	240#
45	VL-45	54"	31-3/8"	29-7/8"	6-3/16"	13-3/4"	17-5/8"	12"	12"	52-1/4"	27"	335#
60	VL-60	48"	37-3/8"	35-7/8"	6-3/16"	16-3/4"	20-5/8"	16"	N/A	46-1/4"	33"	376#
80	VL-80	66"	38-9/16"	36-1/16"	6-3/8"	16-3/8"	22"	16"	16"	64-1/4"	34"	670#
100	VL-100	60"	42-9/16"	39-1/16"	6-3/8"	19-3/8"	23"	16"	N/A	58-1/4"	38"	715#
120	VL-120	72"	42-9/16"	39-1/16"	6-3/8"	19-3/8"	23"	16"	16"	70-1/4"	38"	836#
150	VL-150	72"	50-9/16"	39-1/16"	6-3/8"	25-3/8"	25"	16"	N/A	70-1/4"	46"	939#
200	VL-200	84"	51-9/16"	42-1/16"	6-3/8"	25-3/8"	26"	16"	16"	82-1/4"	47"	1128#
300	VL-300	84"	60"	54-3/16"	6-1/2"	25-3/8"	34-7/16"	16"	16"	82-1/4"	55-1/2"	1400#
400	VL-400	84"	60"	54-3/16"	6-1/2"	28-3/8"	31-7/16"	16"	16"	82-1/4"	55-1/2"	1610#
500	VL-500	84"	60"	60-3/16"	6-1/2"	32-3/8"	27-7/16"	18"	18"	82-1/4"	55-1/2"	1782#
600	VL-600	90"	62"	66-3/16"	6-1/2"	30-3/8"	31-7/16"	22"	22"	88-1/4"	57-1/2"	1838#

NOTE: For optional lift lug add -L to part number



OPTIONAL LIFT LUG INSTALLATION
(2) LUGS PER CHANNEL



Each "T" Shaped Reservoir Includes:

1. (1) Oil Level & Temp. Gage
2. (1) Filler Breather
3. (1) Hinged Cover with gasket
4. (1) 3/4" NPT Drain
5. (2) T-Handles (3) for 300 gallon and up
6. Baffle with cutout for circulation
7. Exterior of reservoir prime painted
8. Interior of reservoir coated with rust preventive oil
9. 100 gallon to 400 gallon include (1) door prop (not shown)

Sight Gage

- 10 to 200 gallon - 5" sight gage (ALG5T)
- 300 Gallon and up - 10" sight gage (ALG10T)

Filler Breather

Bayonet Style - 40 micron (5201)

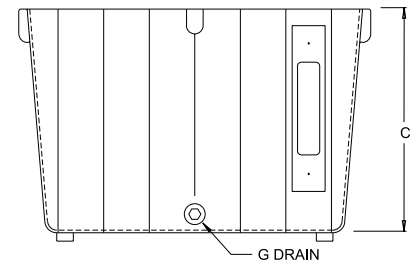
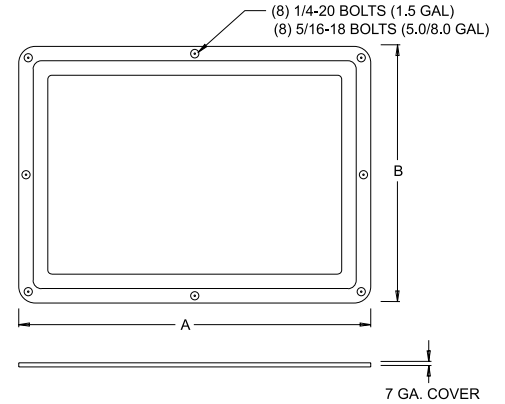
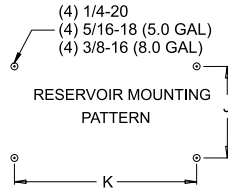
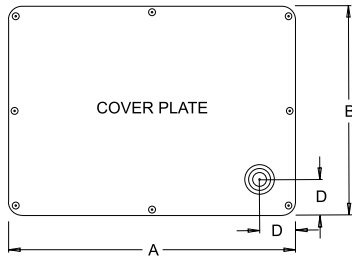
CAPACITY GALLONS	VESCOR PART NUMBER	TANK DIMENSIONS (INCHES)										SHIPPING WEIGHT
		A	B	C	D	E	F	G	H	MOUNTING CENTERS		
										D1 ±1/8"	D2 ±1/8"	
10	VLT-10	24"	35-1/4"	23-7/8"	6-3/16"	11-1/8"	12-1/16"	11"	N/A	22-1/4"	30-7/8"	178#
20	VLT-20	30"	40-5/8"	25-7/8"	6-3/16"	13-1/2"	13-9/16"	12"	N/A	28-1/4"	36-1/4"	220#
30	VLT-30	36"	46-5/8"	29-7/8"	6-3/16"	13-3/4"	16-7/16"	12"	N/A	34-1/4"	42-1/4"	291#
45	VLT-45	54"	48-5/8"	29-7/8"	6-3/16"	13-3/4"	17-7/16"	12"	12"	52-1/4"	44-1/4"	408#
60	VLT-60	48"	58"	35-7/8"	6-3/16"	16-3/4"	20-5/8"	16"	N/A	46-1/4"	53-5/8"	455#
80	VLT-80	66"	61-1/8"	36-1/16"	6-3/8"	16-3/8"	22-3/8"	16"	16"	64-1/4"	56-3/8"	887#
100	VLT-100	60"	66-1/8"	39-1/16"	6-3/8"	19-3/8"	23-3/8"	16"	N/A	58-1/4"	61-3/8"	944#
120	VLT-120	72"	68-1/8"	39-1/16"	6-3/8"	19-3/8"	24-3/8"	16"	16"	70-1/4"	63-3/8"	1130#
150	VLT-150	72"	76-1/8"	39-1/16"	6-3/8"	25-3/8"	25-3/8"	16"	N/A	70-1/4"	71-3/8"	1228#
200	VLT-200	84"	78-1/8"	42-1/16"	6-3/8"	25-3/8"	26-3/8"	16"	16"	82-1/4"	73-3/8"	1470#
300	VLT-300	84"	77-3/4"	54-3/16"	6-1/2"	25-3/8"	26-3/16"	16"	16"	82-1/4"	73-1/4"	1839#
400	VLT-400	84"	91"	54-3/16"	6-1/2"	28-3/8"	31-3/8"	16"	16"	82-1/4"	86-1/2"	2056#

For optional lift lugs add -L to part number



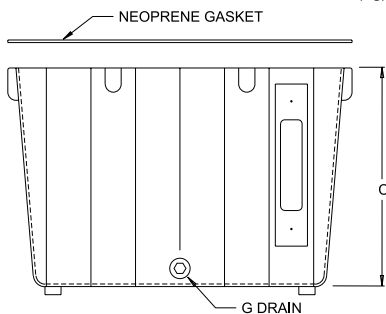
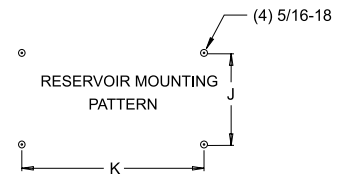
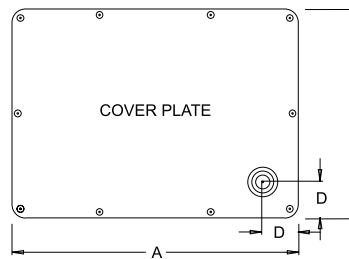
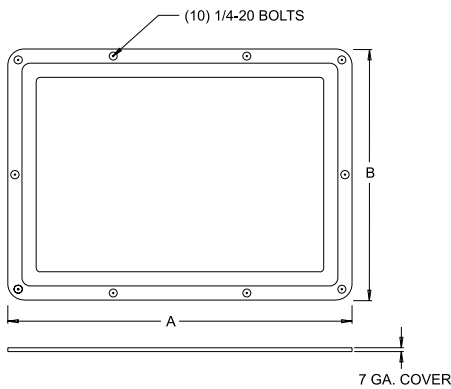
VESCOR® Aluminum Reservoirs

- Suitable for General Hydraulic Applications
- Drain Plug included on all sizes
- Vescor Guarantees 100% Leak Free
- Readily Available from Stock
- Tank Material – Cast Aluminum
- Cover Material – Steel



VESCOR PART NUMBER	CAPACITY		DIMENSIONS						
	GALLONS	LITERS	A	B	C	D	G BSPP	J	K
63705	1.5	6.50	10.25	8.66	6.69	1.25	3/8"	6.30	
7.87									
63707	5.0	20.00	14.41	11.34	9.65	1.25	1/2"	7.56	10.63

Each Aluminum Reservoir Includes: (1) Steel Cover Plate, (1) Mini Breather (3/4" NPT)
 (1) Cover Gasket, (1) Set Cover Mounting Hardware
 (1) Oil Level & Temp. Gage, (1) Drain Plug



VESCOR PART NUMBER	CAPACITY		DIMENSIONS						
	GALLONS	LITER	A	B	C	D	G BSPP	J	K
63706	3	12	12.20	9.44	8.46	1.25	3/8"	6.10	8.86

Each Aluminum Reservoir Includes: (1) Steel Cover Plate, (1) Mini Breather (3/4" NPT)
 (1) Cover Gasket, (1) Set Cover Mounting Hardware
 (1) Oil Level & Temp. Gage, (1) Drain Plug



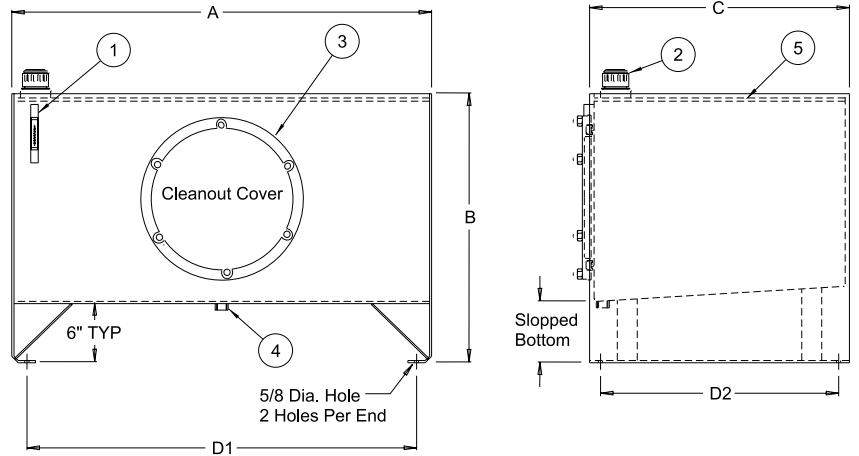
D.I.N. TYPE RESERVOIRS STYLE 1



Each D.I.N. Type Reservoir Style 1 includes:

1. (1) Oil Level & Temp. Gage
2. (1) Riser with Filler Breather
3. (1) DIN Type Endcover, Gasket and Mounting Hardware
4. SAE Drain with plug
5. Recessed Top (Drip Tray)
6. Exterior of reservoir prime painted
7. Interior of reservoir coated with rust preventive oil

Filler Breather: Bayonet Style - 40 micron (5201)



CAPACITY		VESCOR PART NUMBER	SIGHT GAGE (MTG. CTRS.)	TANK DIMENSIONS (INCHES)					CLEANOUT COVER	SHIP WEIGHT
GALLONS	LITERS			A LENGTH	B HEIGHT	C WIDTH	D1 MTG. CTRS.	D2 MTG. CTRS.		

499XXX SERIES ARE HEAVY DUTY RESERVOIRS

20	76	49920	5"	24-3/8"	21"	18"	21-3/4"	15-1/2"	324	128#
30	114	49930	5"	30-3/8"	21-1/2"	20-3/4"	27"	18-1/4"	324	170#
40	151	49940	5"	36-3/8"	22-3/4"	20-3/4"	33"	18-1/4"	324	231#
60	227	49960	5"	42-3/8"	24-1/4"	24"	39"	21-1/2"	324	301#
80	303	49980	5"	42-3/8"	25-3/8"	30"	39"	27-1/2"	324	371#
100	379	499100	10"	42-3/8"	29-1/4"	30"	39"	27-1/2"	449	400#
120	454	499120	10"	48-1/2"	30-1/4"	30"	45"	27-1/2"	449	554#
150	568	499150	10"	60-1/2"	30-1/4"	30"	57"	27-1/2"	449	665#
200	757	499200	10"	72-3/4"	29-13/16"	36"	69"	33-1/2"	449	973#
300	1136	499300	10"	72-3/4"	38-11/16"	36"	69"	33-1/2"	449	1142#
400	1514	499400	10"	84-3/4"	43-3/16"	36"	80-3/4"	33-1/2"	449	1495#
500	1892	499500	10"	84-3/4"	44-3/4"	42"	80-3/4"	39-1/2"	449	1701#

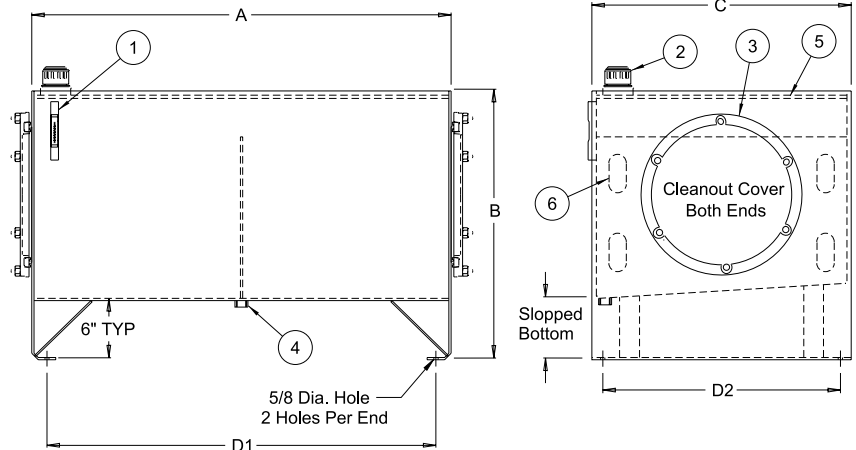
422XXX SERIES ARE LIGHT DUTY RESERVOIRS

20	76	42220	5"	30"	20-1/2"	18"	27"	15-1/2"	324	120#
35	132	42235	5"	35"	21-1/4"	24"	32"	21-1/2"	324	168#
60	227	42260	5"	42"	22-3/4"	26"	39"	23-1/2"	324	212#
80	303	42280	5"	48"	24-3/4"	27"	45"	24-1/2"	324	252#
100	379	422100	10"	57"	24-3/4"	30"	54"	27-1/2"	449	314#
120	454	422120	10"	60"	25-3/4"	30"	57"	27-1/2"	449	450#
150	568	422150	10"	60"	29-3/4"	30"	57"	27-1/2"	449	481#
200	757	422200	10"	72"	28-1/2"	36"	69"	33-1/2"	449	696#
300	1136	422300	10"	72"	38-1/2"	36"	69"	33-1/2"	449	903#
400	1514	422400	10"	84-3/4"	43-1/4"	36"	81-3/4"	33-1/2"	449	1248#
500	1892	422500	10"	84-3/4"	44-3/4"	42"	81-3/4"	39-1/2"	449	1440#



Each D.I.N. Type Reservoir Style 2 includes:

1. (1) Oil Level & Temp. Gage
2. (1) Riser with Filler Breather
3. (2) DIN Type Endcovers, Gaskets and Mounting Hardware
4. SAE Drain with plug
5. Recessed Top (Drip Tray)
6. (1) Baffle with cutouts for circulation
7. Exterior of reservoir prime painted
8. Interior of reservoir coated with rust preventive oil



Filler Breather: Bayonet Style - 40 micron (5201)

CAPACITY/VECOR SIGHT		PART NUMBER	GAGE MTG. CTRS.	TANK DIMENSIONS (INCHES)					CLEANOUT COVER	SHIP WEIGHT
GALLONS	LITERS			A LENGTH	B HEIGHT	C WIDTH	D ₁ MTG. CTRS.	D ₂ MTG. CTRS.		

599XXX SERIES ARE HEAVY DUTY RESERVOIRS

20	76	59920	5"	24-3/8"	21"	18"	21-3/4"	15-1/2"	324	141#
30	114	59930	5"	30-3/8"	21-1/2"	20-3/4"	27"	18-1/4"	324	185#
40	151	59940	5"	36-3/8"	22-3/4"	20-3/4"	33"	18-1/4"	324	248#
60	227	59960	5"	42-3/8"	24-1/4"	24"	39"	21-1/2"	324	321#
80	303	59980	5"	42-3/8"	25-3/8"	30"	39"	27-1/2"	324	398#
100	379	599100	10"	42-3/8"	29-1/4"	30"	39"	27-1/2"	449	430#
120	454	599120	10"	48-1/2"	30-1/4"	30"	45"	27-1/2"	449	584#
150	568	599150	10"	60-1/2"	30-1/4"	30"	57"	27-1/2"	449	695#
200	757	599200	10"	72-3/4"	29-13/16"	36"	69"	33-1/2"	449	1029#
300	1136	599300	10"	72-3/4"	38-11/16"	36"	69"	33-1/2"	449	1213#
400	1514	599400	10"	84-3/4"	43-3/16"	36"	80-3/4"	33-1/2"	449	1575#
500	1892	599500	10"	84-3/4"	44-3/4"	42"	80-3/4"	39-1/2"	449	1798#

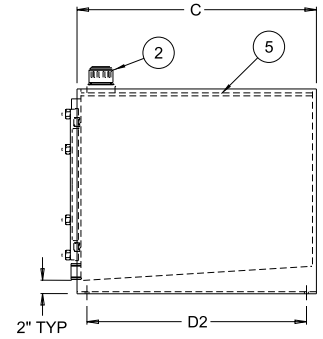
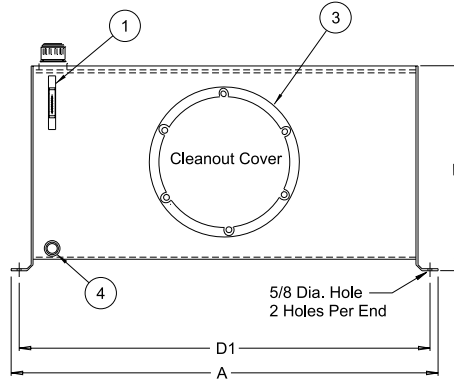
522XXX SERIES ARE LIGHT DUTY RESERVOIRS

20	76	52220	5"	30"	20-1/2"	18"	27"	15-1/2"	324	136#
35	132	52235	5"	35"	21-1/4"	24"	32"	21-1/2"	324	187#
60	227	52260	5"	42"	22-3/4"	26"	39"	23-1/2"	324	235#
80	303	52280	5"	48"	24-3/4"	27"	45"	24-1/2"	324	277#
100	379	522100	10"	57"	24-3/4"	30"	54"	27-1/2"	449	340#
120	454	522120	10"	60"	25-3/4"	30"	57"	27-1/2"	449	480#
150	568	522150	10"	60"	29-3/4"	30"	57"	27-1/2"	449	526#
200	757	522200	10"	72"	28-1/2"	36"	69"	33-1/2"	449	748#
300	1136	522300	10"	72"	38-1/2"	36"	69"	33-1/2"	449	974#
400	1514	522400	10"	84-3/4"	43-1/4"	36"	81-3/4"	33-1/2"	449	1338#
500	1892	522500	10"	84-3/4"	44-3/4"	42"	81-3/4"	39-1/2"	449	1536#



Each D.I.N. Type Reservoir Style 3 Includes:

1. (1) Oil Level & Temp. Gage
2. (1) Riser with Filler Breather
3. (1) DIN Type Endcover, Gasket and Mounting Hardware
4. SAE Drain with plug
5. Recessed Top (Drip Tray)
6. Exterior of reservoir prime painted
7. Interior of reservoir coated with rust preventive oil



Filler Breather: Bayonet Style - 40 micron (5201)

CAPACITY		VESCOR PART NUMBER	SIGHT GAGE (MTG. CTRS.)	TANK DIMENSIONS (INCHES)					CLEANOUT COVER	SHIP WEIGHT
GALLONS	LITERS			A LENGTH	B HEIGHT	C WIDTH	D1 MTG. CTRS.	D2 MTG. CTRS.		

699XXX SERIES ARE HEAVY DUTY RESERVOIRS

20	76	69920	5"	28"	17"	18"	26-1/2"	15-1/2"	324	118#
30	114	69930	5"	34"	17-7/16"	20-3/4"	32-1/2"	18-1/4"	324	158#
40	151	69940	5"	40"	18-3/4"	20-3/4"	38-1/2"	18-1/4"	324	190#
60	227	69960	5"	46"	20-1/4"	24"	44-1/2"	21-1/2"	324	219#
80	303	69980	5"	46"	21-3/8"	30"	44-1/2"	27-1/2"	324	287#
100	379	699100	10"	46"	25-1/4"	30"	44-1/2"	27-1/2"	449	348#
120	454	699120	10"	52"	26-1/4"	30"	50-1/2"	27-1/2"	449	530#
150	568	699150	10"	64"	26-1/4"	30"	62-1/2"	27-1/2"	449	633#
200	757	699200	10"	76"	25-13/16"	36"	74-1/2"	33-1/2"	449	930#

622XXX SERIES ARE LIGHT DUTY RESERVOIRS

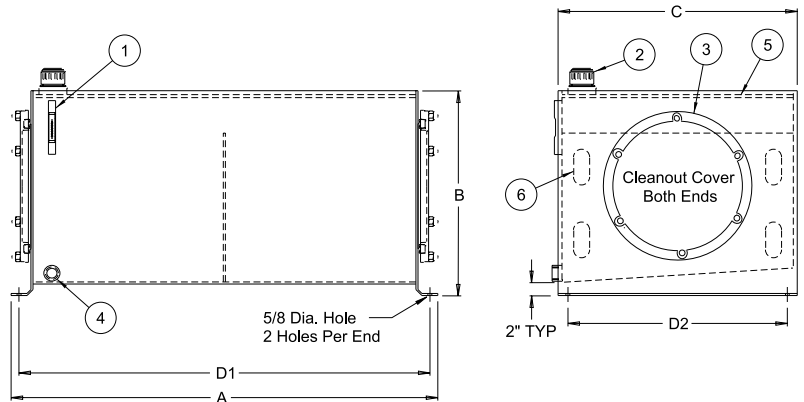
20	76	62220	5"	34-1/4"	16"	18"	32-3/4"	15-1/2"	324	91#
35	132	62235	5"	39-1/4"	16-3/4"	24"	37-3/4"	21-1/2"	324	160#
60	227	62260	5"	46-1/8"	18-1/4"	26"	44-5/8"	23-1/2"	324	208#
80	303	62280	5"	52-1/8"	20-1/4"	27"	50-5/8"	24-1/2"	324	254#
100	379	622100	10"	61-1/8"	20-1/4"	30"	59-5/8"	27-1/2"	449	261#
120	454	622120	10"	64-1/8"	21-1/4"	30"	62-5/8"	27-1/2"	449	416#
150	568	622150	10"	64-1/8"	25-1/4"	30"	62-5/8"	27-1/2"	449	554#
200	757	622200	10"	76"	24"	36"	74-1/2"	33-1/2"	449	850#



Each D.I.N. Type Reservoir Style 4 includes:

1. (1) Oil Level and Temp. Gage
2. (1) Riser with Filler Breather
3. (2) DIN Type Endcovers, Gaskets and Mounting Hardware
4. SAE Drain with plug
5. Recessed Top (Drip Tray)
6. (1) Baffle with cutouts for circulation
7. Exterior of reservoir prime painted
8. Interior of reservoir coated with rust preventive

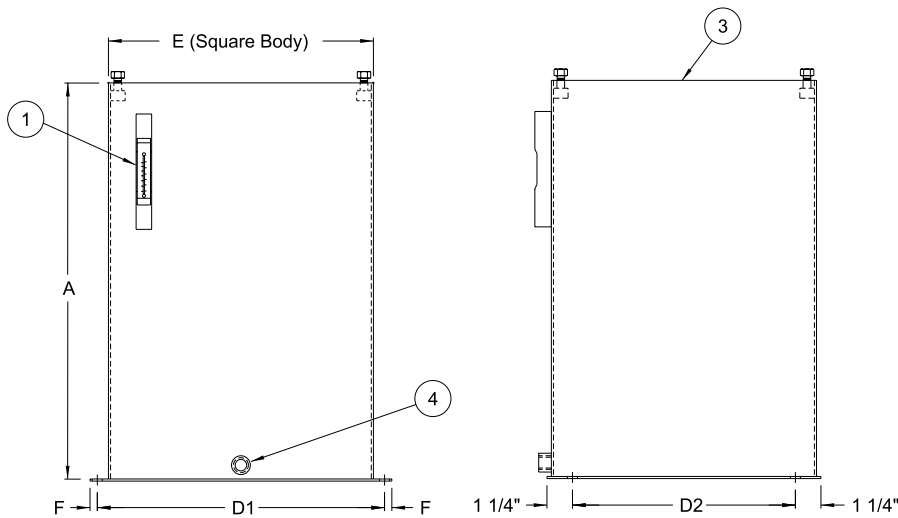
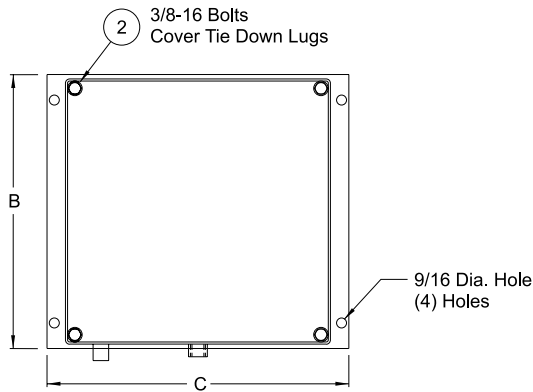
Filler Breather: Bayonet Style - 40 micron (5201)



CAPACITY		VESCOR PART NUMBER	SIGHT GAGE (MTG. CTRS.)	TANK DIMENSIONS (INCHES)					CLEANOUT COVER	SHIP WEIGHT
GALLONS	LITERS			A LENGTH	B HEIGHT	C WIDTH	D ₁ MTG. CTRS.	D ₂ MTG. CTRS.		
799XXX SERIES ARE HEAVY DUTY RESERVOIRS										
20	76	79920	5"	28"	17"	18"	26-1/2"	15-1/2"	324	125#
30	114	79930	5"	34"	17-7/16"	20-3/4"	32-1/2"	18-1/4"	324	166#
40	151	79940	5"	40"	18-3/4"	20-3/4"	38-1/2"	18-1/4"	324	207#
60	227	79960	5"	46"	20-1/4"	24"	44-1/2"	21-1/2"	324	240#
80	303	79980	5"	46"	21-3/8"	30"	44-1/2"	27-1/2"	324	314#
100	379	799100	10"	46"	25-1/4"	30"	44-1/2"	27-1/2"	449	376#
120	454	799120	10"	52"	26-1/4"	30"	50-1/2"	27-1/2"	449	570#
150	568	799150	10"	64"	26-1/4"	30"	62-1/2"	27-1/2"	449	673#
200	757	799200	10"	76"	25-13/16"	36"	74-1/2"	33-1/2"	449	987#
722XXX SERIES ARE LIGHT DUTY RESERVOIRS										
20	76	72220	5"	34-1/4"	16"	18"	32-3/4"	15-1/2"	324	97#
35	132	72235	5"	39-1/4"	16-3/4"	24"	37-3/4"	21-1/2"	324	169#
60	227	72260	5"	46-1/8"	18-1/4"	26"	44-5/8"	23-1/2"	324	219#
80	303	72280	5"	52-1/8"	20-1/4"	27"	50-5/8"	24-1/2"	324	269#
100	379	722100	10"	61-1/8"	20-1/4"	30"	59-5/8"	27-1/2"	449	280#
120	454	722120	10"	64-1/8"	21-1/4"	30"	62-5/8"	27-1/2"	449	437#
150	568	722150	10"	64-1/8"	25-1/4"	30"	62-5/8"	27-1/2"	449	583#
200	757	722200	10"	76"	24"	36"	74-1/2"	33-1/2"	449	907#



VERTICAL NON-J.I.C. TYPE RESERVOIRS



Each Vertical Non-J.I.C. Reservoir includes:

1. (1) Oil Level & Temp. Gage
2. (4) Cover Mounting Bolts
3. Channel gasket for cover plate seal
4. 1/2" NPT Drain
5. Steel construction with customer choice of top
6. Exterior of reservoir prime painted
7. Interior of Reservoir coated with rust preventive oil

Sight Gage

5 to 30 gallon - 5" sight gage (ALG5T)

NOTE: Cover Plate ordered as separate item (see page 19)

CAPACITY GALLONS	VESCOR PART NUMBER	TANK DIMENSIONS (Inches)							SHIPPING WEIGHT
		A	B	C	MOUNTING CENTERS		E	F	
					D ₁ ±1/8"	D ₂ ±1/8"			
5	215145	10"	12-1/2"	14-1/2"	13-1/2"	10"	12"	1/2"	30#
10	215146	20"	12-1/2"	14-1/2"	13-1/2"	10"	12"	1/2"	45#
10	215147	12"	16-1/2"	19"	17-1/2"	14"	16"	3/4"	50#
20	215148	24"	16-1/2"	19"	17-1/2"	14"	16"	3/4"	66#
30	215149	36"	16-1/2"	19"	17-1/2"	14"	16"	3/4"	86#



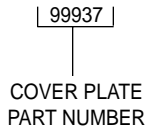
COVER PLATES



ORDERING INFORMATION

VESCOR Vertical Non-JIC Reservoirs allow you to choose the style cover plate for your individual needs. *Reservoir and Cover Plate must be ordered as separate items. Please use Part Number when ordering.*

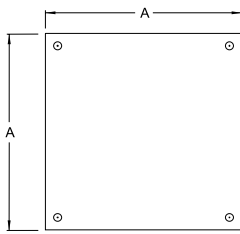
NOTE: Filler Breathers are included with cover plates only



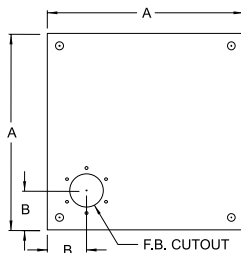
Example:
Cover Plate for 10 Gallon Non-JIC Reservoir (215147) with 56C/145TC Adapter Cutout (Style 1)

RESERVOIR PART NUMBER	STANDARD DIMENSIONS FOR VERTICAL TOPS				
	A (SQ)	B	C	D	E (ADAPTER CUTOUT)
215145	12-1/2"	2-1/2"	8-1/4"	5"	Cutout for 56C/145TC Adapter (Style 1, 1A, 1B)
215146					Cutout for 182TC/256TC Adapter (Style 7)
215147	18"	2-1/2"	9"	5-1/2"	Cutout for 56C/145TC Adapter (Style 1, 1A, 1B)
215148					Cutout for 182TC/256TC Adapter (Style 7)
215149			9"	6-1/4"	Cutout for 182TC/256TC Adapter (Style 6)

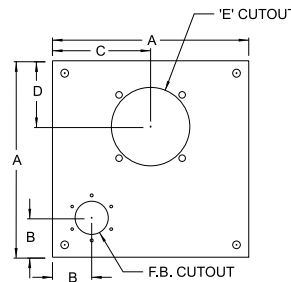
Series 1 Cover Plates (215145, 215146)



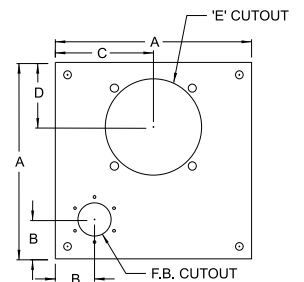
Blank Cover
VESCOR
Part Number 99920



Cover with
Filler Breather Cutout
Part Number 99923

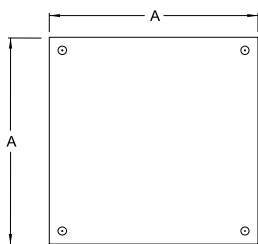


Cover with
Filler Breather Cutout and
56C/145TC Adapter Cutout
(Adapter Style 1, 1A, 1B)
Part Number 99926

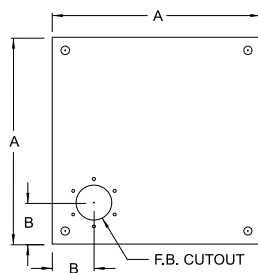


Cover with
Filler Breather Cutout and
182TC/256TC Adapter Cutout
(Adapter Style 7)
Part Number 99929

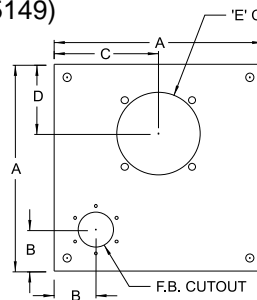
Series 2 Cover Plates (215147, 215148, 215149)



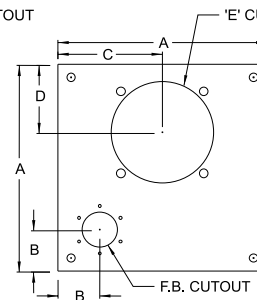
Blank Cover
VESCOR
Part Number 99931



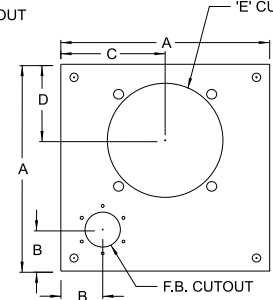
Cover with
Filler Breather Cutout
VESCOR Part Number 99934



Cover with
Filler Breather Cutout and
56C/145TC Adapter Cutout
(Adapter Style 1, 1A, 1B)
Part Number 99937



Cover with
Filler Breather Cutout and
182TC/256TC Adapter Cutout
(Adapter Style 7)
Part Number 99940

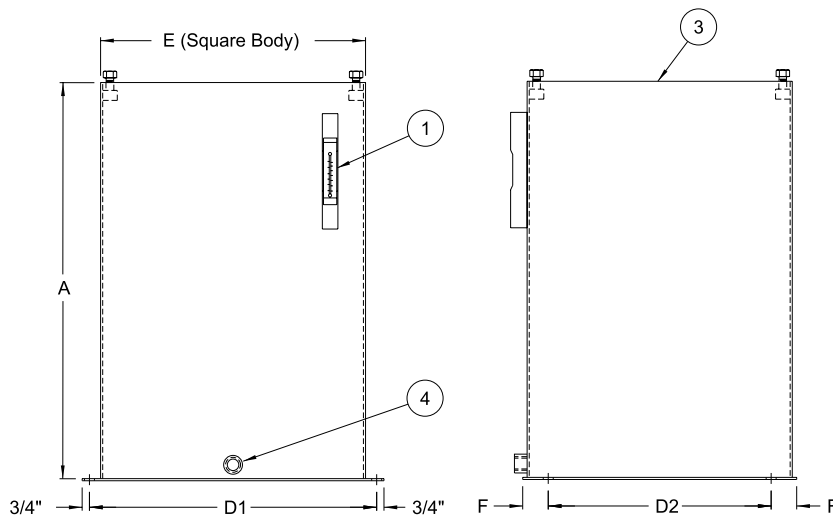
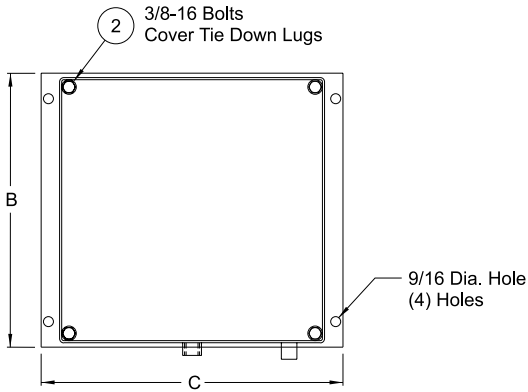


Cover with
Filler Breather Cutout and
182TC/256TC Adapter Cutout
(Adapter Style 6)
Part Number 99943

COVER PLATE PART NUMBER	DESCRIPTION	SERIES
99920	Blank Cover	1
99923	Cover with Filler Breather Cutout	1
99926	Cover with 56C/145TC Adapter Cutout	1
99929	Cover with 182C/256TC Adapter Cutout	1

COVER PLATE PART NUMBER	DESCRIPTION	SERIES
99931	Blank Cover	2
99934	Cover with Filler Breather Cutout	2
99937	Cover with 56C/145TC Adapter Cutout	2
99940	Cover with 182C/256TC Adapter Cutout	2
99943	Cover with 182C/256TC Vert. Adapter Cutout	2

NOTE: WITH VESCOR'S POLICY OF CONSTANTLY IMPROVING ITS PRODUCTS, SPECIFICATIONS ARE SUBJECT TO CHANGE WITHOUT NOTICE.



Each Vertical Non-J.I.C. Type Reservoir Includes:

1. (1) Oil Level & Temp. Gage
2. (4) Cover Mounting Bolts
3. Channel gasket for cover plate seal
4. 1/2" NPT Drain
5. Steel construction with customer choice of top
6. Outside of reservoir prime painted
7. Interior of reservoir coated with rust preventive oil

Sight Gage

10 to 40 gallon - 5" sight gage (ALG5T)

NOTE : Cover Plate ordered as separate item (see page 21)

CAPACITY GALLONS	VESCOR PART NUMBER	TANK DIMENSIONS (Inches)							SHIPPING WEIGHT
		A	B	C	MOUNTING CENTERS		E	F	
					D ₁ ±1/8"	D ₂ ±1/8"			
10	215173	15-1/2"	17-1/2"	19"	17-1/2"	14"	16"	1-3/4"	65#
20	215174	18-1/2"	18"	20-1/2"	19"	15"	17-1/2"	1-1/2"	80#
30	215175	26-1/2"	18"	20-1/2"	19"	15"	17-1/2"	1-1/2"	100#
40	215176	34-1/2"	18"	20-1/2"	19"	15"	17-1/2"	1-1/2"	120#

ORDERING INFORMATION

VESCOR Vertical Non-JIC Reservoirs allow you to choose the style cover plate for your individual needs. *Reservoir and Cover Plate must be ordered as separate items. Please use Part Number when ordering.*

NOTE: Filler Breathers are included with cover plates only

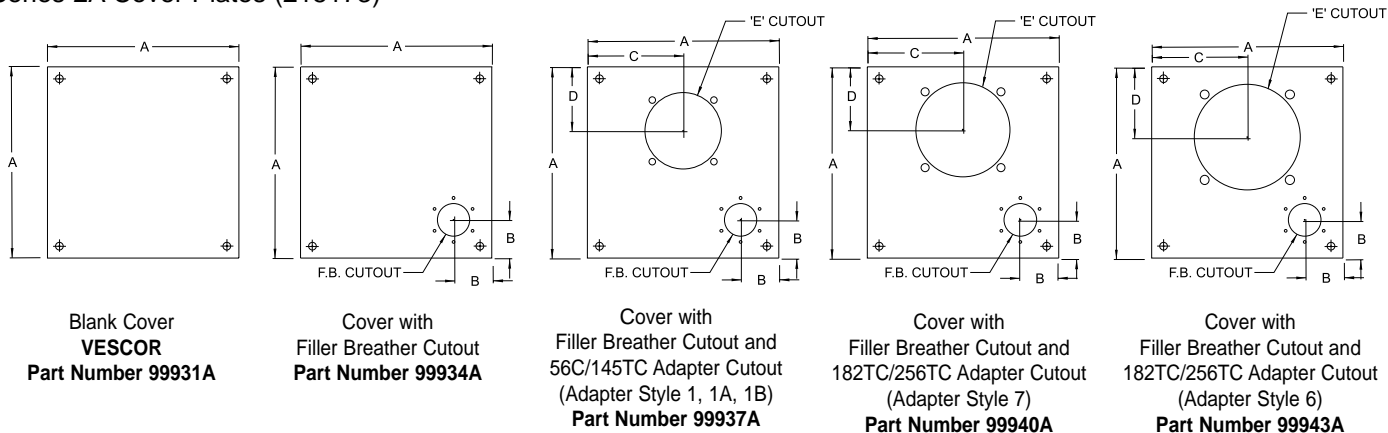
[99937A]

COVER PLATE
PART NUMBER

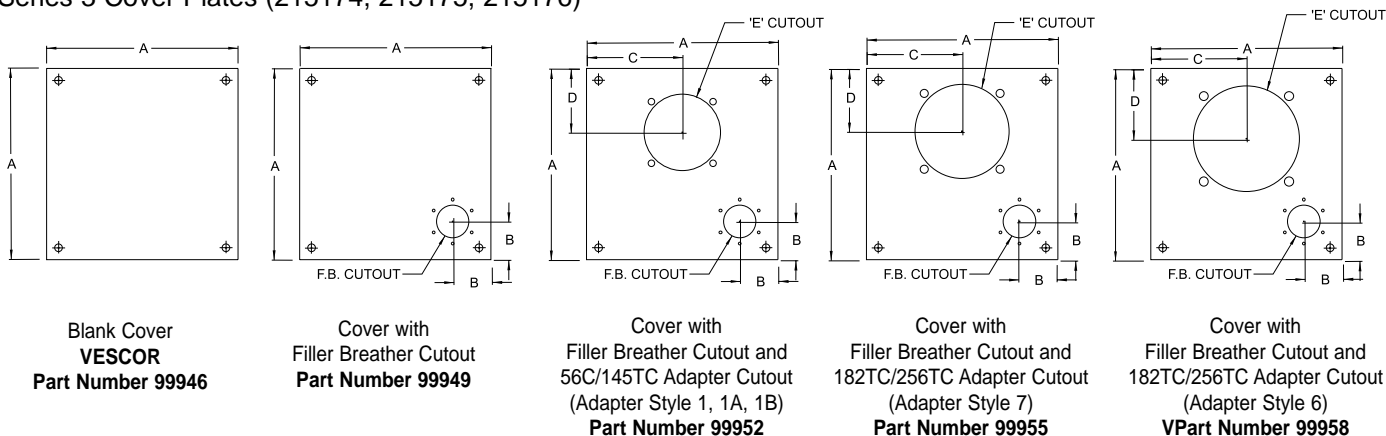
Example:
Cover Plate for 10 Gallon Non-JIC Reservoir
(215173) with 56C/145TC Adapter Cutout (Style 1)

RESERVOIR PART NUMBER	STANDARD DIMENSIONS FOR VERTICAL TOPS				
	A (SQ)	B	C	D	E (ADAPTER CUTOUT)
215173	16-1/2"	2-1/2"	8-1/4"	5-1/2"	Cutout for 56C/145TC Adapter (Style 1, 1A, 1B) Cutout for 182TC/256TC Adapter (Style 7)
215174	18"	2-1/2"	9"	5-1/2"	Cutout for 56C/145TC Adapter (Style 1, 1A, 1B)
215175			9"	5-1/2"	Cutout for 182TC/256TC Adapter (Style 7)
215176			9"	6-1/4"	Cutout for 182TC/256TC Adapter (Style 6)

Series 2A Cover Plates (215173)



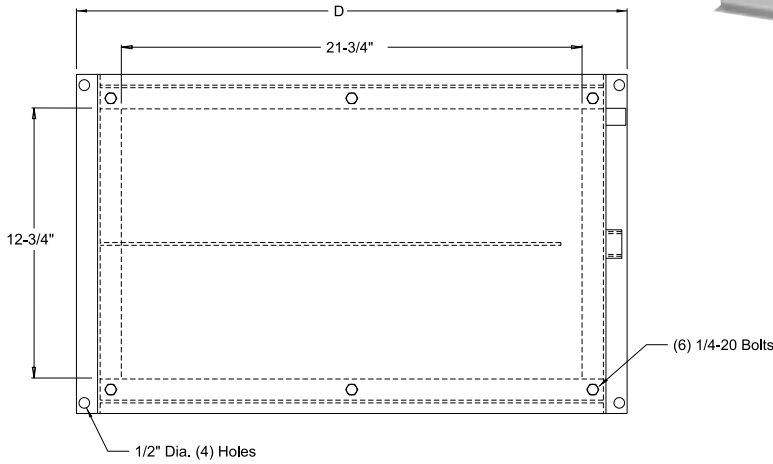
Series 3 Cover Plates (215174, 215175, 215176)



COVER PLATE PART NUMBER	DESCRIPTION	SERIES
99931A	Blank Cover	2A
99934A	Cover with Filler Breather Cutout	2A
99237A	Cover with 56C/145TC Adapter Cutout	2A
99940A	Cover with 182C/256TC Adapter Cutout	2A
99943A	Cover with 182C/256TC Adapter Cutout	2A

COVER PLATE PART NUMBER	DESCRIPTION	SERIES
99946	Blank Cover	3
99949	Cover with Filler Breather Cutout	3
99952	Cover with 56C/145TC Adapter Cutout	3
99955	Cover with 182C/256TC Adapter Cutout	3
99958	Cover with 182C/256TC Vert. Adapter Cutout	3

WITH REMOVABLE TOP



Each Removable Top Horizontal Non-J.I.C. Reservoir Includes:

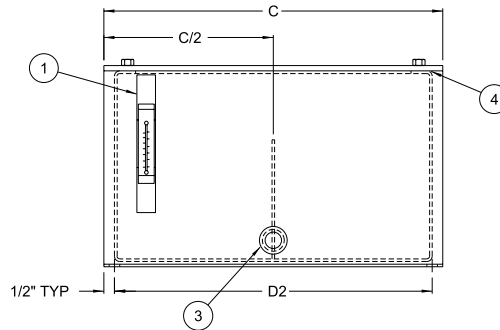
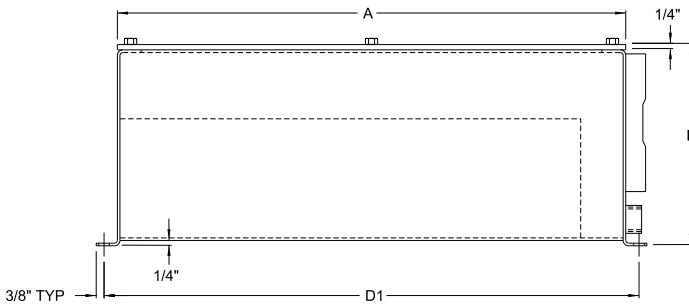
1. (1) Oil Level & Temp. Gage
2. (1) Filler Breather (no hole provided)
3. (1) 3/4" NPT Drain
4. Neoprene Gasket for top plate seal
5. Steel construction with removable top
6. Exterior of reservoir prime painted
7. Interior of reservoir coated with a rust preventive oil

Sight Gage

10 to 30 gallon - 5" sight gage (ALG5T)

Filler Breather

Bayonet Style - 40 micron (5201)



CAPACITY GALLONS	VESCOR PART NUMBER	TANK DIMENSIONS (Inches)						SHIPPING WEIGHT
		A	B	C	D	MOUNTING CENTERS		
						D1 ±1/8"	D2 ±1/8"	
10	5300	24"	9-1/2"	16"	26"	25-1/4"	15"	70#
20	5301	24"	15-1/2"	16"	26"	25-1/4"	15"	80#
30	5302	24"	21-1/2"	16"	26"	25-1/4"	15"	110#



HORIZONTAL NON-JIC TYPE RESERVOIRS



WELDED TOP

ORDERING INFORMATION

VESCOR Horizontal Non-JIC Reservoirs can be ordered with installed In-Tank Water Cooler (TMWC0001-*)
Please use Part Number when ordering.

5140	—	001P
RESERVOIR PART NUMBER		001P = In-Tank Cooler (NPT Connections) 001S = In-Tank Cooler (SAE Connections) 001M = In-Tank Cooler (Metric Connections) OMIT - No In-Tank Cooler (6" Cleanout Cover)



Each Horizontal Non-J.I.C. Reservoirs includes:

- 1 (1) Oil Level & Temp. Gage
- 2 (1) Filler Breather (hole not provided)
- *3 (2) 6" Cleanout Covers or In-Tank Oil Cooler
- 4 Baffle with cutout for circulation
- 5 (1) 3/4" NPT Drain
- 6 Steel construction with welded top
- 7 Exterior of reservoir prime painted
- 8 Interior of reservoir coated with rust preventive oil

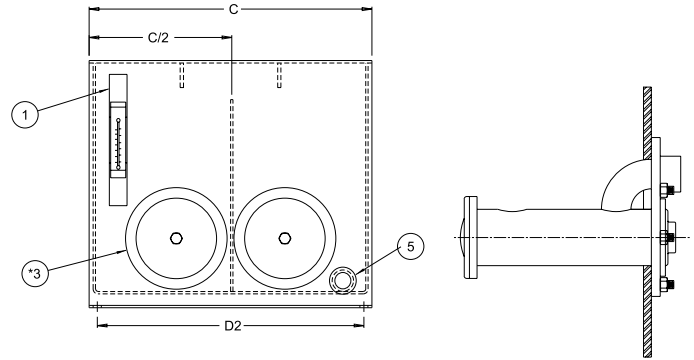
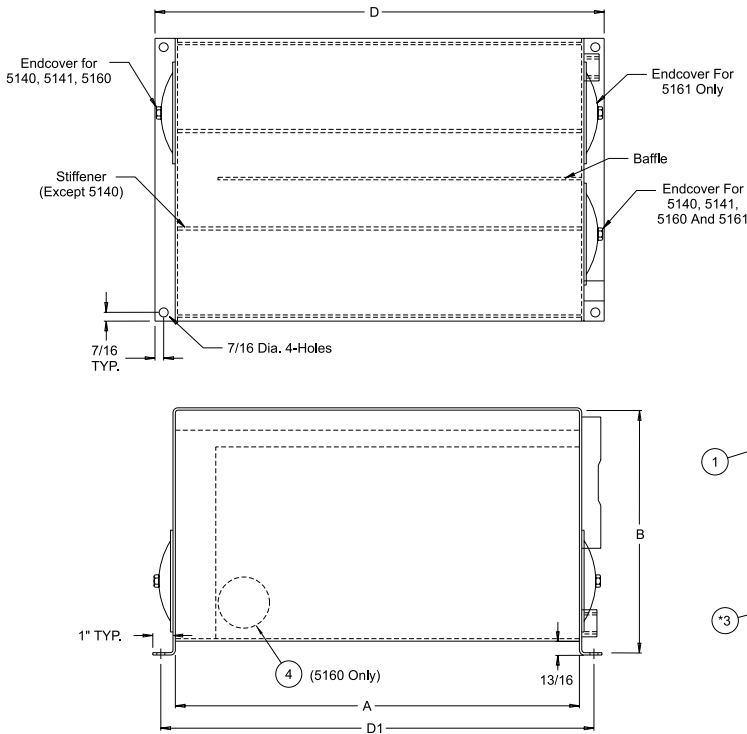
Sight Gage

10 to 40 gallon - 5" sight gage (ALG5T)

Filler Breather

Bayonet Style - 40 micron (5201)

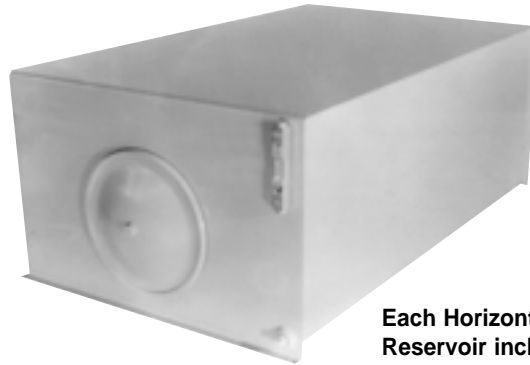
* NOTE: In-Tank Oil Cooler is installed in place of (1) 6" cleanout cover



Typical In-Tank Oil Cooler Installation

CAPACITY GALLONS	VESCOR PART NUMBER	TANK DIMENSIONS (Inches)						SHIPPING WEIGHT
		A	B	C	D	MOUNTING CENTERS		
						D1 ±1/8"	D2 ±1/8"	
10	5140	20"	12"	14"	22-1/4"	21-3/8"	13-1/8"	50#
20	5141	24"	14"	18"	26-1/4"	25-3/8"	17-1/8"	80#
30	5160	36"	14"	18"	38-1/4"	37-3/8"	17-1/8"	100#
40	5161	36"	14"	24"	38-1/4"	37-3/8"	23-1/8"	130#

WELDED TOP

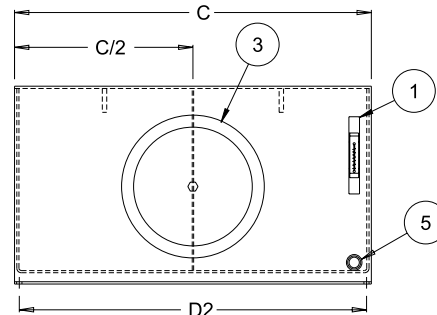
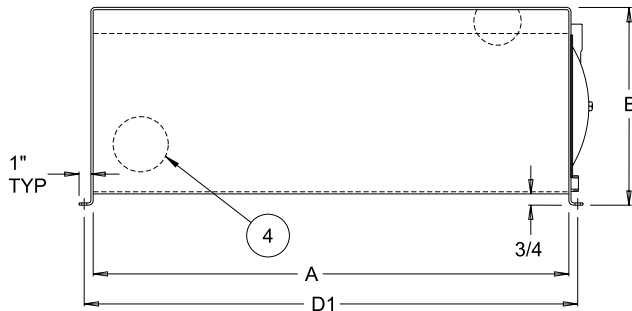
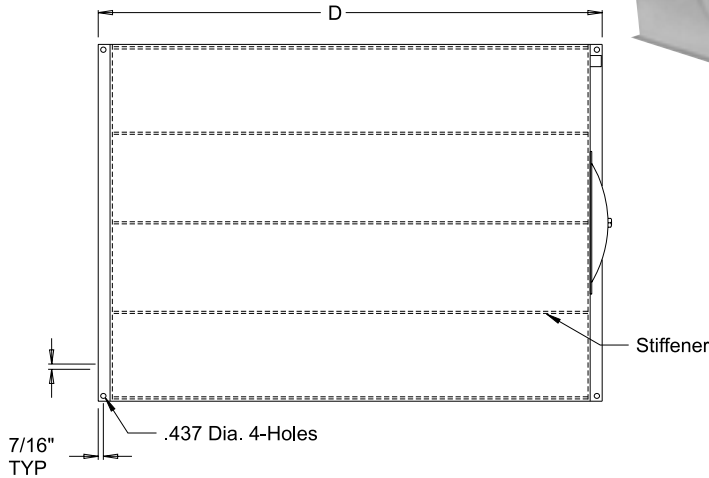


Each Horizontal Non-J.I.C. Reservoir includes:

1. (1) Oil Level & Temp. Gage
2. (1) Filler Breather (hole not provided)
3. (1) 12" Cleanout Cover
4. Baffle with cutouts for circulation
5. (1) 3/4" NPT Drain
6. Steel construction with welded top
7. Exterior of reservoir prime painted
8. Interior of reservoir coated with rust preventive oil

Sight Gage

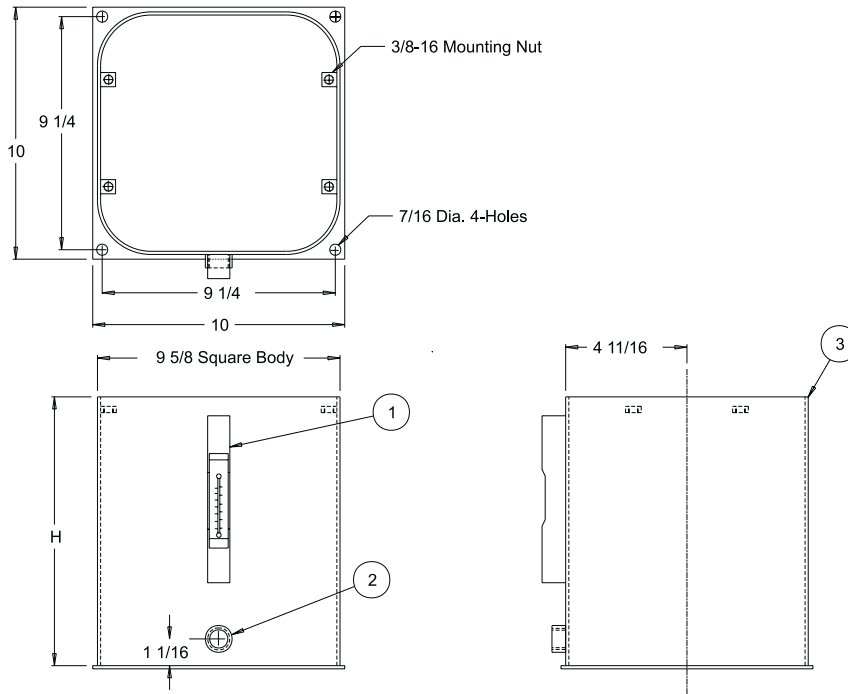
60 to 100 gallon - 5" sight gage (ALG5T)



CAPACITY GALLONS	VESCOR PART NUMBER	TANK DIMENSIONS (Inches)						SHIPPING WEIGHT
		A	B	C	D	MOUNTING CENTERS		
						D ₁ ±1/8"	D ₂ ±1/8"	
60	5162	40"	16-5/8"	30"	42-3/8"	41-1/2"	29-1/8"	270#
80	5163	48"	16-5/8"	30"	50-3/8"	49-1/2"	29-1/8"	320#
100	5164	52"	16-5/8"	36"	54-3/8"	53-1/2"	35-1/8"	410#
100	5165	48"	19"	30"	50-3/8"	49-1/2"	29-1/8"	410#



2, 3 and 5 GALLON CAPACITY



Each Vari-Pak Reservoir Includes:

1. (1) Oil Level & Temp. Gage
2. 3/4" NPT Drain
3. Neoprene Gasket for Top Plate Seal
4. Steel Construction with Customer Choice of Top Plate
5. Exterior of reservoir prime painted
6. Interior of reservoir coated with rust preventive oil

Sight Gage

- 2 gallon - 3" sight gage (ALG3T)
- 3 to 5 gallon - 5" sight gage (ALG5T)

NOTE: Cover Plate ordered as separate item
(see below)

VESCOR PART NUMBER	H (HEIGHT)	CAPACITY	SHIPPING WEIGHT
29902	8"	2 GALLONS	18#
29903	12"	3 GALLONS	23#
29905	16"	5 GALLONS	28#

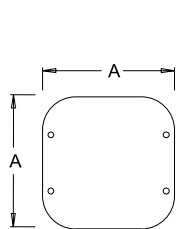
COVER PLATES

Vescor Vari-Pak Reservoirs allow you to choose the style cover plate for your individual needs.

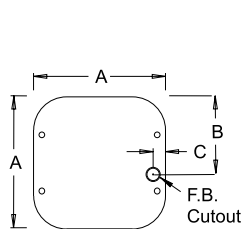
Reservoir and Cover Plate must be ordered as separate items. Please use part number when ordering.

COVER PART NUMBER	A (SQ)	B	C	D	E	F (ADAPTER CUTOUT)
99908 99909* 99910* 99911*	10-1/8	5-15/16	1-3/16	5-1/16	3-21/32	cutout for 56/145TC adapter (style 1, 1A, 1B)
99907	10-1/8	N/A	N/A	5-1/16	5-1/16	cutout for 182/256TC adapter only (style 7)

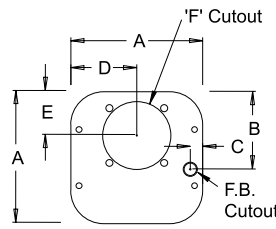
*includes (1) PMB07-10 Mini Breather



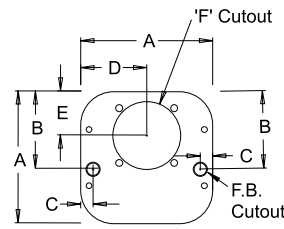
Style A Cover Plate
Blank Cover
Part Number 99908



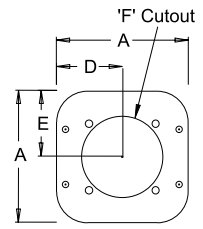
Style B Cover Plate
with Breather Cutout
Part Number 99909



Style C Cover Plate
with Breather Cutout and
56C/145TC Adapter Cutout
Part Number 99910



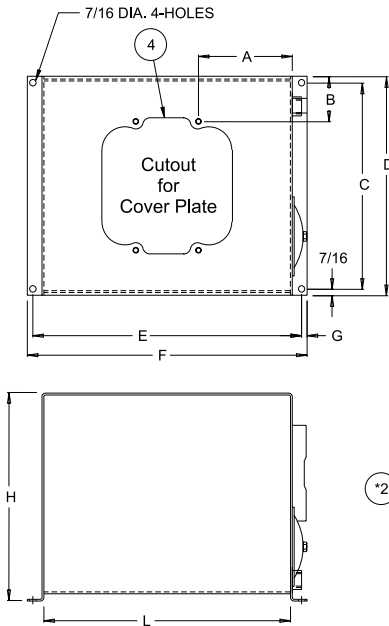
Style D Cover Plate
with Breather Cutout and
56C/145TC Adapter Cutout
1/2" NPT Connection
Part Number 99911



Style E Cover Plate
182/256TC Adapter Cutout
Part Number 99907



8, 10 and 14 GALLON CAPACITY



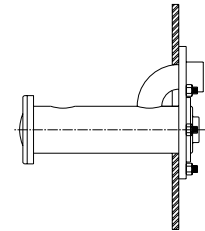
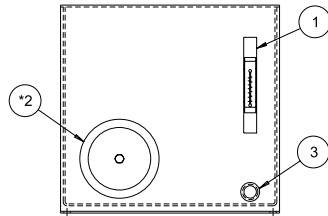
Each Vari-Pak Reservoir Includes:

1. (1) Oil Level & Temp. Gage
- * 2. 6" Cleanout Cover or In-Tank Oil Cooler
*(NOTE: In-Tank Oil cooler is installed in place of 6" cleanout cover)
3. 3/4" NPT Drain
4. Neoprene Gasket for Top Plate Seal
5. Steel Construction with Customer Choice of Top Plate
6. Exterior of reservoir prime painted
7. Interior of reservoir coated with rust preventive oil

Sight Gage

8 to 14 gallon - 5" sight gage (ALG5T)

NOTE: Cover Plate ordered as separate item
(see below)



Typical In-Tank Oil Cooler Installation

ORDERING INFORMATION: VESCOR Vari-Pak Reservoirs can be ordered with installed In-Tank Water Cooler (TMWC0001-*) Please use Part Number when ordering.

29908	-	001P
RESERVOIR PART NUMBER		001P = In-Tank Cooler (NPT Connections) 001S = In-Tank Cooler (SAE Connections) 001M = In-Tank Cooler (Metric Connections)

CAPACITY GALLONS	VESCOR PART NUMBER	TANK DIMENSIONS - INCHES									SHIP WEIGHT
		A	B	C	D	E	F	G	H	L	
8	29908	5"	1-5/8"	11-1/8"	12"	13-3/8"	14-1/4"	7/16"	18-1/8"	12"	45#
10	29910	6-3/8"	3-1/16"	14"	14-7/8"	18-1/4"	19"	3/8"	14-1/8"	16-3/4"	57#
14	29914	7"	1-5/8"	11-1/8"	12"	19-3/8"	20-1/4"	7/16"	20-1/8"	18"	65#

COVER PLATES

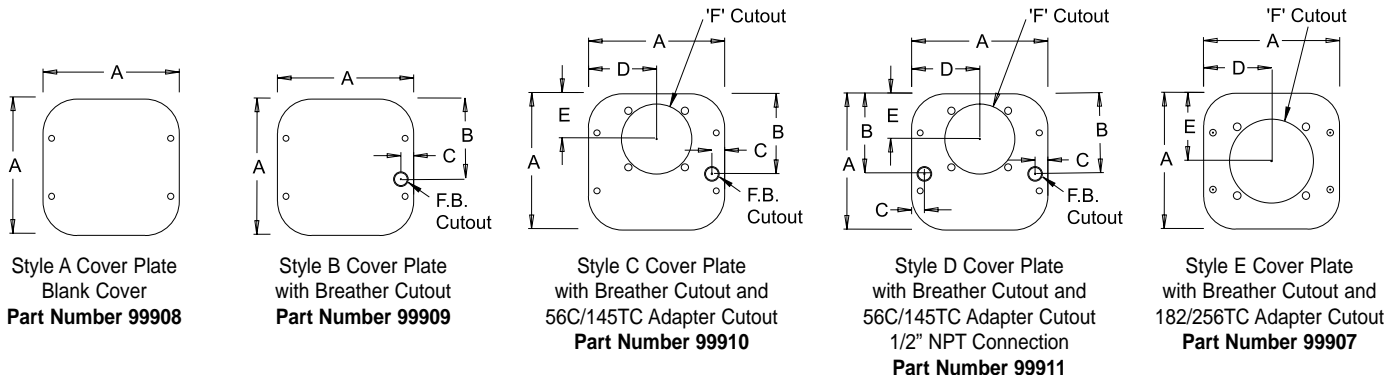
Vescor Vari-Pak Reservoirs allow you to choose the style cover plate for your individual needs.

Reservoir and Cover Plate must be ordered as separate items.

Please use part number when ordering

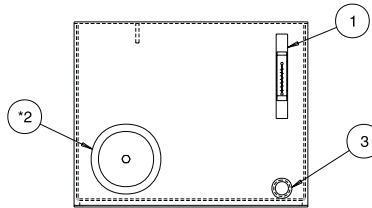
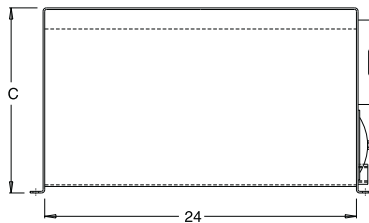
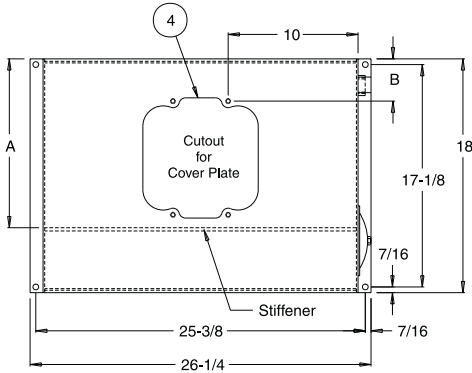
COVER PART NUMBER	A (SQ)	B	C	D	E	F (ADAPTER CUTOUT)
99908 99909* 99910* 99911	10-1/8	5-15/16	1-3/16	5-1/16	3-21/32	cutout for 56/145TC adapter (style 1, 1A, 1B)
99907	10-1/8	N/A	N/A	5-1/16	5-1/16	cutout for 182/256TC adapter only (style 7)

*included (1) PMB07-10 Mini Breather





20 and 25 GALLON CAPACITY



Each Vari-Pak Reservoir Includes:

1. (1) Oil Level & Temp. Gage
- * 2. 6" Cleanout Cover or In-Tank Oil Cooler
*(NOTE: In-Tank Oil cooler is installed in place of 6" cleanout cover)
3. 3/4" NPT Drain
4. Neoprene Gasket for Top Plate Seal
5. Steel Construction with Customer Choice of Top Plate
6. Exterior of reservoir prime painted
7. Interior of reservoir coated with rust preventive oil

Sight Gage

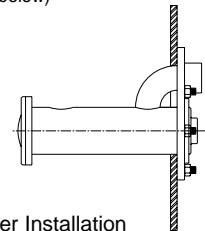
20 to 25 gallon - 5" sight gage (ALG5T)

NOTE: Cover Plate ordered as separate item
(see below)

CAPACITY GALLONS	VESCOR PART NUMBER	TANK DIMENSIONS-INCHES			SHIP WEIGHT
		A	B	C	
20	29920	13"	3-1/4"	14-1/4"	80
25	29925	12-1/4"	3"	18-1/8"	94

ORDERING INFORMATION: VESCOR Vari-Pak Reservoirs can be ordered with installed In-Tank Water Cooler (TMWC0001-*) *Please use Part Number when*

29920 - 001P
 RESERVOIR PART NUMBER 001P = In-Tank Cooler (NPT Connections)
 001S = In-Tank Cooler (SAE Connections)
 001M = In-Tank Cooler (Metric Connections)
 OMIT - No In-Tank Cooler (6" Cleanout Cover)



Typical In-Tank Oil Cooler Installation

COVER PLATES

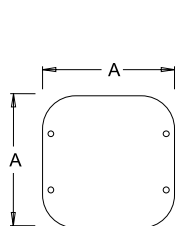
Vescor Vari-Pak Reservoirs allow you to choose the style cover plate for your individual needs.

Reservoir and Cover Plate must be ordered as separate items.

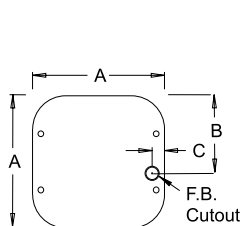
Please use part number when ordering

COVER PART NUMBER	A (SQ)	B	C	D	E	F (ADAPTER CUTOUT)
99908 99909* 99910* 99911*	10-1/8	5-15/16	1-3/16	5-1/16	3-21/32	cutout for 56/145TC adapter (style 1, 1A, 1B)
99907		N/A	N/A		5-1/16	cutout for 182/256TC adapter only (style 7)

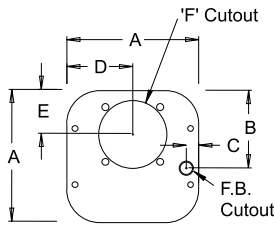
*includes (1) PMB07-10 Mini Breather



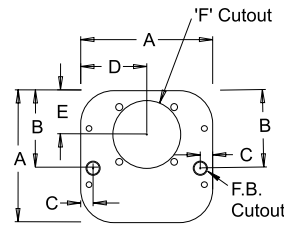
Style A Cover Plate
Blank Cover
Part Number 99908



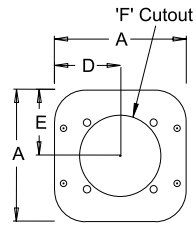
Style B Cover Plate
with Breather Cutout
Part Number 99909



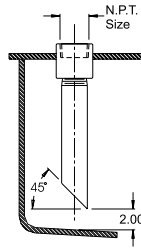
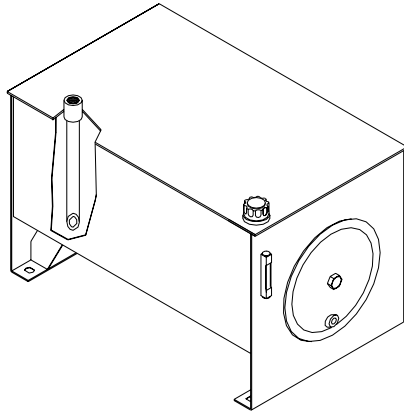
Style C Cover Plate
with Breather Cutout and
56C/145TC Adapter Cutout
Part Number 99910



Style D Cover Plate
with Breather Cutout and
56C/145TC Adapter Cutout
1/2" NPT Connection
Part Number 99911



Style E Cover Plate
with Breather Cutout and
182/256TC Adapter Cutout
Part Number 99907

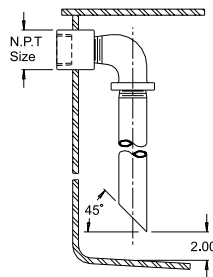
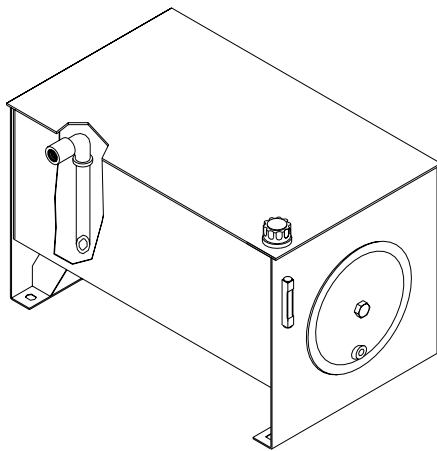


VESCOR® BASIC TOP MOUNT

Benefits:

- Customer specified locations
- Customer specified sizes
- No cutting of holes to install couplings
- Low cost
- Rapid assembly of power unit

RETURN LINES AVAILABLE WITH SCHEDULE 40 PIPE								
RESERVOIR SIZE (GALS)	1/2" NPT #8 SAE	3/4" NPT #10 SAE	1" NPT #12 SAE	1-1/4" NPT #14 SAE	1-1/2" NPT #16 SAE	2" NPT #20 SAE	2-1/2" NPT #24 SAE	3" NPT #32 SAE
10 to 20	•	•	•					
30 to 40	•	•	•	•				
50 to 60	•	•	•	•	•			
80 to 100		•	•	•	•	•		
120 to 150			•	•	•	•	•	
200 and up			•	•	•	•	•	•



VESCOR® BASIC SIDE MOUNT

Benefits:

- Customer specified locations
- Customer specified sizes
- No cutting of holes to install couplings
- Low cost
- Rapid assembly of power unit

RETURN LINES AVAILABLE WITH SCHEDULE 40 PIPE								
RESERVOIR SIZE (GALS)	1/2" NPT #8 SAE	3/4" NPT #10 SAE	1" NPT #12 SAE	1-1/4" NPT #14 SAE	1-1/2" NPT #16 SAE	2" NPT #20 SAE	2-1/2" NPT #24 SAE	3" NPT #32 SAE
10 to 20	•	•	•					
30 to 40	•	•	•	•				
50 to 60	•	•	•	•	•			
80 to 100		•	•	•	•	•		
120 to 150			•	•	•	•	•	
200 and up			•	•	•	•	•	•

